

# EPIDEMIOLOGICAL SITUATION COVID-19, Nepal



Ministry of Health & Population  
Department of Health Services  
**Epidemiology & Disease Control Division (EDCD)**  
Teku, Kathmandu

# EPIDEMIOLOGICAL SITUATION COVID-19, Nepal

**04 Jun 2020 T07:00:00**

## Overview: Week 23 (10 May till 03 Jun 2020)

- Total confirmed Covid-19 Cases : 2259; Death: 9
- Total district affected: 65/77
- Total province affected: All seven provinces
- Number of province/district with cases from wk 20 to wk 23: 7 provinces/64 districts
- Number of confirmed cases from wk 20 to wk 23: 2149 (95% of total confirmed cases)
- Number of deaths from wk 20 to wk 23 : 9 (all death)
- Core epidemiological variables under process for some cases.
- Cases with missing address is assigned to province of testing lab- will be changed once information is available.

# Summary of laboratory-confirmed COVID-19 cases, deaths and transmission by province

Transmission classification based on [WHO definitions](#)

Reporting Province	Total confirmed cumulative cases	Total cumulative deaths	Transmission classification*	District affected (total districts)	Date of most recent case#
Province 1	185	-	Cluster of cases	12 (14)	03-Jun-2020
Province 2	866	1	Cluster of cases	8 (8)	03-Jun-2020
Bagmati	58	3	Sporadic cases	12 (13)	03-Jun-2020
Gandaki	37	-	Sporadic cases	7 (11)	02-Jun-2020
Province 5	802	3	Cluster of cases	12 (12)	03-Jun-2020
Karnali	244	1	Cluster of cases	5 (10)	03-Jun-2020
Sudurpaschhim	67	1	Sporadic cases	9 (9)	03-Jun-2020
<b>National Total</b>	<b>2259</b>	<b>9</b>		<b>65 (77)</b>	<b>03-Jun-2020</b>

# - Date of last case is the date of onset or date of sample collection or date of lab report based on information available.

\*Case classification is based on [WHO transmission classification](#)

**No cases-** provinces with no cases

**Sporadic cases-** provinces with one or more cases, imported or locally detected

**Cluster of cases-** provinces experiencing cases, clustered in time, geographic location and/or by common exposures

**Community transmission-** experiencing larger outbreaks of local transmission defined through an assessment of factors including, but not limited to:

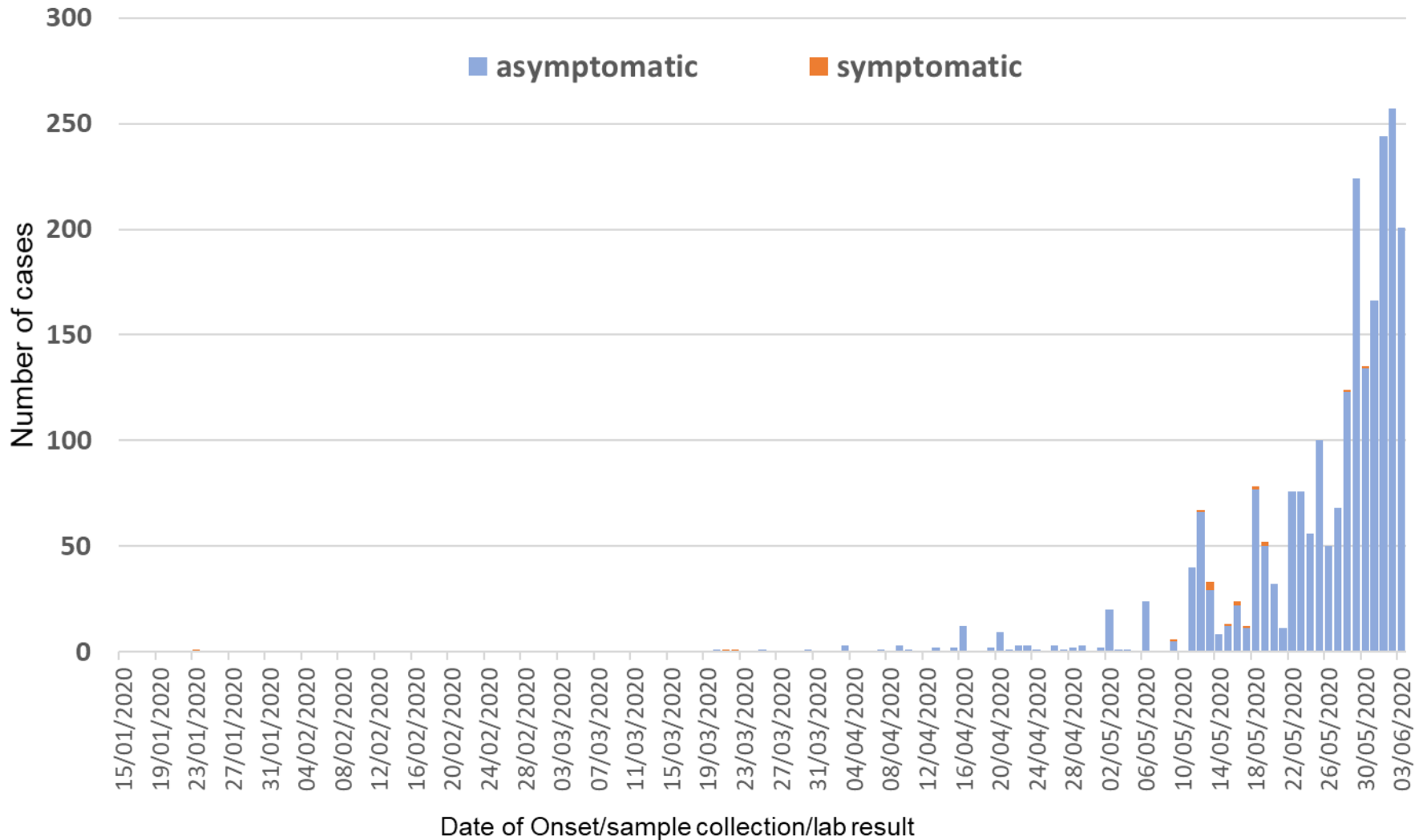
- Large numbers of cases not linkable to transmission chains
- Large numbers of cases from sentinel lab surveillance
- Multiple unrelated clusters in several areas of the country/territory/area

• All data are provisional

• Data updated till 04 Jun 2020 Time 07:00:00

# Time distribution

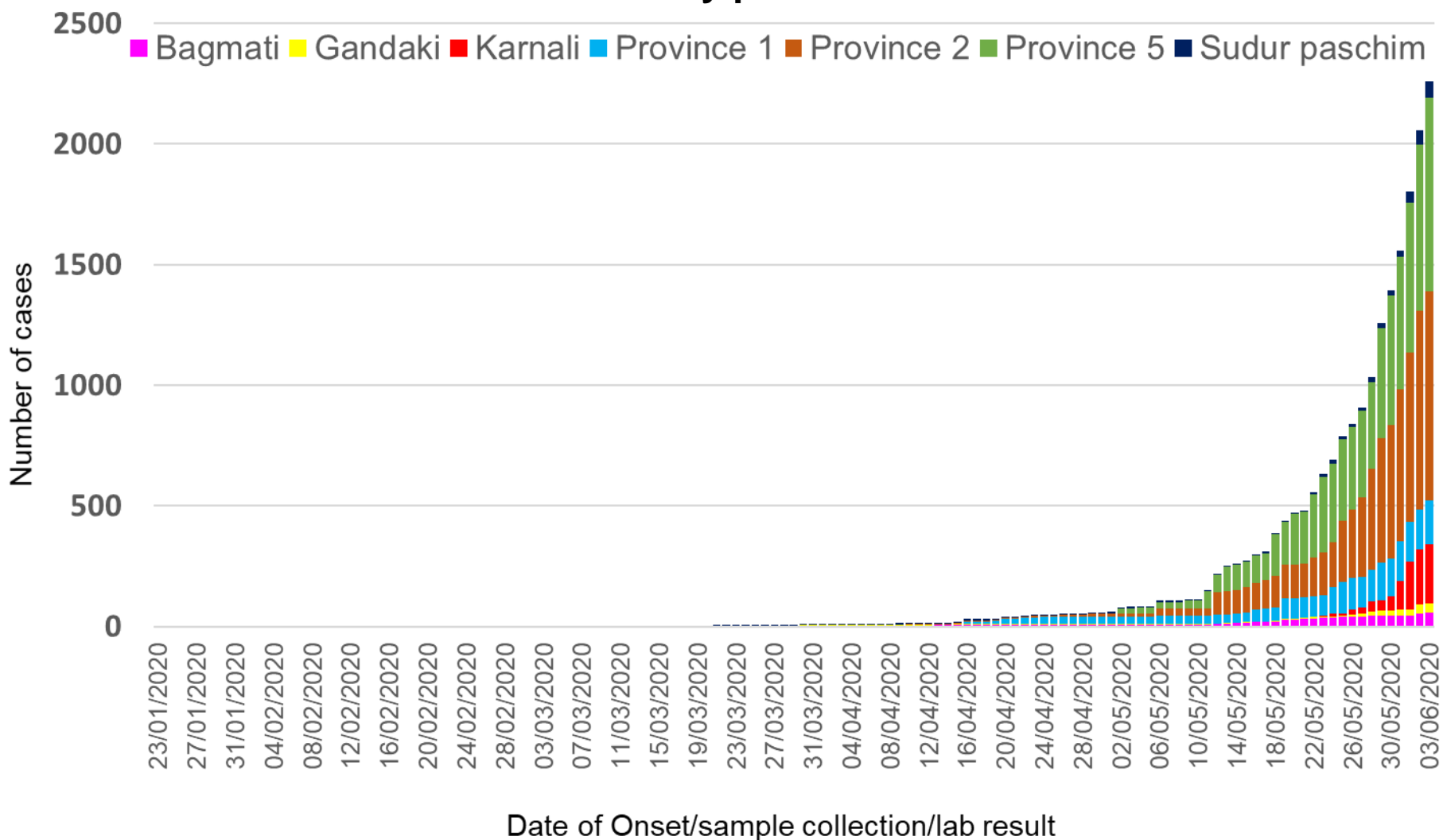
# Epidemic curve of laboratory confirmed COVID-19 cases, by date of onset/sample/confirmation (N=2259)



**Note:** The first case was developed symptoms on 31 Dec 1919 in China and was confirmed on 23 Jan 2020. Reference dates used in order of preference as available – Date onset/Date of sample collection/Date of confirmation. Clinical information presented here is collected on the day of sample collection.

- All data are provisional
- Data updated till 04 Jun 2020 Time 07:00:00

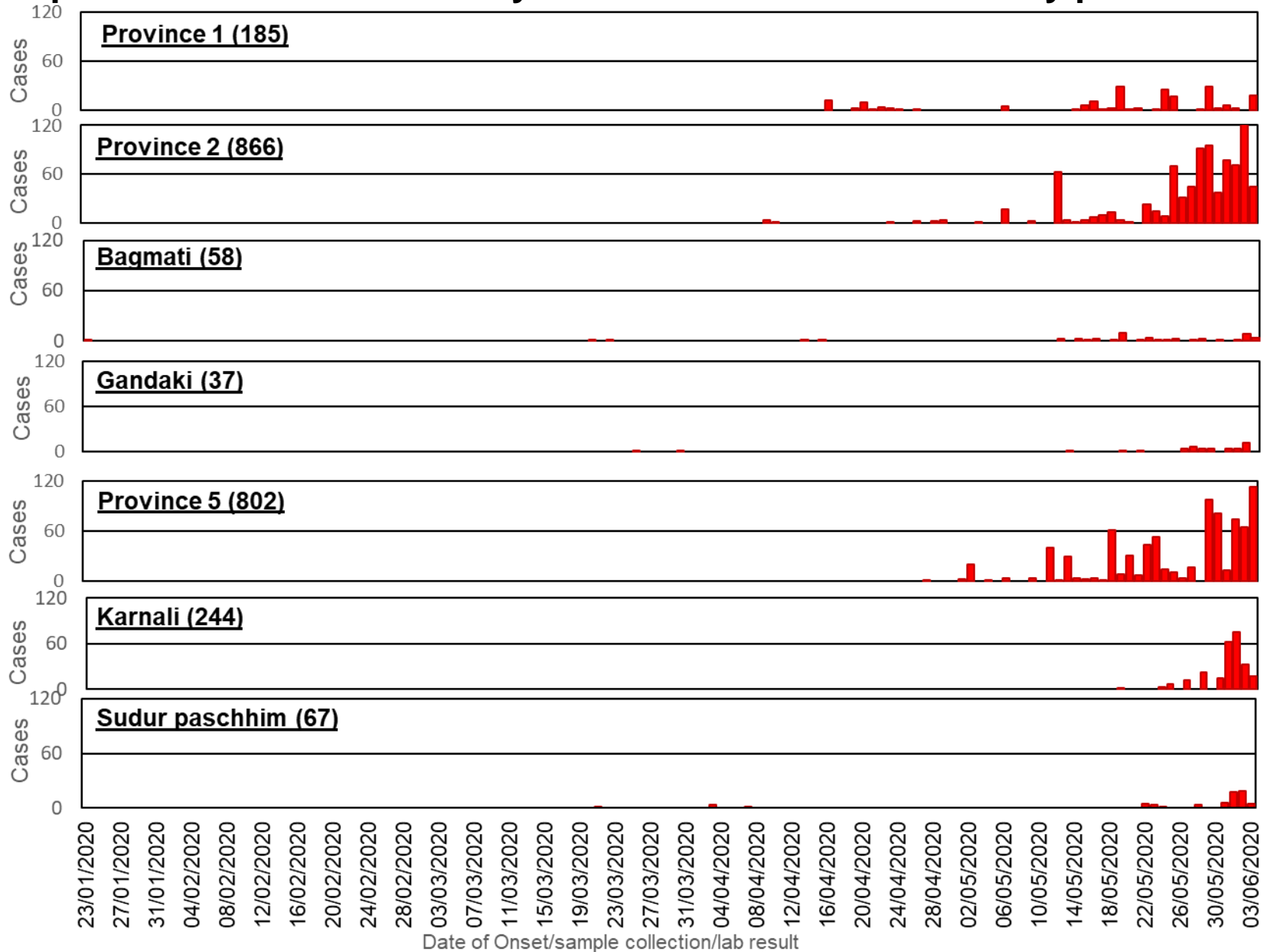
## Cumulative case count of laboratory confirmed COVID-19 cases by province



**Note:** The first case was developed symptoms on 31 Dec 2019 in China and was confirmed on 23 Jan 2020. Reference dates used in order of preference as available – Date onset/Date of sample collection/Date of confirmation.

- All data are provisional
- Data updated till 04 Jun 2020 Time 07:00:00

# Epidemic curve of laboratory confirmed COVID-19 cases by province



- All data are provisional
- Data updated till 04 Jun 2020 Time 07:00:00

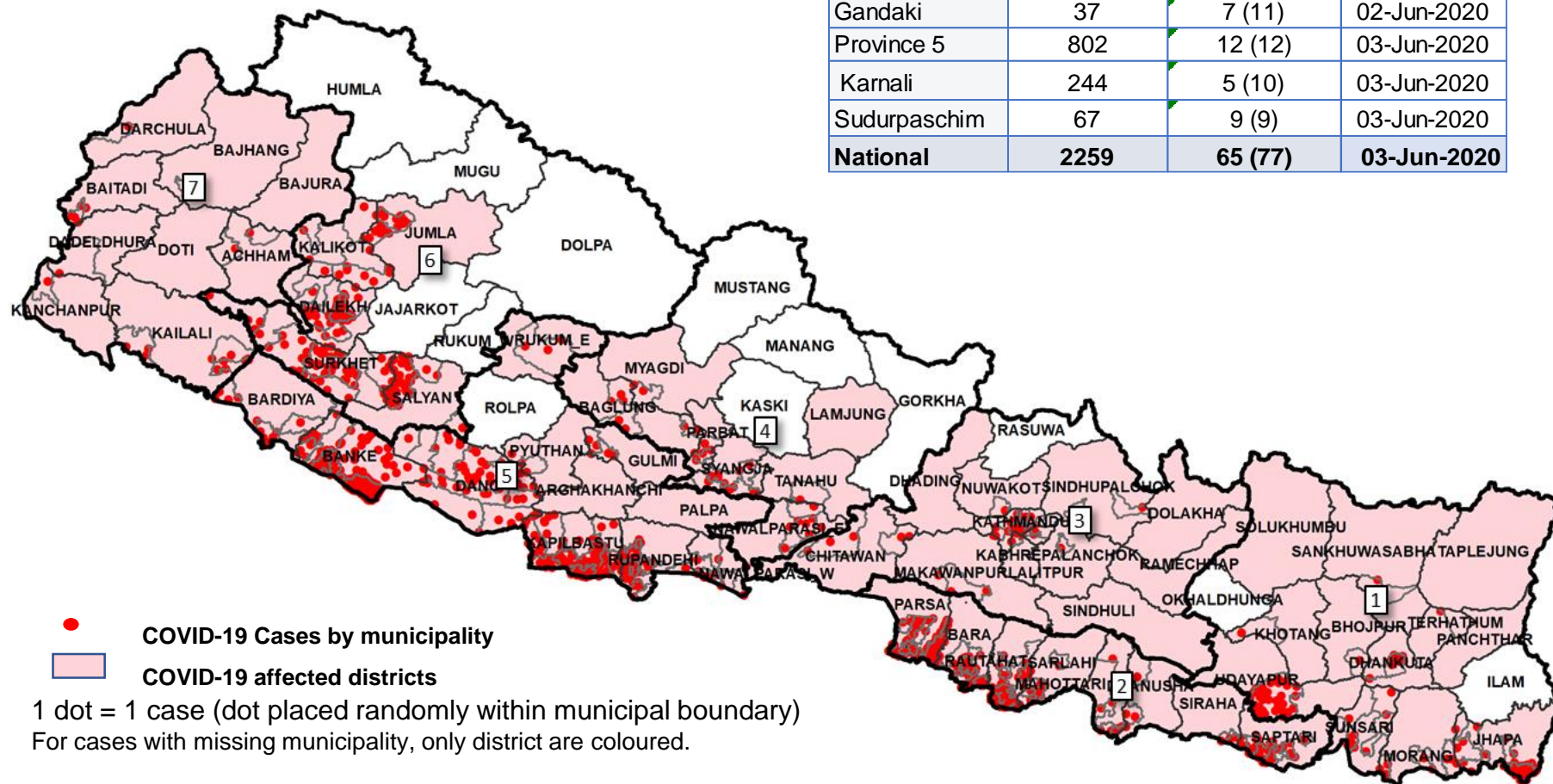
**Note:** The first case was contracted infection in December when he was in China.



# Place distribution

# Municipalities (By domicile) with reported laboratory confirmed COVID-19 cases

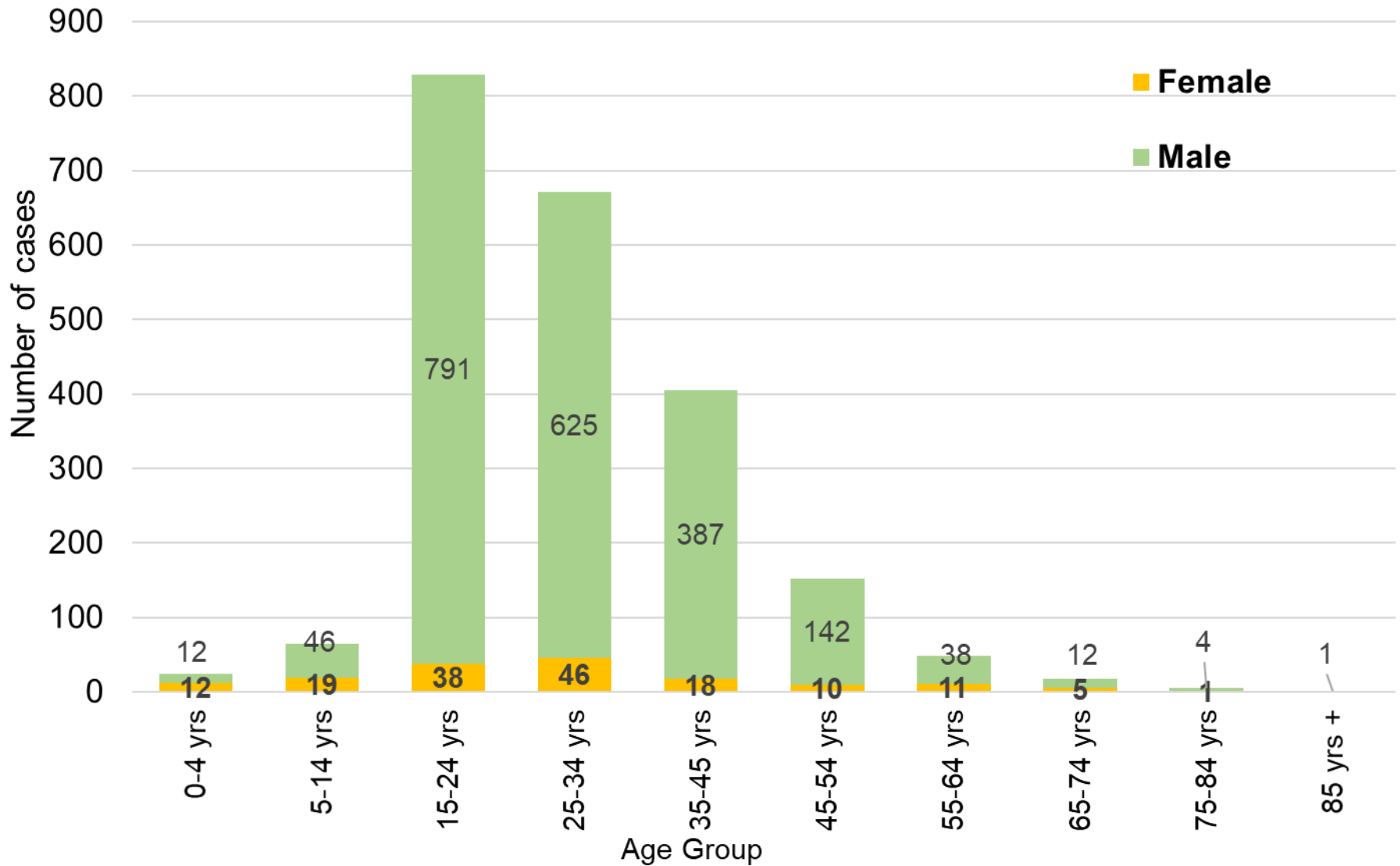
Province	Total confirmed cases	District affected (total districts)	Date of last case
Province 1	185	12 (14)	03-Jun-2020
Province 2	866	8 (8)	03-Jun-2020
Bagmati	58	12 (13)	03-Jun-2020
Gandaki	37	7 (11)	02-Jun-2020
Province 5	802	12 (12)	03-Jun-2020
Karnali	244	5 (10)	03-Jun-2020
Sudurpaschim	67	9 (9)	03-Jun-2020
<b>National</b>	<b>2259</b>	<b>65 (77)</b>	<b>03-Jun-2020</b>



- All data are provisional
- Data updated till 04 Jun 2020 Time 07:00:00

# Person distribution

# Distribution of COVID-19 cases by age and sex (N=2218)



Detail for 41 cases are yet to arrive.

- All data are provisional
- Data updated till 04 Jun 2020 Time 07:00:00

# Distribution of COVID-19 cases by age and sex by province (N=2232)

Percentage of male among total confirmed cases = 93% (2069/2232)

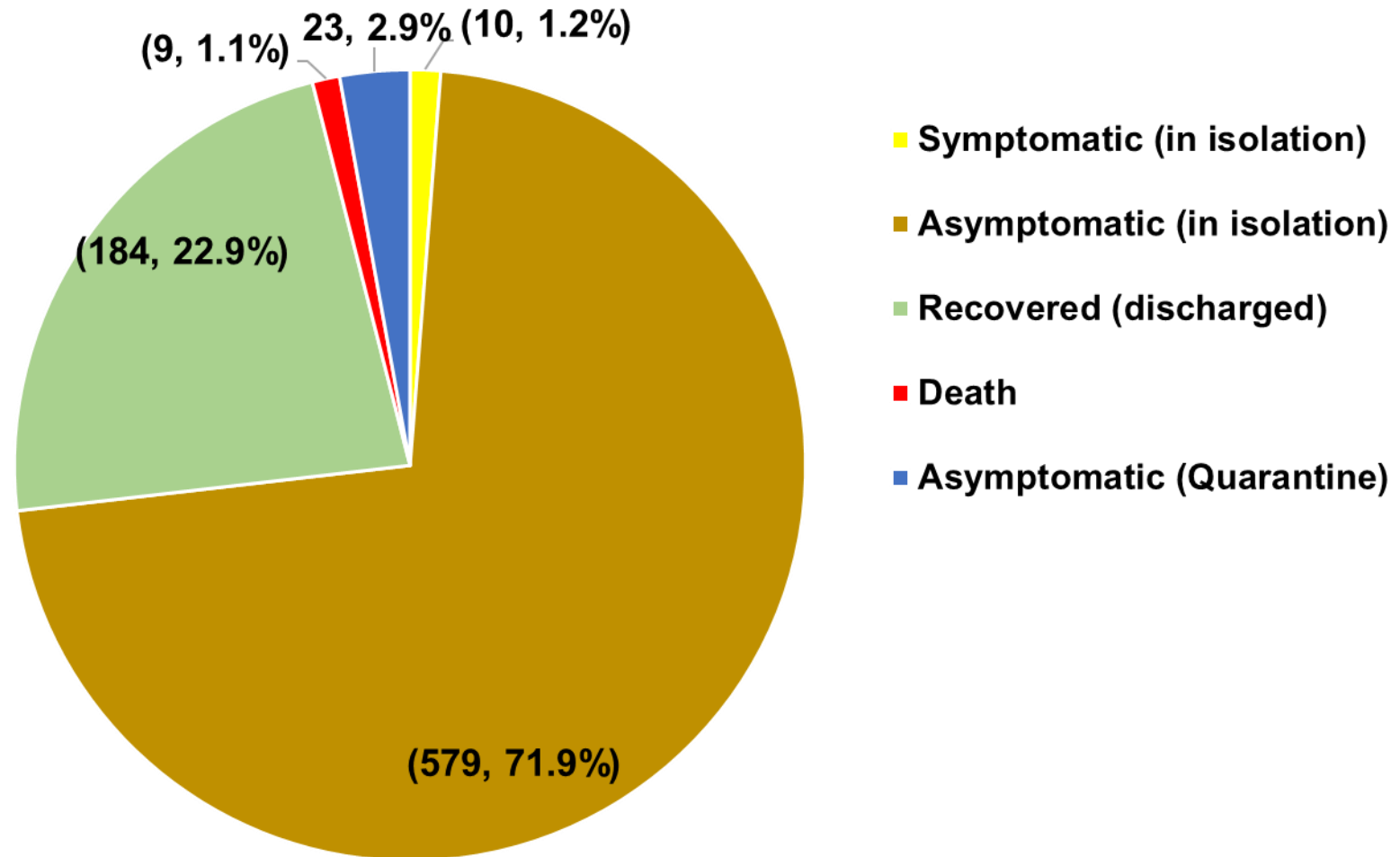
Percentage of male in 15-54 year among confirmed male cases = 94% (1945/2069)

Province	Sex	Age Group											Total
		0-4 yrs	5-14 yrs	15-24 yrs	25-34 yrs	35-45 yrs	45-54 yrs	55-64 yrs	65-74 yrs	75-84 yrs	85+ yrs	Unknown	
Province 1	Female	0	0	3	2	3	3	1	1	0	0	0	13
	Male	0	0	80	49	22	10	7	1	0	0	2	171
	Total	0	0	83	51	25	13	8	2	0	0	3	184
Province 2	Female	4	7	10	11	5	5	3	0	0	0	2	47
	Male	6	31	286	244	162	65	13	8	1	1	1	818
	Total	10	38	296	255	167	70	16	8	1	1	4	885
Bagmati	Female	0	0	6	11	2	0	2	1	1	0	0	23
	Male	0	2	4	11	10	3	2	2	1	0	0	35
	Total	0	2	10	22	12	3	4	3	2	0	0	58
Gandaki	Female	0	0	1	0	1	0	0	1	0	0	0	3
	Male	1	1	17	9	4	2	0	0	0	0	0	34
	Total	1	1	18	9	5	2	0	1	0	0	0	37
Province 5	Female	5	10	13	16	7	2	4	1	0	0	0	58
	Male	1	6	276	237	149	48	10	1	2	0	7	737
	Total	6	16	289	253	156	50	14	2	2	0	14	795
Karnali	Female	2	2	3	5	0	0	1	0	0	0	1	14
	Male	4	6	114	56	35	10	4	0	0	0	1	230
	Total	6	8	117	61	35	10	5	0	0	0	2	244
Sudurpaschim	Female	1	0	2	1	0	0	0	1	0	0	0	5
	Male	0	0	14	19	5	4	2	0	0	0	0	44
	Total	1	0	16	20	5	4	2	1	0	0	18	49
National	Female	12	19	38	46	18	10	11	5	1	0	3	163
	Male	12	46	791	625	387	142	38	12	4	1	11	2069
	Total	24	65	829	671	405	152	49	17	5	1	41	2232

- All data are provisional
- Data updated till 04 Jun 2020 Time 07:00:00

Detail for 27 cases are yet to arrive.

## Outcome status of COVID-19 cases in Nepal (N=805)



Current clinical status of 1454 cases are under investigation.

- All data are provisional
- Data updated till 04 Jun 2020 Time 07:00:00