

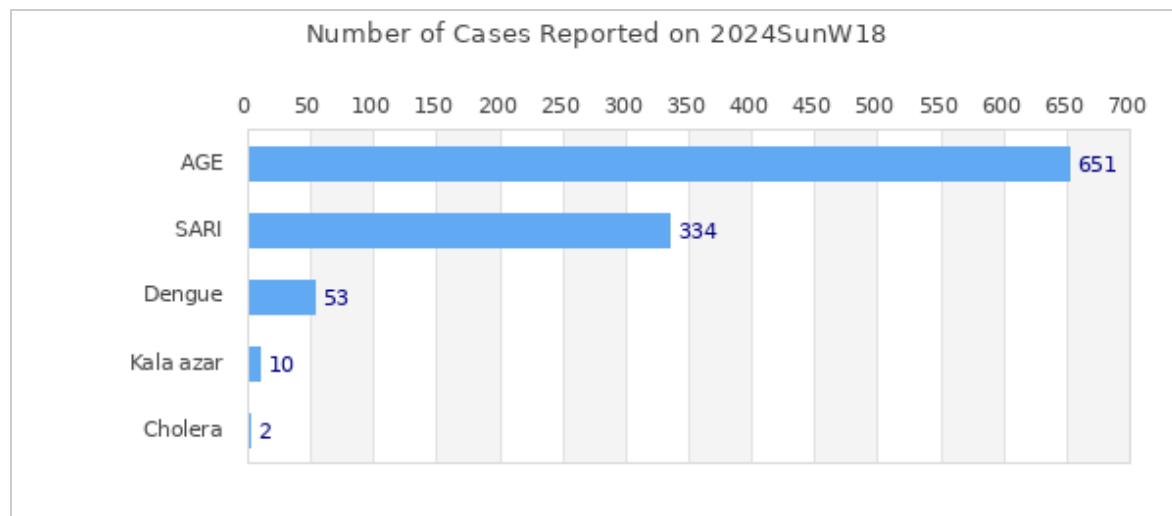


Highlights

Among the reported diseases, **AGE** is the leading cause of morbidity in Week 18 with **651** reported cases.

Overall reporting rate of Week 18 is **94.1%** with 111 out of 118 sentinel sites reporting to EWARS.

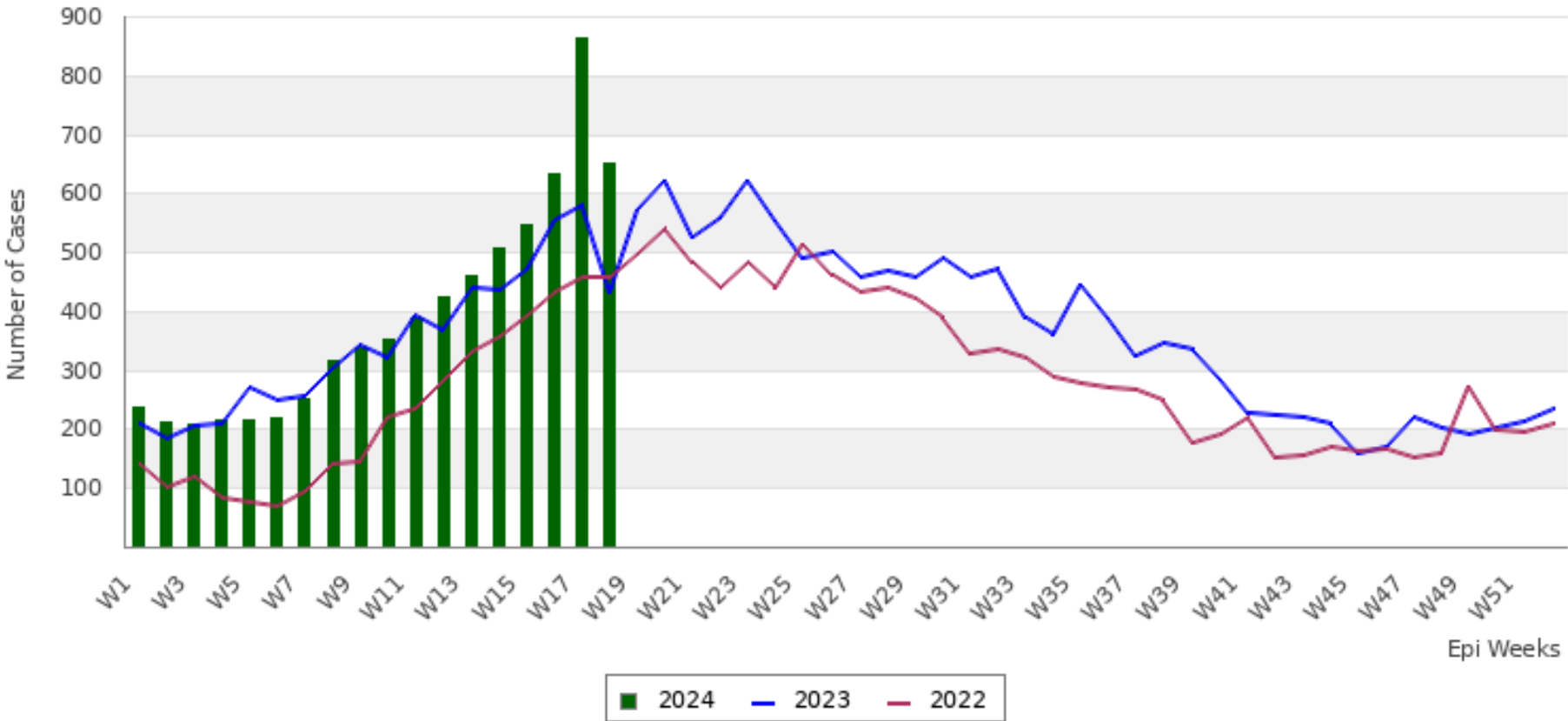
1003559 cases of Corona Virus Disease (COVID-19) have been confirmed in Nepal, of which 991509 cases have been recovered so far.

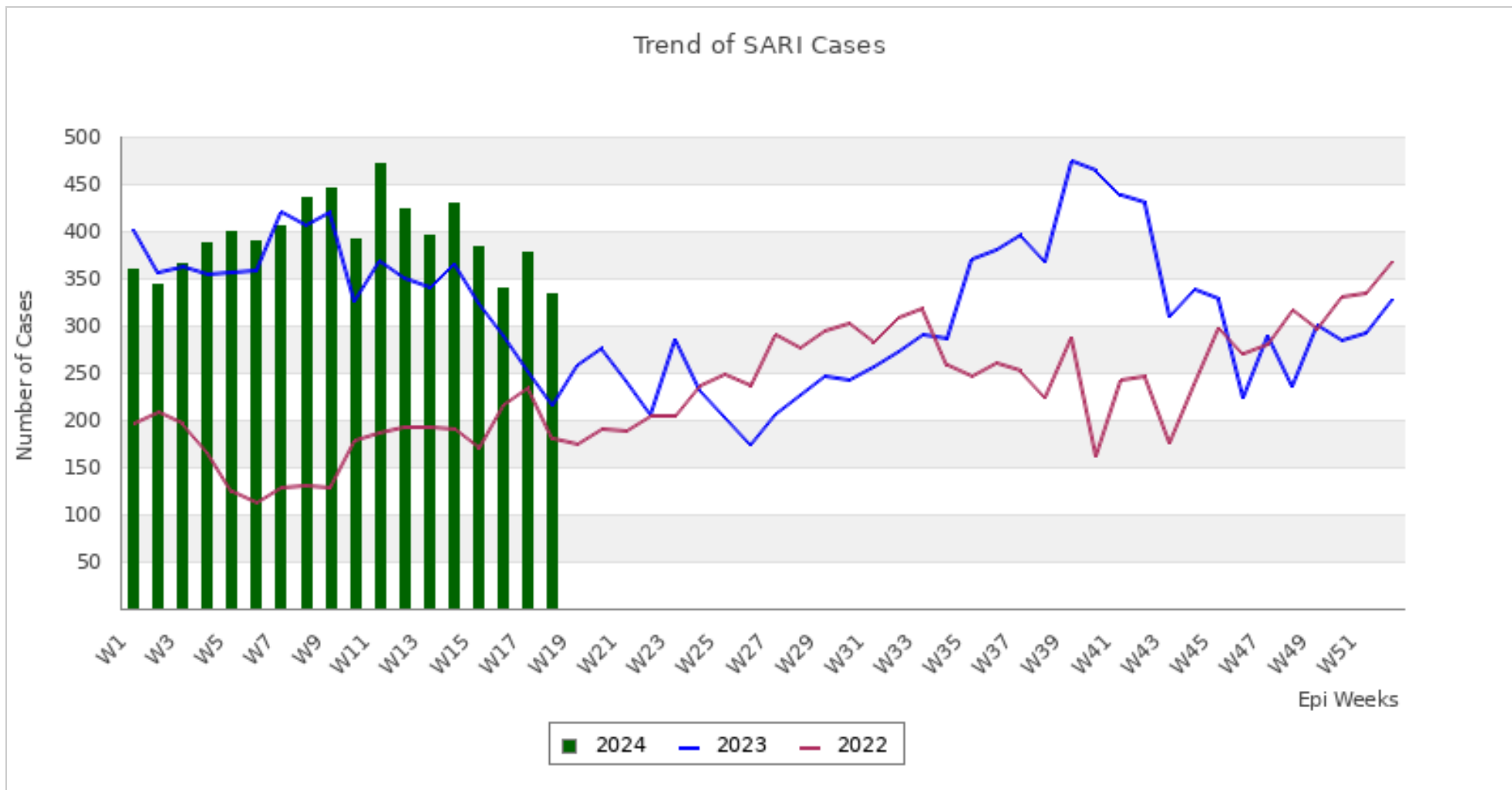


This bulletin includes data since January 2022 till date, including comparison of the same period last two year. Since, May 2019, 36 new sentinel sites (including public hospitals, private hospitals, and medical colleges) were added and was gradually oriented and started reporting, thus increasing the number of reporting sites. The current number of sentinel sites is 118.

Trend of Outbreak Prone Diseases/Syndromes

Trend of AGE Cases





Comparative Analysis by Disease/Syndrome (Week 18, 2024)

Disease	Week 17, 2024 (Previous Week)	Week 18, 2024 (This Week)	Change in No. of Cases	Week 18, 2023 (Last Year Same Week)
AGE	865	651	-214 ■	432
SARI	378	334	-44 ■	216
Cholera	0	2	2 ■	0
Malaria Vivax	5	0	-5 ■	0
Malaria Falciparum	3	0	-3 ■	1
Dengue	50	53	3 ■	33

Kala azar	4	10	6	■	2
Scrub Typhus	63	71	8	■	41
Enteric Fever	37	38	1	■	36
Influenza Like Illness	75	93	18	■	27

■ Increase in number of cases

■ Decrease in number of cases

■ No change in number of cases

Summary Observation

Most of the **AGE** cases were reported from PARSA (51 cases), KAPILBASTU (46 cases), KATHMANDU (45 cases), KAILALI (35 cases) and RUPANDEHI (33 cases).

Most of the **SARI** cases were reported from KATHMANDU (74 cases), MORANG (17 cases), BAJURA (15 cases), KASKI (15 cases) and LALITPUR (11 cases).

Most of the **Dengue** cases were reported from KATHMANDU (10 cases), TANAHU (8 cases), JHAPA (4 cases), ACHHAM (3 cases) and BANKE (3 cases).

Most of the **Kala azar** cases were reported from KATHMANDU (4 cases), DOTI (1 cases), KALIKOT (1 cases), HUMLA (1 cases) and PALPA (1 cases).

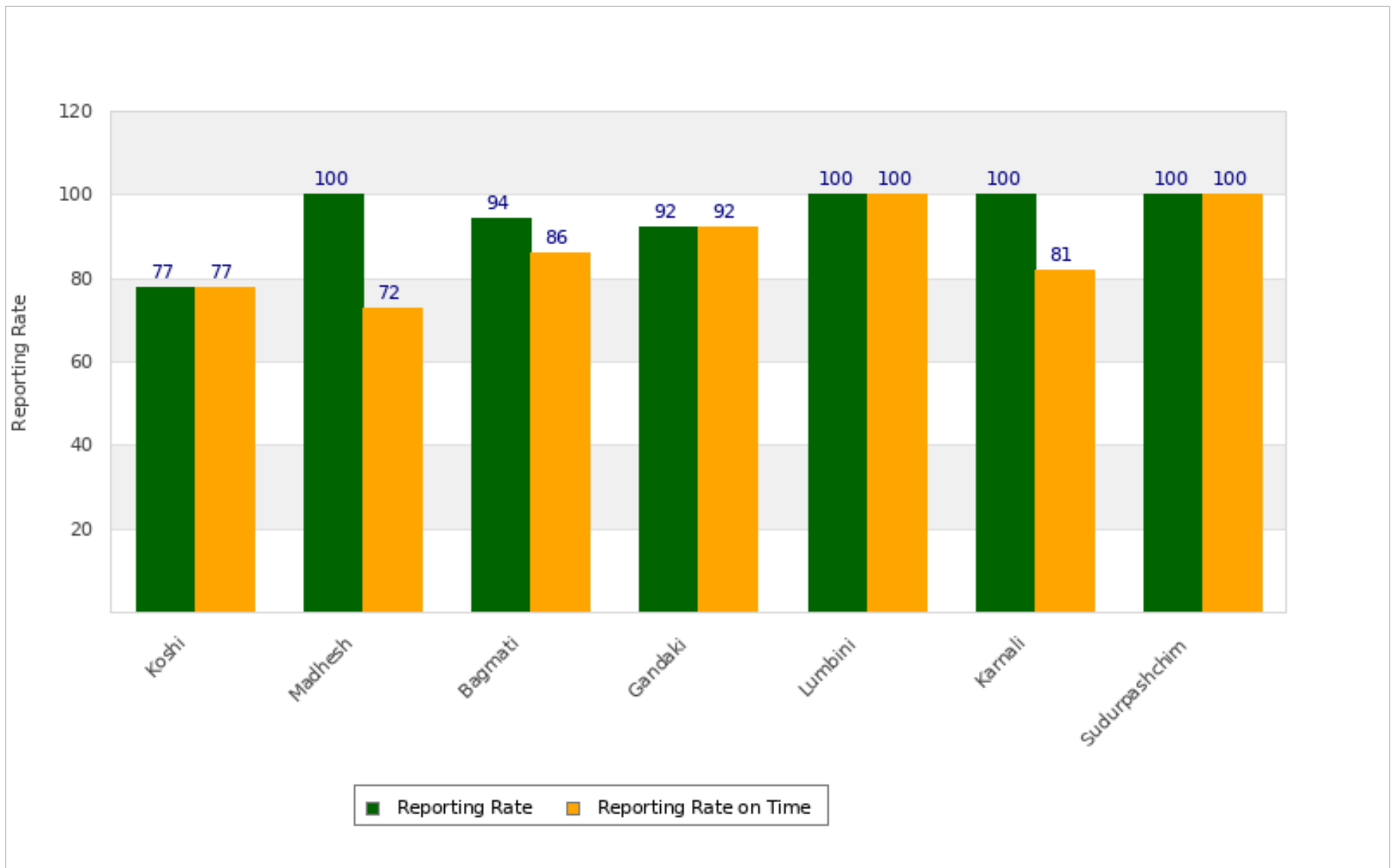
Cholera cases were reported from DOLAKHA (1 cases) and RAUTAHAT (1 cases).

Most of the **Scrub Typhus** cases were reported from SURKHET (10 cases), MAKWANPUR (6 cases), DARCHULA (5 cases), ROLPA (5 cases) and SYANGJA (4 cases).

Most of the **Enteric Fever** cases were reported from DADEL DHURA (6 cases), BAITADI (5 cases), DARCHULA (5 cases), SUNSARI (4 cases) and JHAPA (2 cases).

Most of the **Influenza Like Illness** cases were reported from ACHHAM (37 cases), SINDHUPALCHOK (18 cases), BAJURA (8 cases), RASUWA (7 cases) and BAJHANG (5 cases).

Province Reporting Status (Week 18, 2024)



Acknowledgement: The Epidemiology and Disease Control Division (EDCD) highly acknowledges the contribution from all the sentinel sites, medical recorders, EWARS focal persons, rapid response team members and technical support from WHO and GIZ for preparation of this bulletin.

Note: *This bulletin is also available at the EDCD website. Other information can also be accessed at the website www.edcd.gov.np. If you have difficulty reading this bulletin, you can access it [online](#).*