

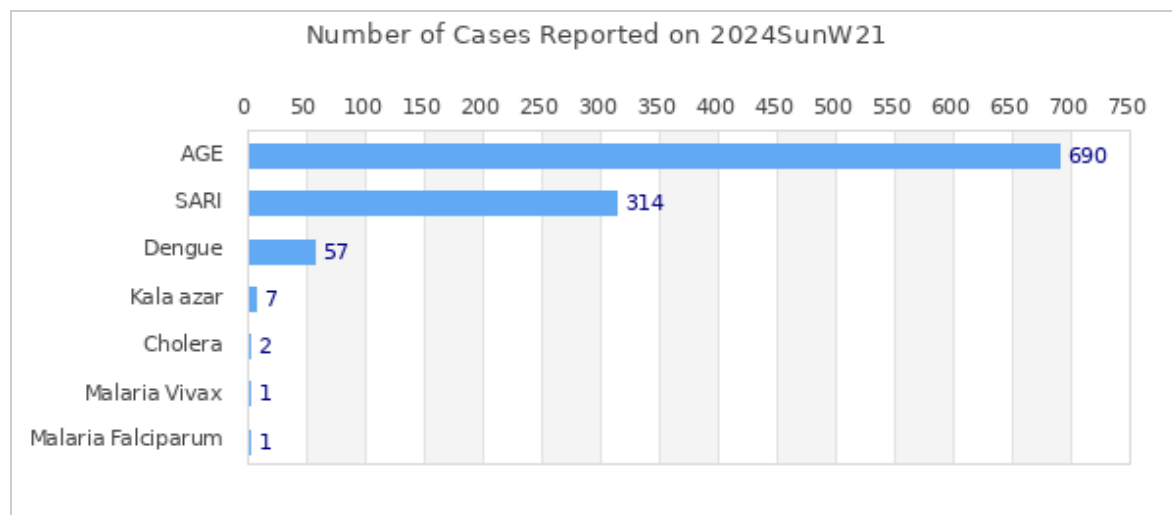


Highlights

Among the reported diseases, **AGE** is the leading cause of morbidity in Week 21 with **690** reported cases.

Overall reporting rate of Week 21 is **92.4%** with 109 out of 118 sentinel sites reporting to EWARS.

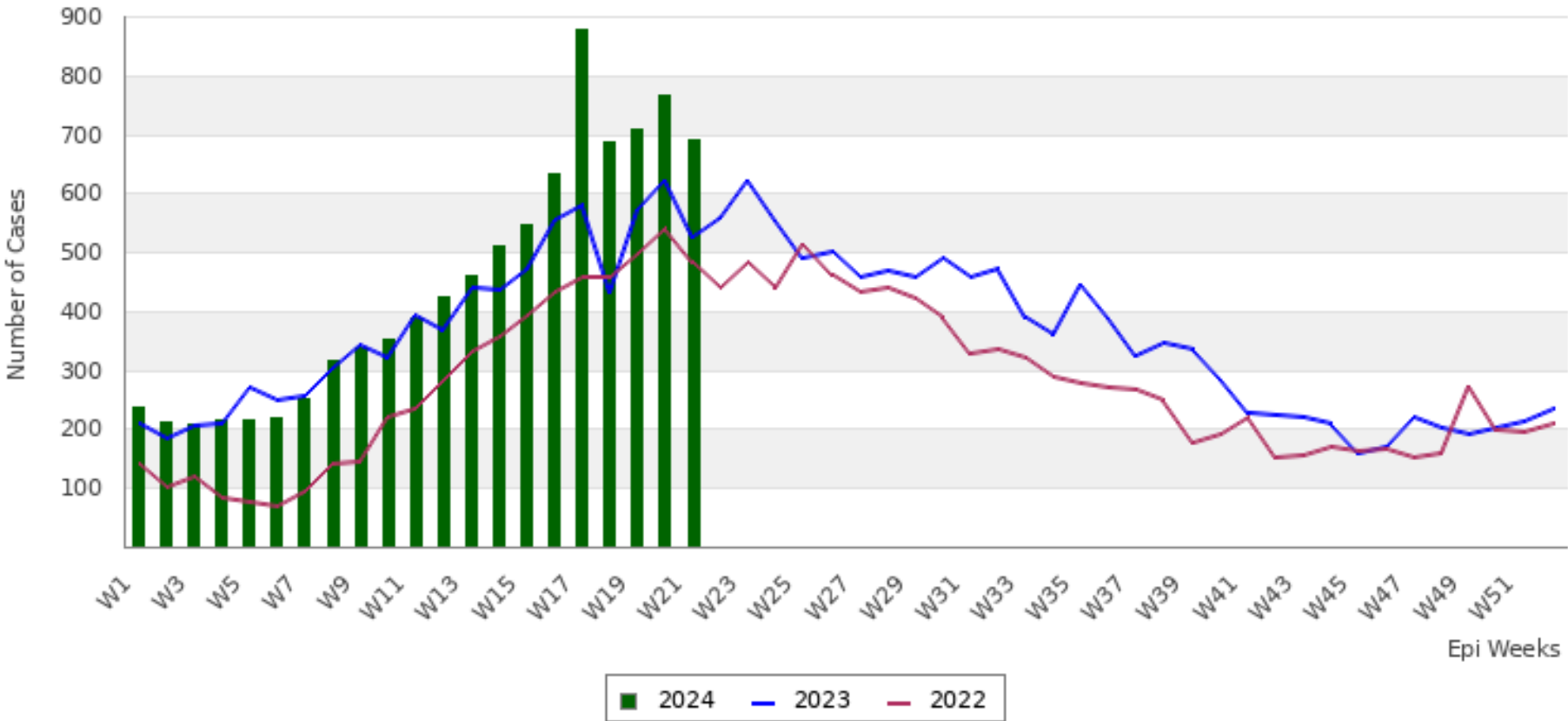
â€¢ 1003570 cases of Corona Virus disease (COVID-19) have been confirmed in Nepal, of which 991509 cases have been recovered so far. â€¢ Of the reported cases, AGE is the leading cause of morbidity in week 21.

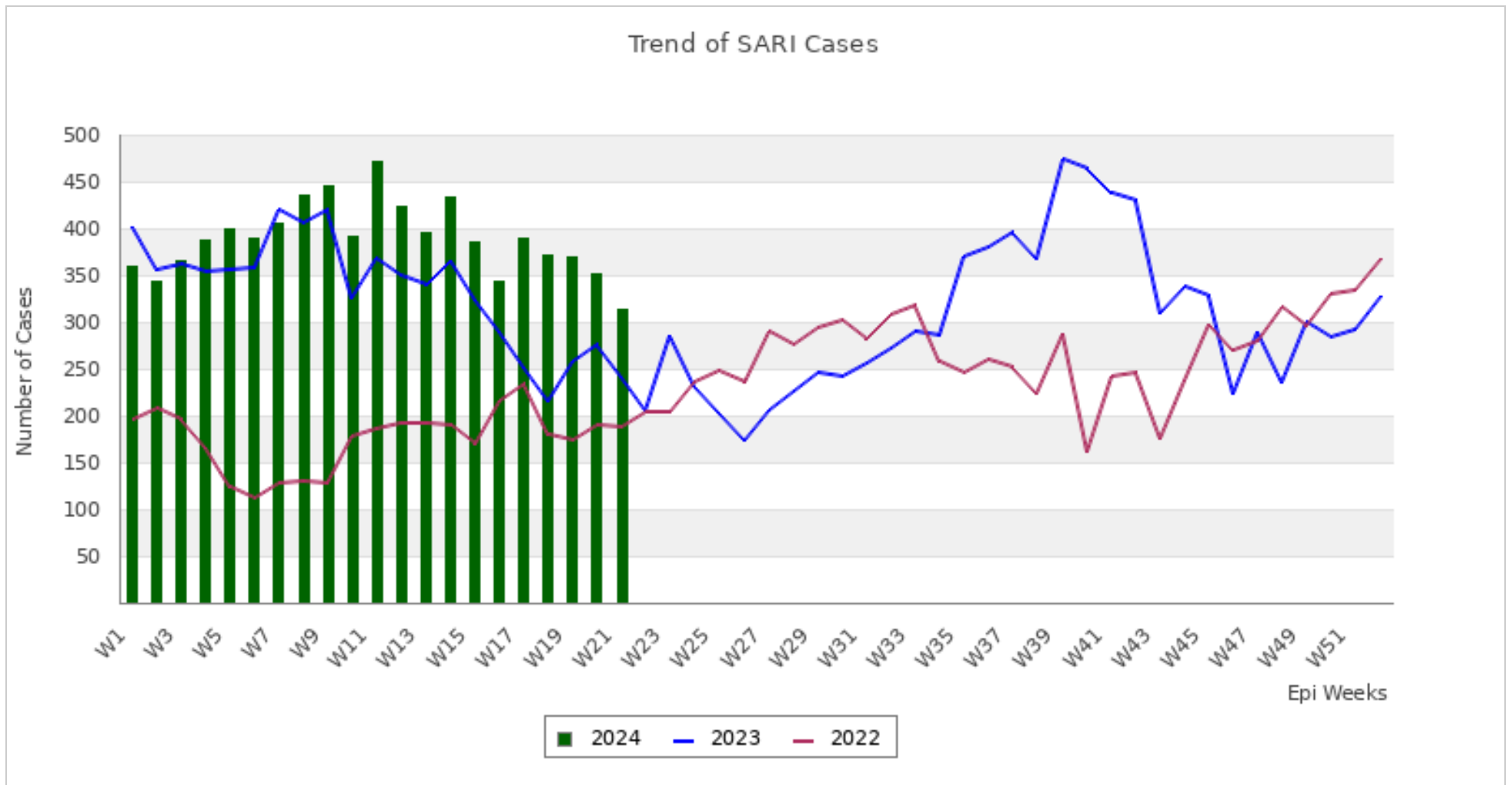


This bulletin includes data since January 2022 till date, including comparison of the same period last two year. Since, May 2019, 36 new sentinel sites (including public hospitals, private hospitals, and medical colleges) were added and was gradually oriented and started reporting, thus increasing the number of reporting sites. The current number of sentinel sites is 118.

Trend of Outbreak Prone Diseases/Syndromes

Trend of AGE Cases





Comparative Analysis by Disease/Syndrome (Week 21, 2024)

Disease	Week 20, 2024 (Previous Week)	Week 21, 2024 (This Week)	Change in No. of Cases	Week 21, 2023 (Last Year Same Week)
AGE	768	690	-78 ■	525
SARI	351	314	-37 ■	242
Cholera	1	2	1 ■	1
Malaria Vivax	1	1	0 ■	2
Malaria Falciparum	1	1	0 ■	0
Dengue	54	57	3 ■	50

Kala azar	10	7	-3	■	4
Scrub Typhus	78	63	-15	■	27
Enteric Fever	51	40	-11	■	69
Influenza Like Illness	100	96	-4	■	30

■ Increase in number of cases

■ Decrease in number of cases

■ No change in number of cases

Summary Observation

Most of the **AGE** cases were reported from KATHMANDU (69 cases), PARSA (50 cases), KAPILBASTU (38 cases), RUPANDEHI (36 cases) and LALITPUR (26 cases).

Most of the **SARI** cases were reported from KATHMANDU (30 cases), RUPANDEHI (24 cases), MORANG (21 cases), KAILALI (15 cases) and BAJURA (14 cases).

Most of the **Dengue** cases were reported from JHAPA (11 cases), TANAHU (5 cases), MAKWANPUR (5 cases), KAVREPALANCHOK (4 cases) and CHITAWAN (3 cases).

Malaria Vivax case(s) were reported from ACHHAM (1 case).

Malaria Falciparum case(s) were reported from RAMECHHAP (1 case).

Most of the **Kala azar** cases were reported from KATHMANDU (3 cases), ARGHAKHANCHI (1 case), LALITPUR (1 case), PARSA (1 case) and MAHOTTARI (1 case).

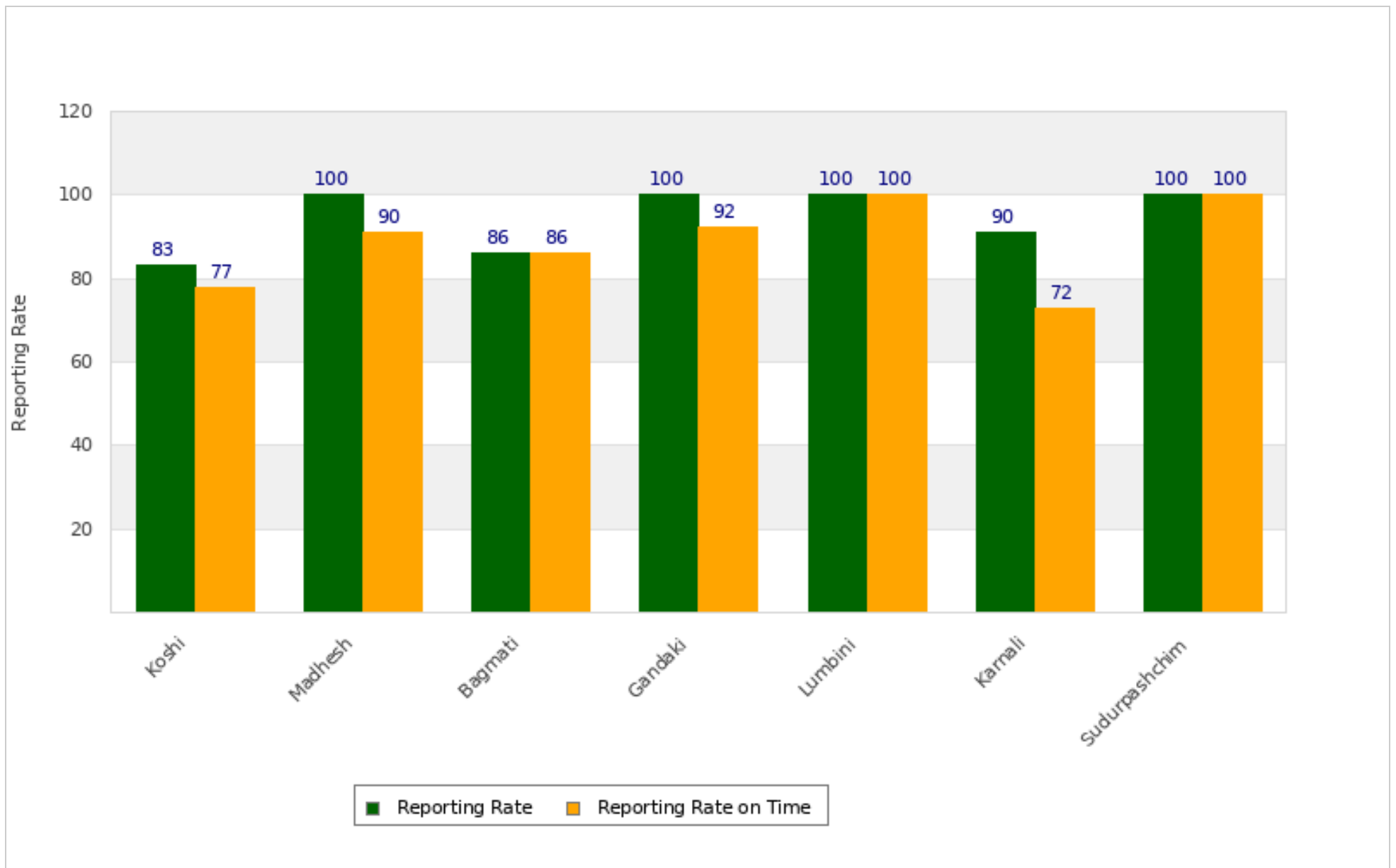
Cholera case(s) were reported from MAKWANPUR (1 case) and RAUTAHAT (1 case).

Most of the **Scrub Typhus** cases were reported from LAMJUNG (7 cases), DARCHULA (7 cases), ACHHAM (4 cases), CHITAWAN (4 cases) and OKHALDHUNGA (4 cases).

Most of the **Enteric Fever** cases were reported from DADEL DHURA (6 cases), BAITADI (5 cases), OKHALDHUNGA (5 cases), DARCHULA (3 cases) and SINDHUPALCHOK (2 cases).

Most of the **Influenza Like Illness** cases were reported from ACHHAM (30 cases), SINDHUPALCHOK (21 cases), RASUWA (17 cases), BAJURA (6 cases) and BAITADI (5 cases).

Province Reporting Status (Week 21, 2024)



Acknowledgement: The Epidemiology and Disease Control Division (EDCD) highly acknowledges the contribution from all the sentinel sites, medical recorders, EWARS focal persons, rapid response team members and technical support from WHO and GIZ for preparation of this bulletin.

Note: This bulletin is also available at the EDCD website. Other information can also be accessed at the website www.edcd.gov.np. If you have difficulty reading this bulletin, you can access it [online](#).