

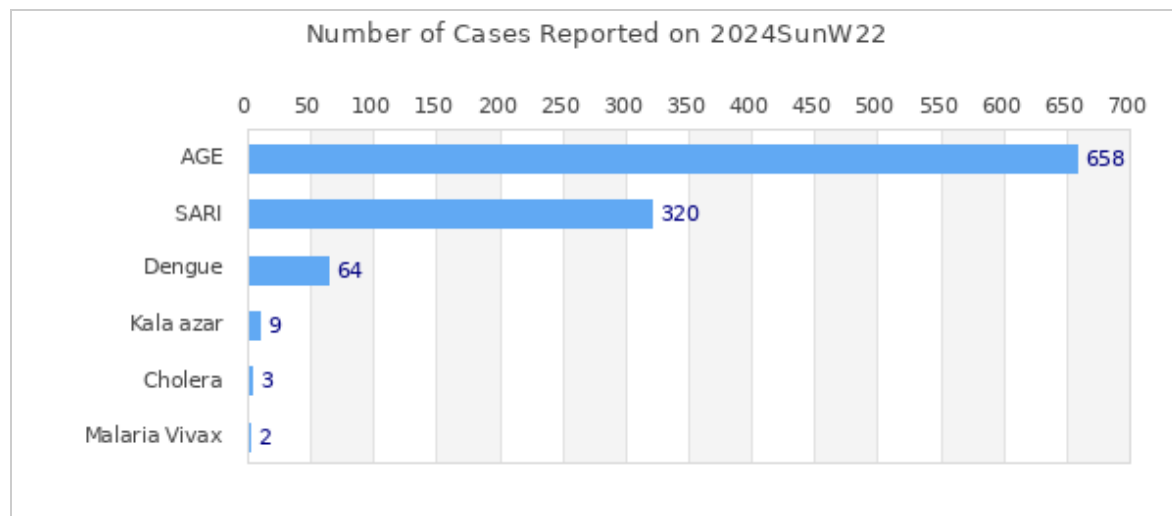


Highlights

Among the reported diseases, **AGE** is the leading cause of morbidity in Week 22 with **658** reported cases.

Overall reporting rate of Week 22 is **93.2%** with 110 out of 118 sentinel sites reporting to EWARS.

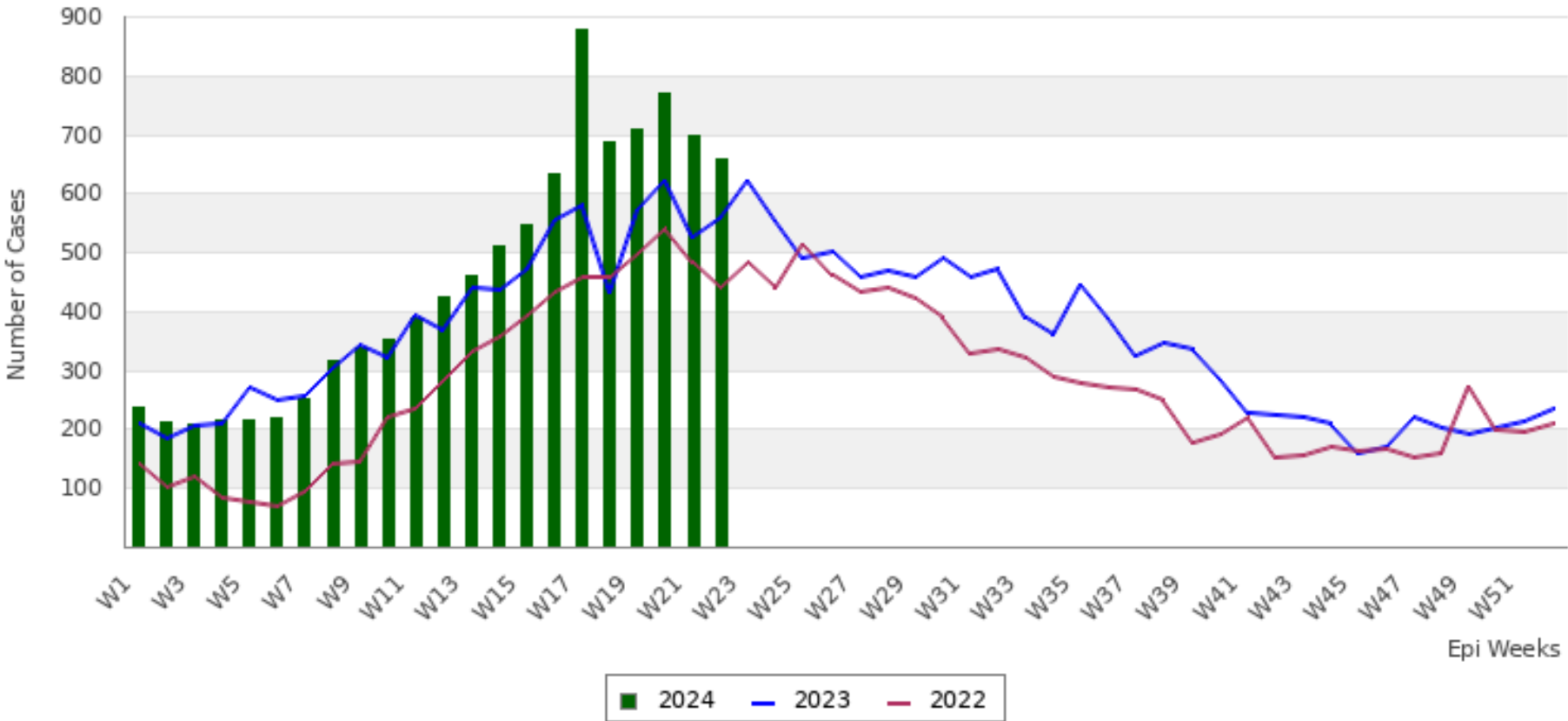
â€¢ 1003570 cases of Corona Virus disease (COVID-19) have been confirmed in Nepal, of which 991509 cases have been recovered so far.

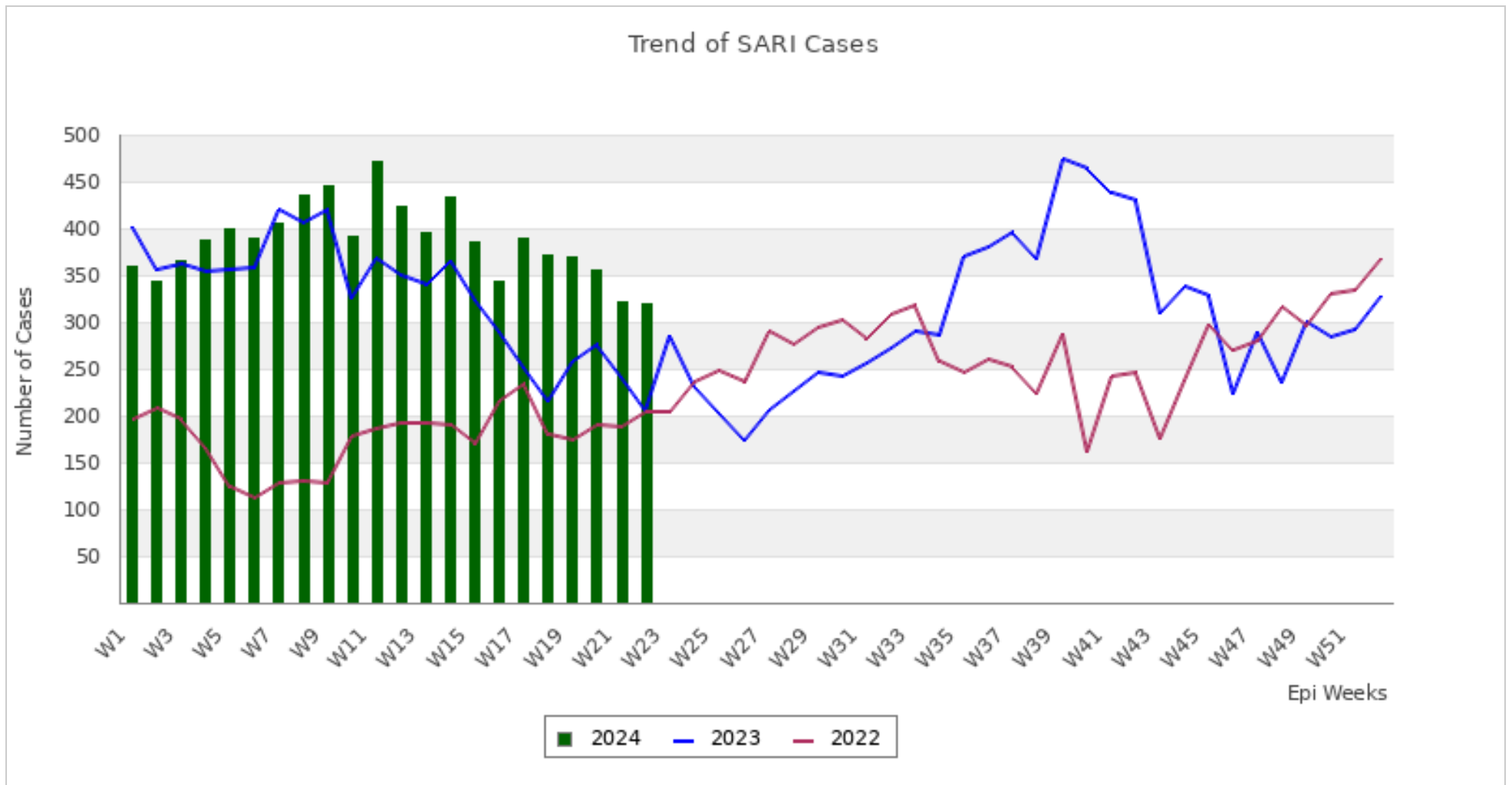


This bulletin includes data since January 2022 till date, including comparison of the same period last two year. Since, May 2019, 36 new sentinel sites (including public hospitals, private hospitals, and medical colleges) were added and was gradually oriented and started reporting, thus increasing the number of reporting sites. The current number of sentinel sites is 118.

Trend of Outbreak Prone Diseases/Syndromes

Trend of AGE Cases





Comparative Analysis by Disease/Syndrome (Week 22, 2024)

Disease	Week 21, 2024 (Previous Week)	Week 22, 2024 (This Week)	Change in No. of Cases	Week 22, 2023 (Last Year Same Week)
AGE	699	658	-41 ■	559
SARI	321	320	-1 ■	205
Cholera	2	3	1 ■	0
Malaria Vivax	1	2	1 ■	0
Malaria Falciparum	1	0	-1 ■	1
Dengue	58	64	6 ■	59

Kala azar	7	9	2	■	3
Scrub Typhus	65	81	16	■	61
Enteric Fever	44	57	13	■	63
Influenza Like Illness	96	136	40	■	58

■ Increase in number of cases
■ Decrease in number of cases
■ No change in number of cases

Summary Observation

Most of the **AGE** cases were reported from KATHMANDU (74 cases), PARSA (50 cases), KAPILBASTU (34 cases), KAILALI (32 cases) and LALITPUR (25 cases).

Most of the **SARI** cases were reported from KATHMANDU (37 cases), MORANG (22 cases), JHAPA (15 cases), RUPANDEHI (13 cases) and SUNSARI (13 cases).

Most of the **Dengue** cases were reported from JHAPA (9 cases), KATHMANDU (7 cases), KAVREPALANCHOK (5 cases), DOTI (3 cases) and TANAHU (3 cases).

Malaria Vivax case(s) were reported from GULMI (1 case) and NAWALPARASI EAST (1 case).

Most of the **Kala azar** cases were reported from KATHMANDU (5 cases), SURKHET (2 cases), PYUTHAN (1 case) and LALITPUR (1 case).

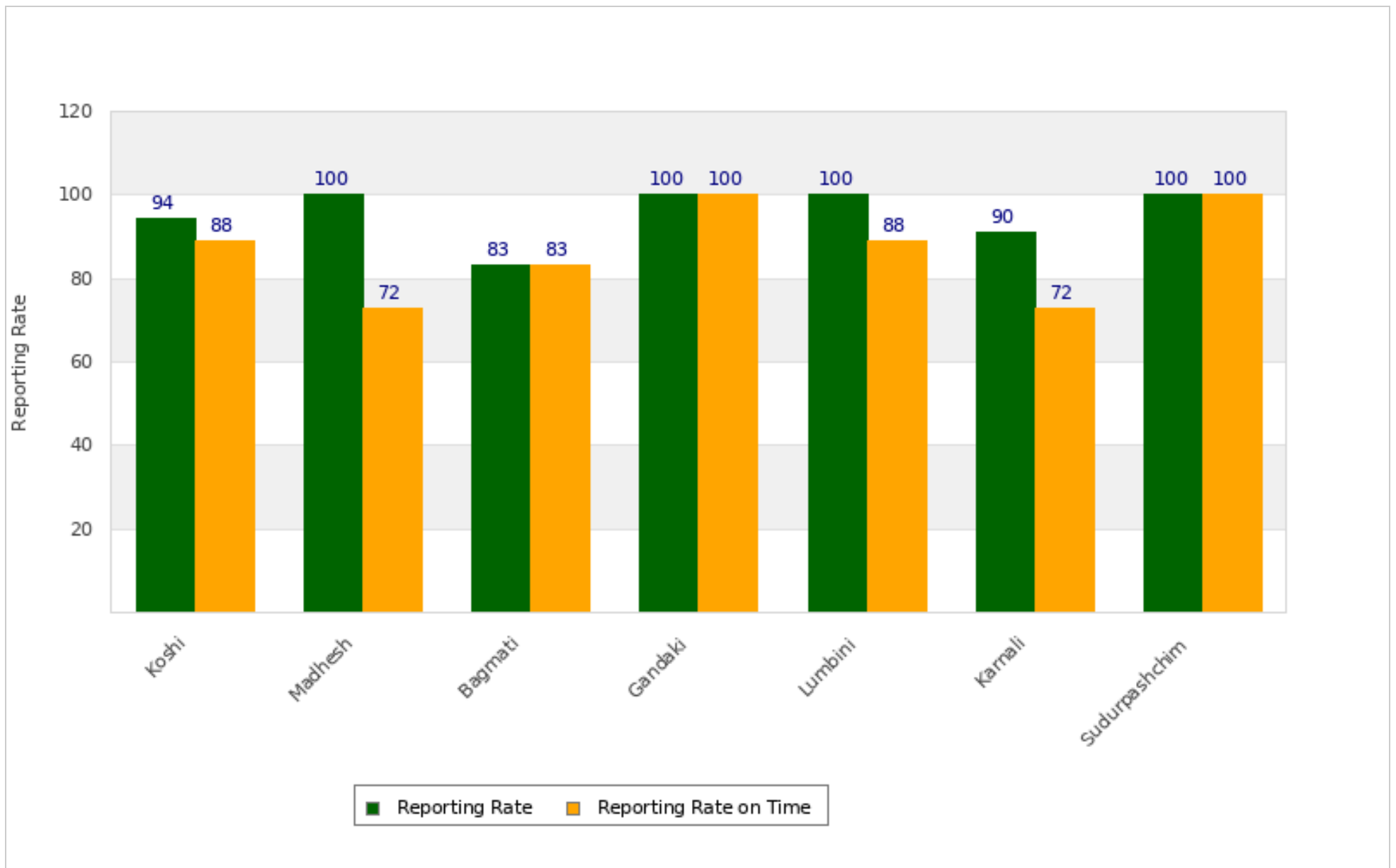
Cholera case(s) were reported from RAUTAHAT (3 cases).

Most of the **Scrub Typhus** cases were reported from ACHHAM (11 cases), DADEL DHURA (11 cases), BAITADI (6 cases), DARCHULA (5 cases) and LAMJUNG (5 cases).

Most of the **Enteric Fever** cases were reported from BARDIYA (6 cases), DADEL DHURA (5 cases), DARCHULA (4 cases), UDAYAPUR (4 cases) and MORANG (4 cases).

Most of the **Influenza Like Illness** cases were reported from ACHHAM (35 cases), SINDHUPALCHOK (26 cases), BAJURA (18 cases), RUKUM WEST (11 cases) and RASUWA (10 cases).

Province Reporting Status (Week 22, 2024)



Acknowledgement: The Epidemiology and Disease Control Division (EDCD) highly acknowledges the contribution from all the sentinel sites, medical recorders, EWARS focal persons, rapid response team members and technical support from WHO and GIZ for preparation of this bulletin.

Note: This bulletin is also available at the EDCD website. Other information can also be accessed at the website www.edcd.gov.np. If you have difficulty reading this bulletin, you can access it [online](#).