

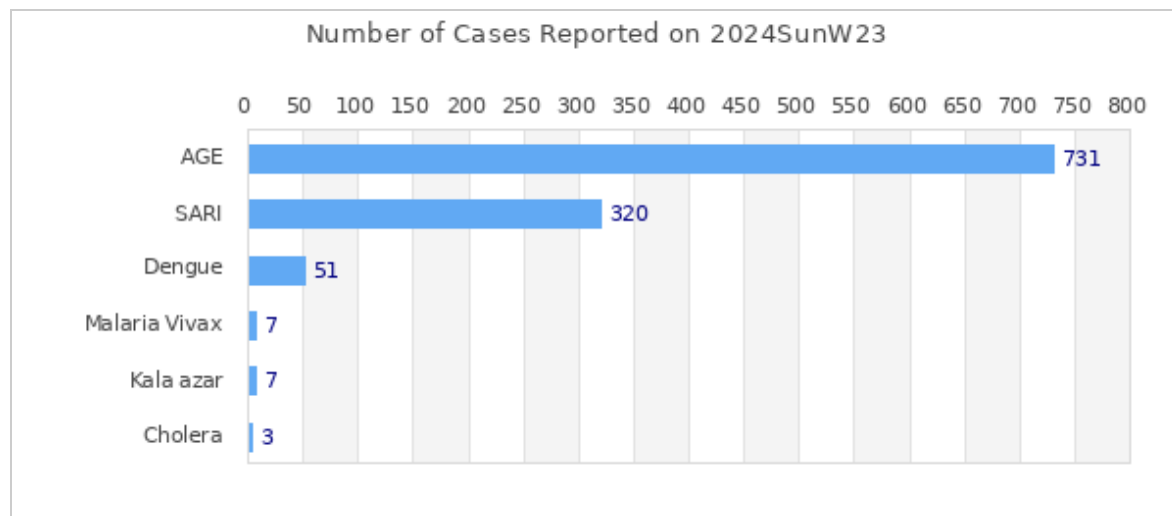


Highlights

Among the reported diseases, **AGE** is the leading cause of morbidity in Week 23 with **731** reported cases.

Overall reporting rate of Week 23 is **94.9%** with 112 out of 118 sentinel sites reporting to EWARS.

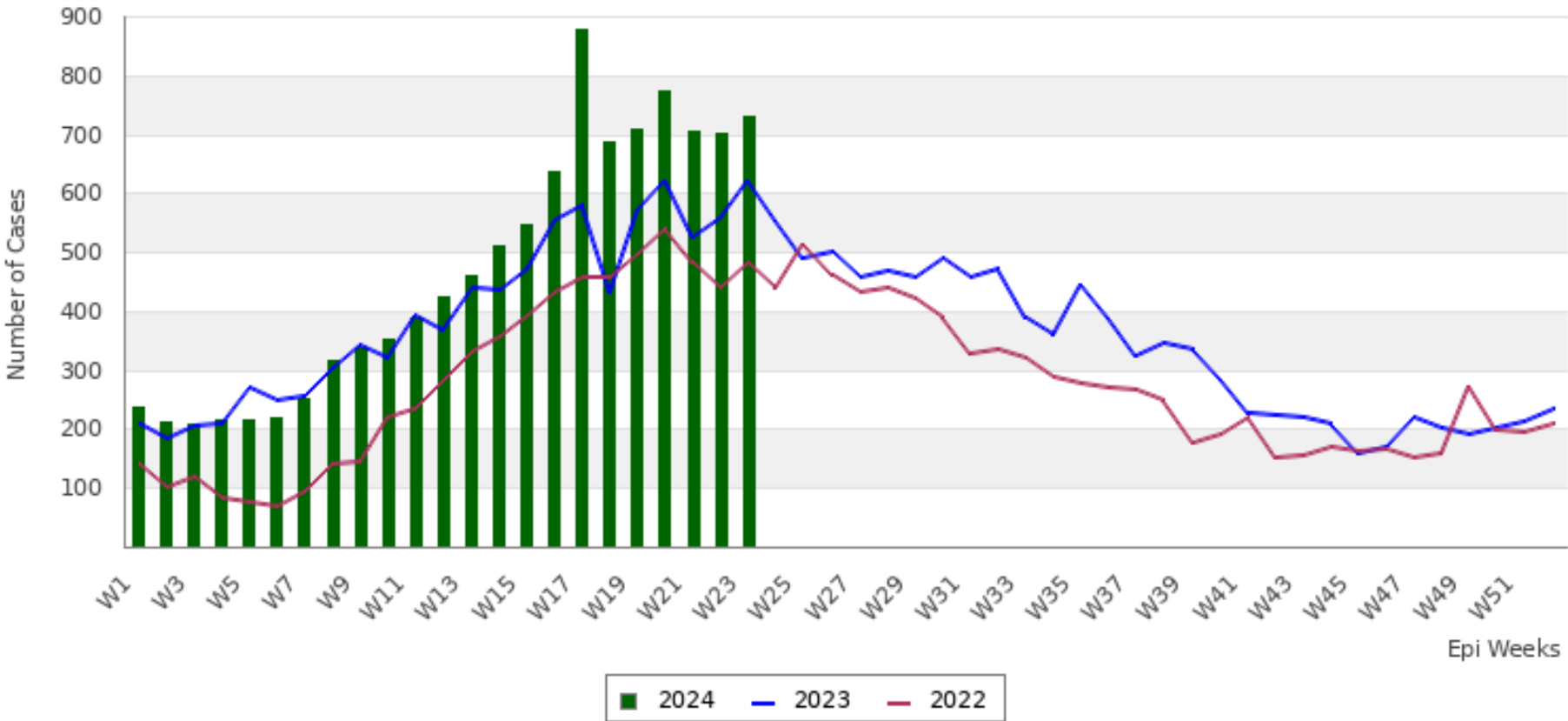
â€¢ 1003570 cases of Corona Virus disease (COVID-19) have been confirmed in Nepal, of which 991509 cases have been recovered so far.

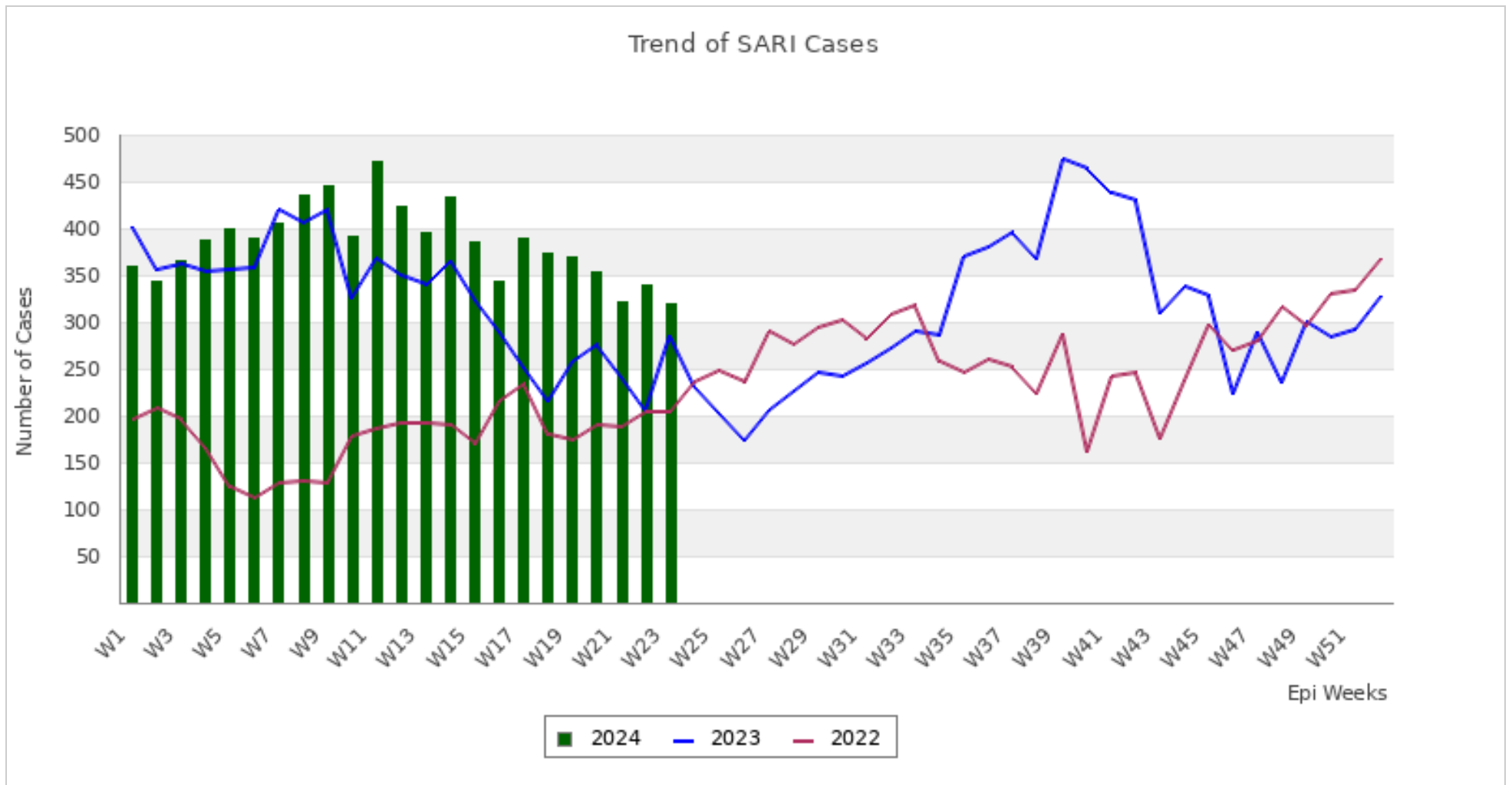


This bulletin includes data since January 2022 till date, including comparison of the same period last two year. Since, May 2019, 36 new sentinel sites (including public hospitals, private hospitals, and medical colleges) were added and was gradually oriented and started reporting, thus increasing the number of reporting sites. The current number of sentinel sites is 118.

Trend of Outbreak Prone Diseases/Syndromes

Trend of AGE Cases





Comparative Analysis by Disease/Syndrome (Week 23, 2024)

Disease	Week 22, 2024 (Previous Week)	Week 23, 2024 (This Week)	Change in No. of Cases	Week 23, 2023 (Last Year Same Week)
AGE	703	731	28 ■	622
SARI	339	320	-19 ■	285
Cholera	3	3	0 ■	0
Malaria Vivax	2	7	5 ■	2
Malaria Falciparum	0	0	0 ■	1
Dengue	66	51	-15 ■	100

Kala azar	9	7	-2	■	2
Scrub Typhus	85	84	-1	■	35
Enteric Fever	58	67	9	■	92
Influenza Like Illness	139	111	-28	■	79

■ Increase in number of cases
■ Decrease in number of cases
■ No change in number of cases

Summary Observation

Most of the **AGE** cases were reported from KATHMANDU (78 cases), PARSA (48 cases), MAHOTTARI (48 cases), LALITPUR (34 cases) and PALPA (33 cases).

Most of the **SARI** cases were reported from KATHMANDU (48 cases), MAHOTTARI (18 cases), KAILALI (14 cases), KASKI (13 cases) and SUNSARI (13 cases).

Most of the **Dengue** cases were reported from KATHMANDU (10 cases), JHAPA (7 cases), ARGHAKHANCHI (3 cases), NUWAKOT (3 cases) and ILAM (3 cases).

Most of the **Malaria Vivax** cases were reported from KAILALI (2 cases), DHANUSA (2 cases), BAJURA (1 case), RUPANDEHI (1 case) and MAKWANPUR (1 case).

Most of the **Kala azar** cases were reported from KATHMANDU (3 cases), DOLPA (2 cases), BARDIYA (1 case) and MAKWANPUR (1 case).

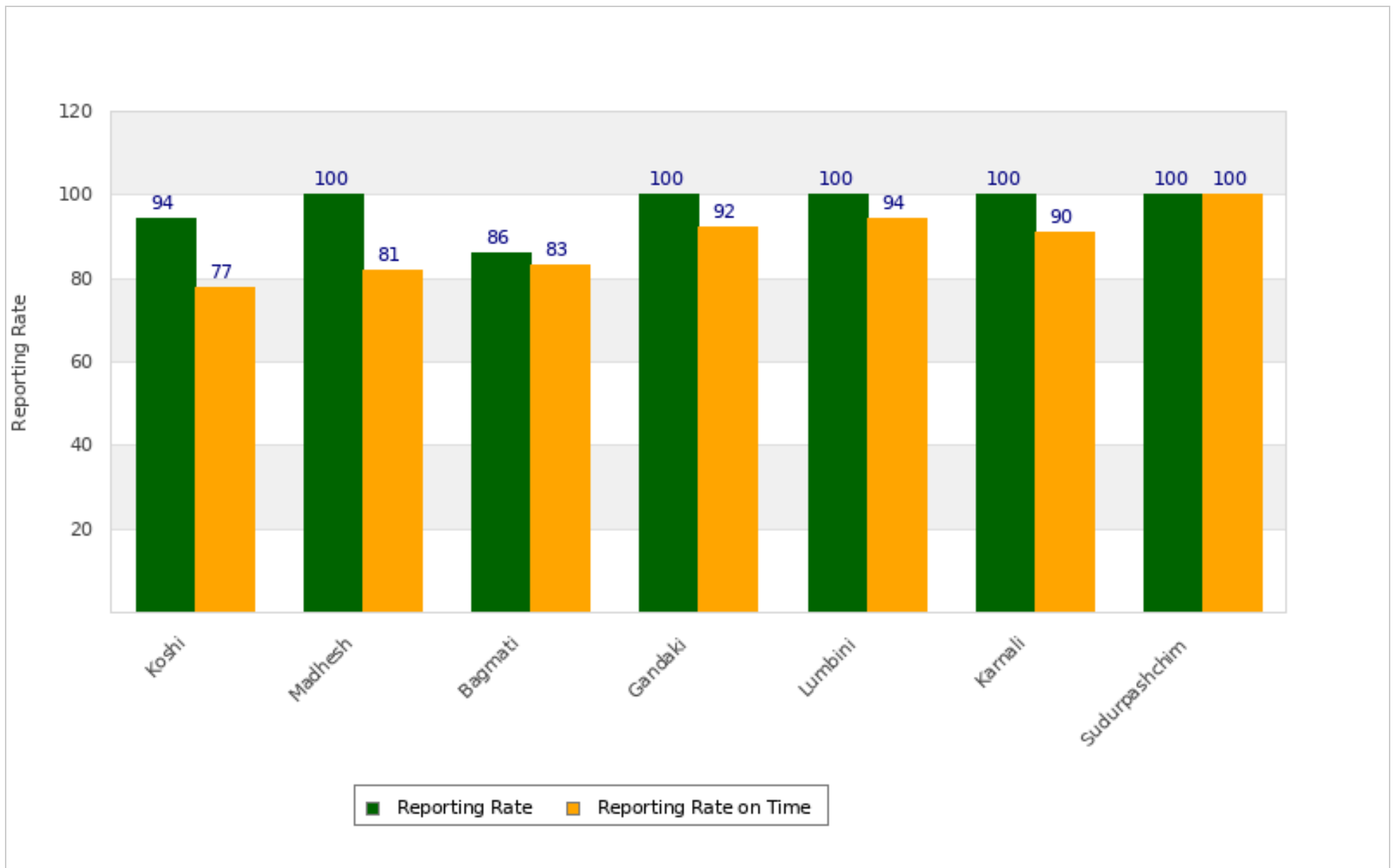
Cholera case(s) were reported from RAUTAHAT (3 cases).

Most of the **Scrub Typhus** cases were reported from KATHMANDU (9 cases), MAKWANPUR (8 cases), SYANGJA (6 cases), DADEL DHURA (5 cases) and SURKHET (5 cases).

Most of the **Enteric Fever** cases were reported from DADEL DHURA (11 cases), DARCHULA (11 cases), KATHMANDU (8 cases), RUPANDEHI (5 cases) and DHANUSA (3 cases).

Most of the **Influenza Like Illness** cases were reported from ACHHAM (41 cases), BAJURA (20 cases), RUKUM WEST (16 cases), RASUWA (8 cases) and BAITADI (6 cases).

Province Reporting Status (Week 23, 2024)



Acknowledgement: The Epidemiology and Disease Control Division (EDCD) highly acknowledges the contribution from all the sentinel sites, medical recorders, EWARS focal persons, rapid response team members and technical support from WHO and GIZ for preparation of this bulletin.

Note: This bulletin is also available at the EDCD website. Other information can also be accessed at the website www.edcd.gov.np. If you have difficulty reading this bulletin, you can access it [online](#).