

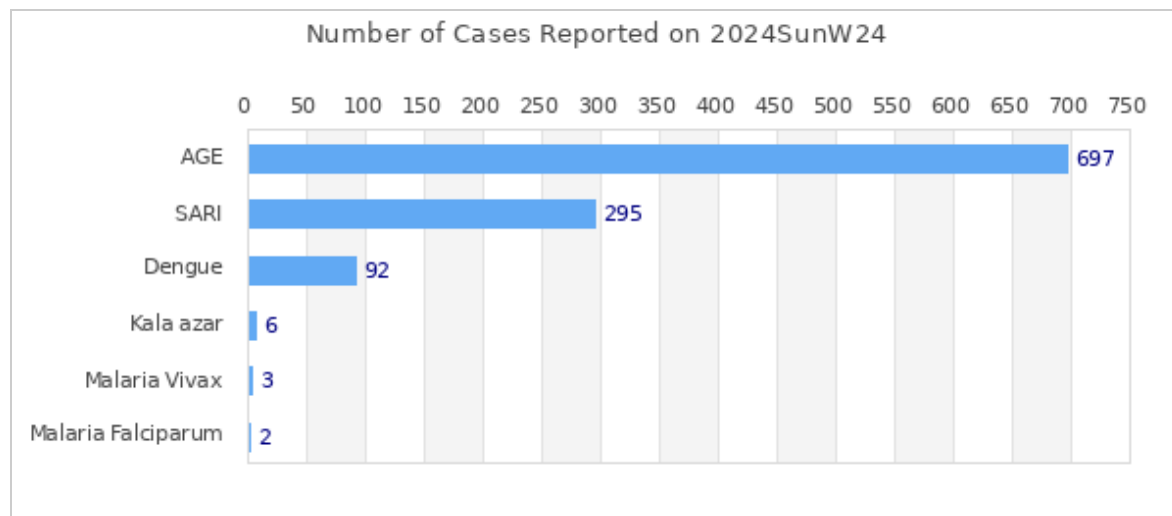


## Highlights

Among the reported diseases, **AGE** is the leading cause of morbidity in Week 24 with **697** reported cases.

Overall reporting rate of Week 24 is **90.7%** with 107 out of 118 sentinel sites reporting to EWARS.

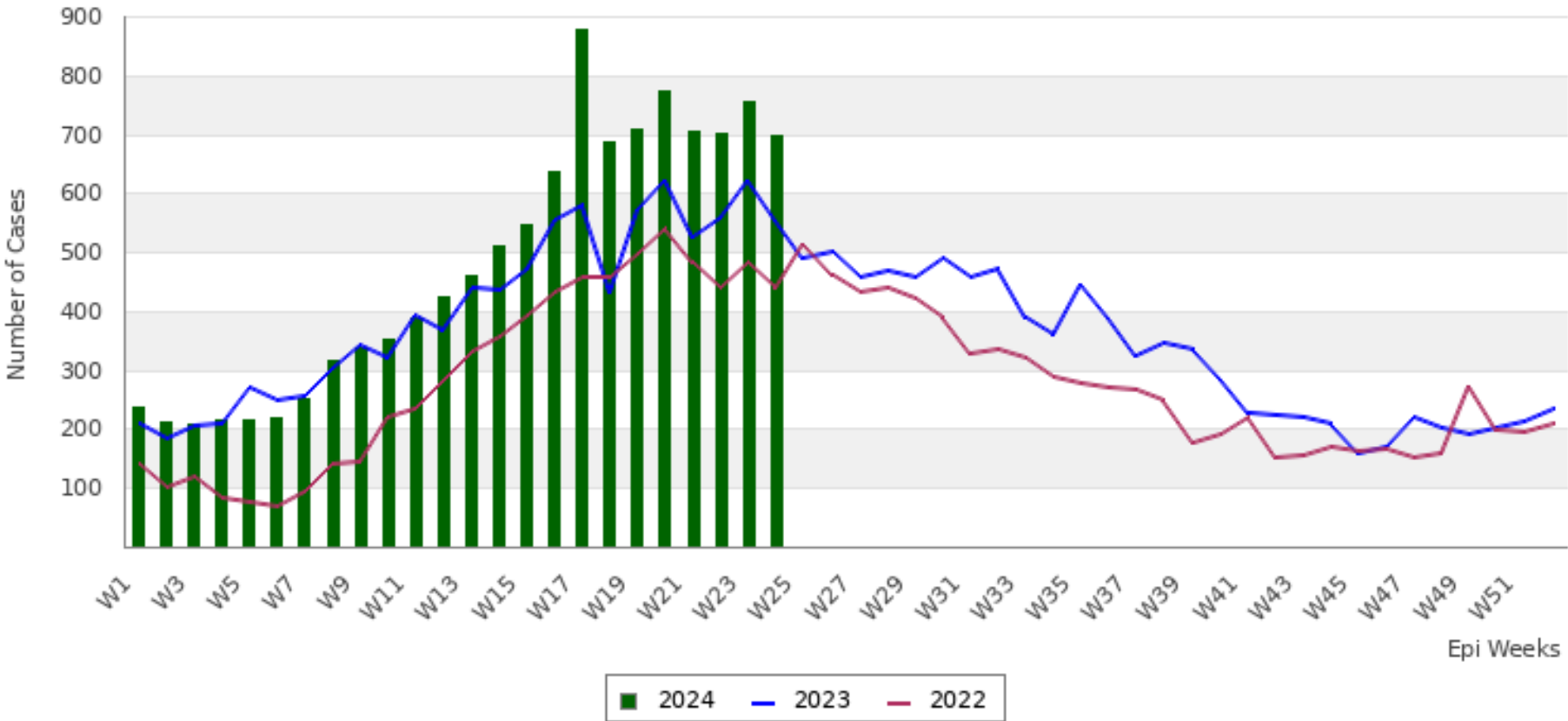
1003570 cases of Corona Virus disease (COVID-19) have been confirmed in Nepal, of which 991509 cases have been recovered so far.

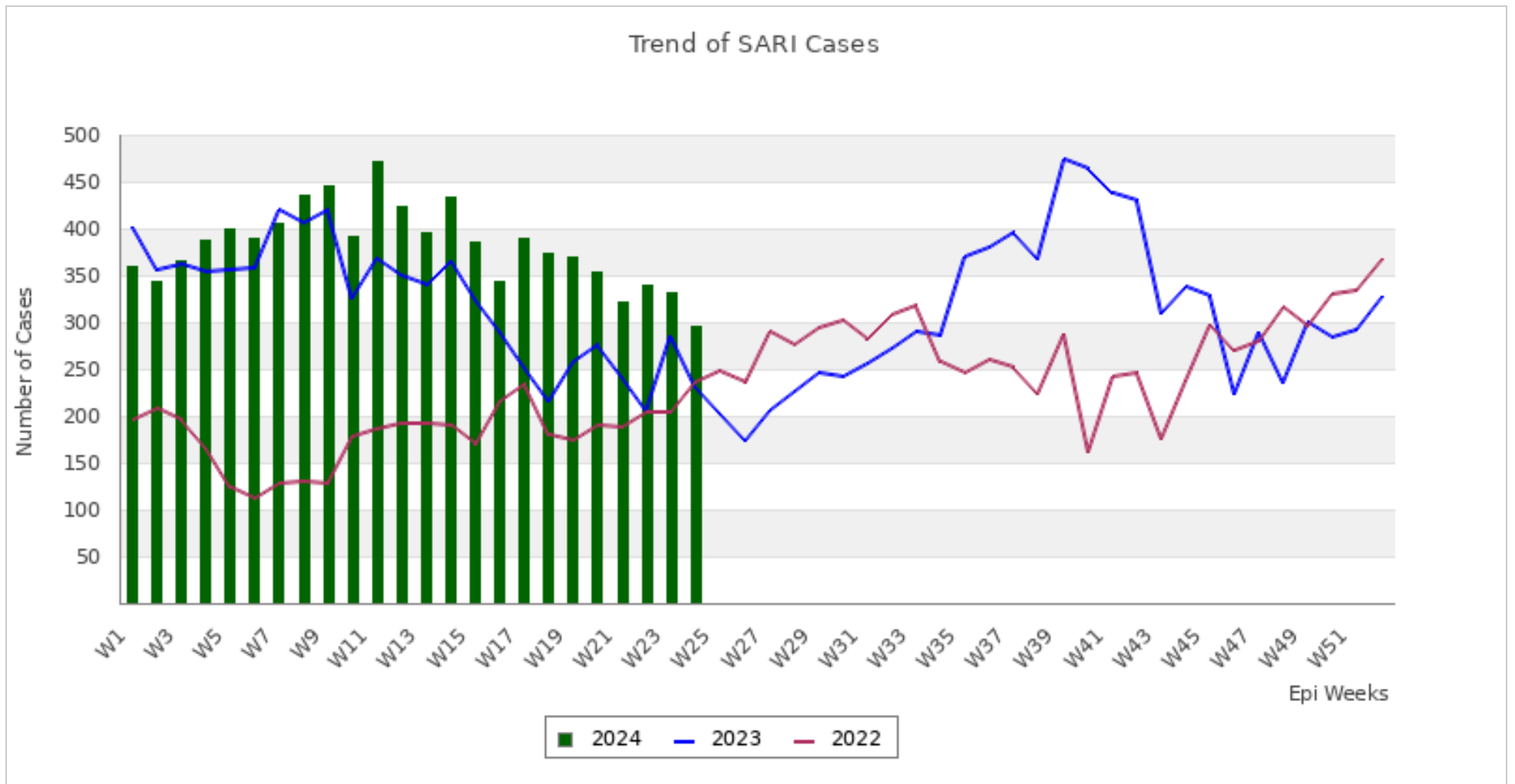


This bulletin includes data since January 2022 till date, including comparison of the same period last two year. Since, May 2019, 36 new sentinel sites (including public hospitals, private hospitals, and medical colleges) were added and was gradually oriented and started reporting, thus increasing the number of reporting sites. The current number of sentinel sites is 118.

## Trend of Outbreak Prone Diseases/Syndromes

Trend of AGE Cases





### Comparative Analysis by Disease/Syndrome (Week 24, 2024)

Disease	Week 23, 2024 (Previous Week)	Week 24, 2024 (This Week)	Change in No. of Cases	Week 24, 2023 (Last Year Same Week)
AGE	756	697	-59 <span style="color: green;">■</span>	553
SARI	331	295	-36 <span style="color: green;">■</span>	231
Cholera	3	0	-3 <span style="color: green;">■</span>	0
Malaria Vivax	7	3	-4 <span style="color: green;">■</span>	2
Malaria Falciparum	0	2	2 <span style="color: red;">■</span>	0
Dengue	51	92	41 <span style="color: red;">■</span>	180

<b>Kala azar</b>	7	6	-1	■	6
<b>Scrub Typhus</b>	88	81	-7	■	38
<b>Enteric Fever</b>	68	70	2	■	74
<b>Influenza Like Illness</b>	111	82	-29	■	76

■ Increase in number of cases     
■ Decrease in number of cases     
■ No change in number of cases

### Summary Observation

Most of the **AGE** cases were reported from KATHMANDU (95 cases), PARSA (49 cases), LALITPUR (37 cases), KAPILBASTU (25 cases) and CHITAWAN (25 cases).

Most of the **SARI** cases were reported from KATHMANDU (39 cases), KAPILBASTU (16 cases), RUPANDEHI (16 cases), MORANG (16 cases) and PYUTHAN (11 cases).

Most of the **Dengue** cases were reported from KATHMANDU (19 cases), DOTI (12 cases), TANAHU (6 cases), KAVREPALANCHOK (4 cases) and BHAKTAPUR (4 cases).

Most of the **Malaria Vivax** cases were reported from BAJURA (1 case), PALPA (1 case) and GULMI (1 case).

**Malaria Falciparum** case(s) were reported from TANAHU (1 case) and RAUTAHAT (1 case).

Most of the **Kala azar** cases were reported from KATHMANDU (3 cases), SURKHET (1 case), RUPANDEHI (1 case) and DOLAKHA (1 case).

Most of the **Scrub Typhus** cases were reported from RUKUM WEST (10 cases), DOTI (9 cases), SURKHET (7 cases), CHITAWAN (6 cases) and TANAHU (5 cases).

Most of the **Enteric Fever** cases were reported from DARCHULA (14 cases), KATHMANDU (7 cases), ROLPA (3 cases), MORANG (3 cases) and JHAPA (3 cases).

Most of the **Influenza Like Illness** cases were reported from ACHHAM (40 cases), BAJURA (20 cases), LALITPUR (9 cases), BAITADI (3 cases) and KATHMANDU (3 cases).

### Province Reporting Status (Week 24, 2024)



**Acknowledgement:** The Epidemiology and Disease Control Division (EDCD) highly acknowledges the contribution from all the sentinel sites, medical recorders, EWARS focal persons, rapid response team members and technical support from WHO and GIZ for preparation of this bulletin.

**Note:** This bulletin is also available at the EDCD website. Other information can also be accessed at the website [www.edcd.gov.np](http://www.edcd.gov.np). If you have difficulty reading this bulletin, you can access it [online](#).