

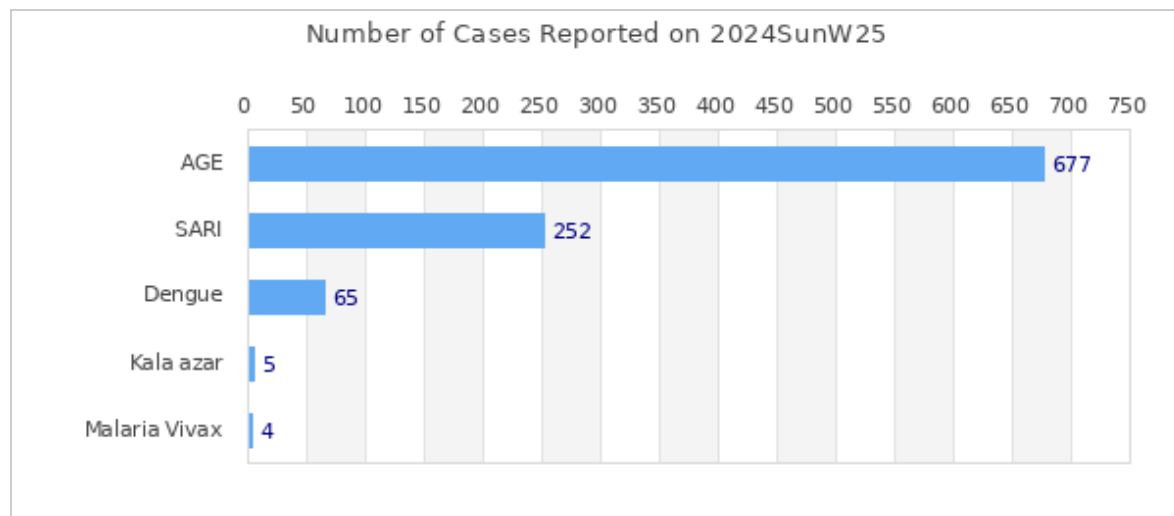


## Highlights

Among the reported diseases, **AGE** is the leading cause of morbidity in Week 25 with **677** reported cases.

Overall reporting rate of Week 25 is **92.4%** with 109 out of 118 sentinel sites reporting to EWARS.

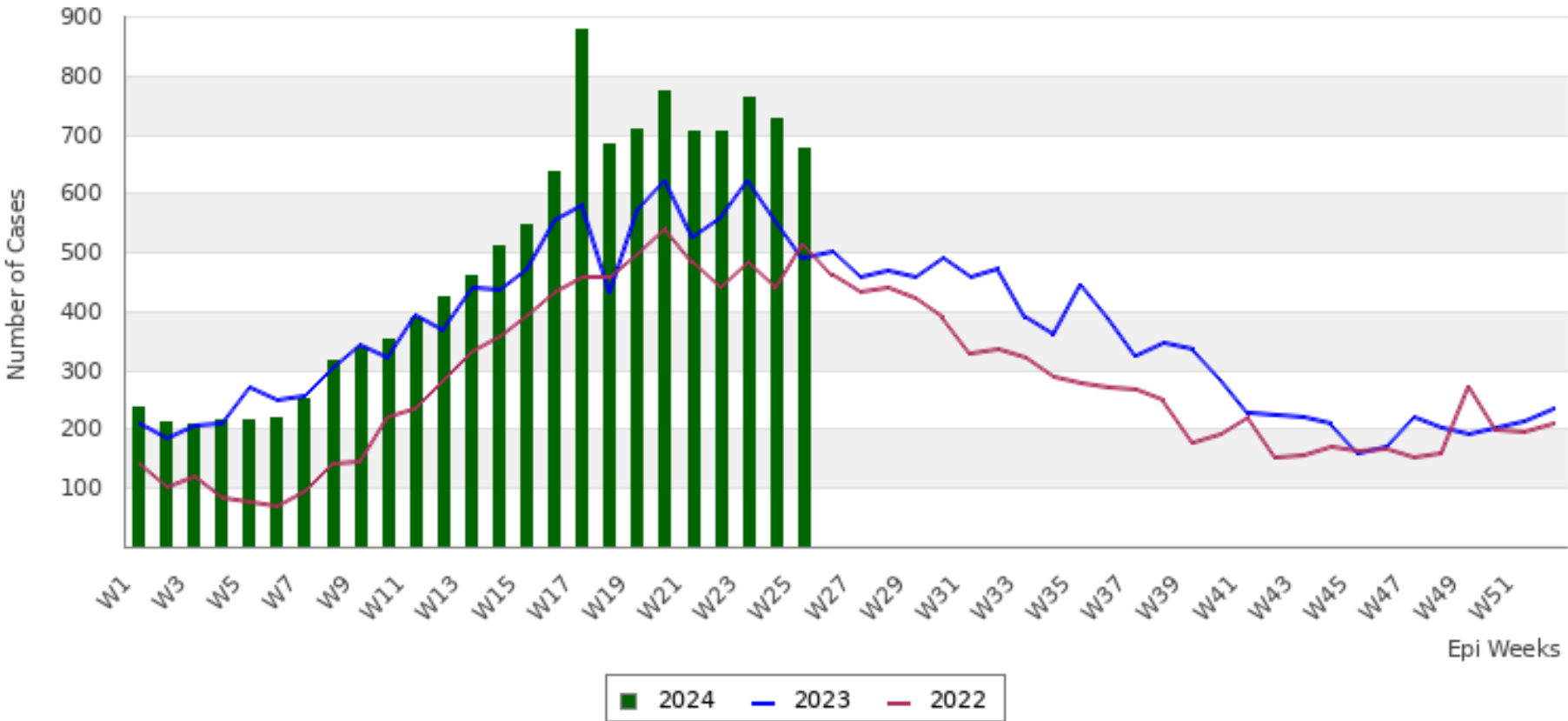
â€¢ 1003573 cases of Corona Virus disease (COVID-19) have been confirmed in Nepal, of which 991509 cases have been recovered so far.

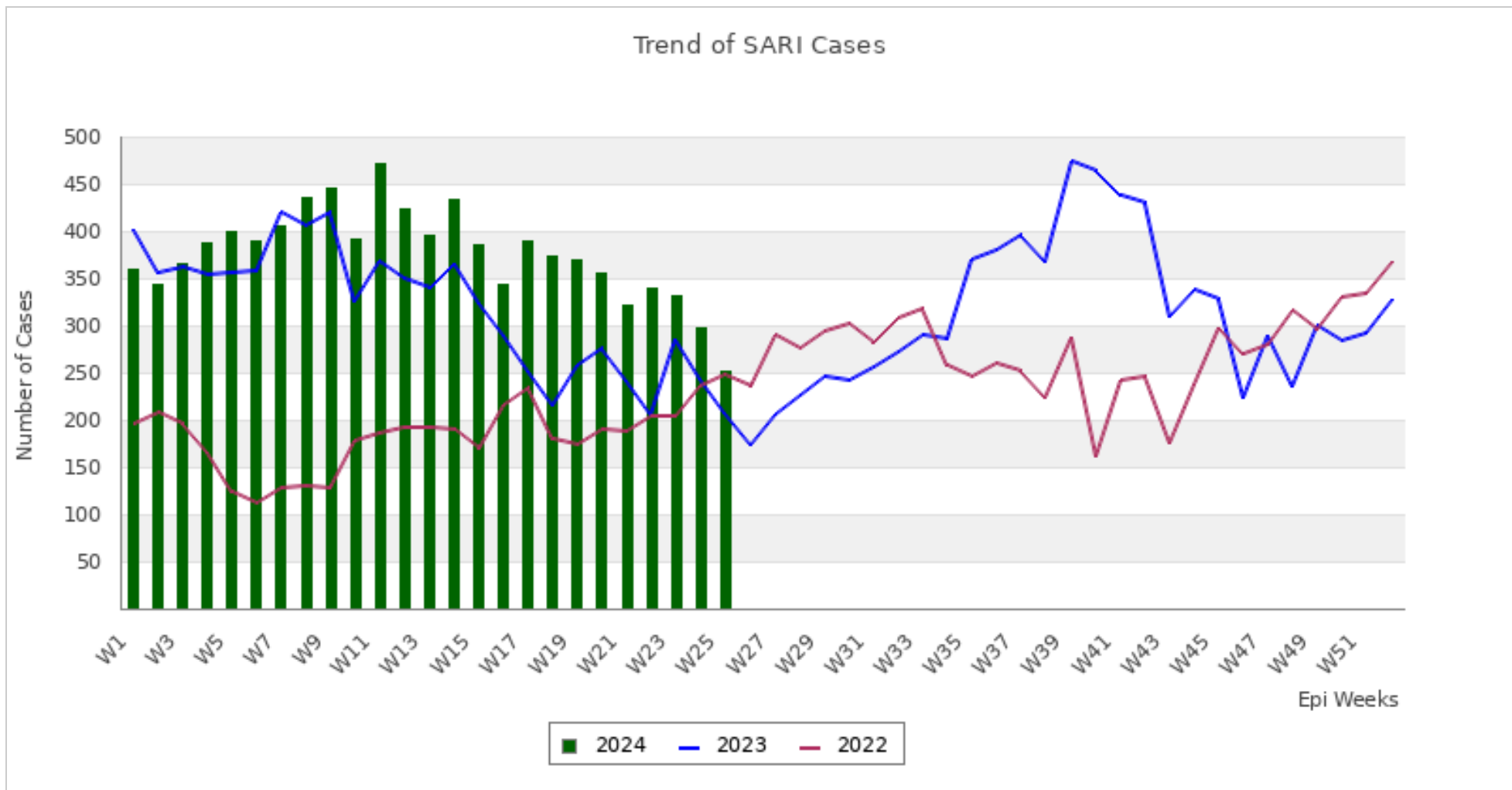


This bulletin includes data since January 2022 till date, including comparison of the same period last two year. Since, May 2019, 36 new sentinel sites (including public hospitals, private hospitals, and medical colleges) were added and was gradually oriented and started reporting, thus increasing the number of reporting sites. The current number of sentinel sites is 118.

## Trend of Outbreak Prone Diseases/Syndromes

Trend of AGE Cases





### Comparative Analysis by Disease/Syndrome (Week 25, 2024)

Disease	Week 24, 2024 (Previous Week)	Week 25, 2024 (This Week)	Change in No. of Cases	Week 25, 2023 (Last Year Same Week)
AGE	727	677	-50 <span style="color: green;">■</span>	489
SARI	298	252	-46 <span style="color: green;">■</span>	208
Cholera	0	0	0 <span style="color: gray;">■</span>	0
Malaria Vivax	3	4	1 <span style="color: red;">■</span>	0
Malaria Falciparum	2	0	-2 <span style="color: green;">■</span>	0
Dengue	93	65	-28 <span style="color: green;">■</span>	337

<b>Kala azar</b>	6	5	-1	■	2
<b>Scrub Typhus</b>	93	80	-13	■	16
<b>Enteric Fever</b>	74	83	9	■	67
<b>Influenza Like Illness</b>	99	98	-1	■	64

■ Increase in number of cases

■ Decrease in number of cases

■ No change in number of cases

### Summary Observation

Most of the **AGE** cases were reported from KATHMANDU (81 cases), PARSA (40 cases), LALITPUR (37 cases), KAILALI (25 cases) and KASKI (25 cases).

Most of the **SARI** cases were reported from KATHMANDU (42 cases), MORANG (19 cases), RUPANDEHI (18 cases), KASKI (12 cases) and KAPILBASTU (10 cases).

Most of the **Dengue** cases were reported from KATHMANDU (14 cases), KAVREPALANCHOK (6 cases), DOTI (5 cases), ACHHAM (4 cases) and PALPA (3 cases).

**Malaria Vivax** case(s) were reported from KAILALI (2 cases) and BAJURA (2 cases).

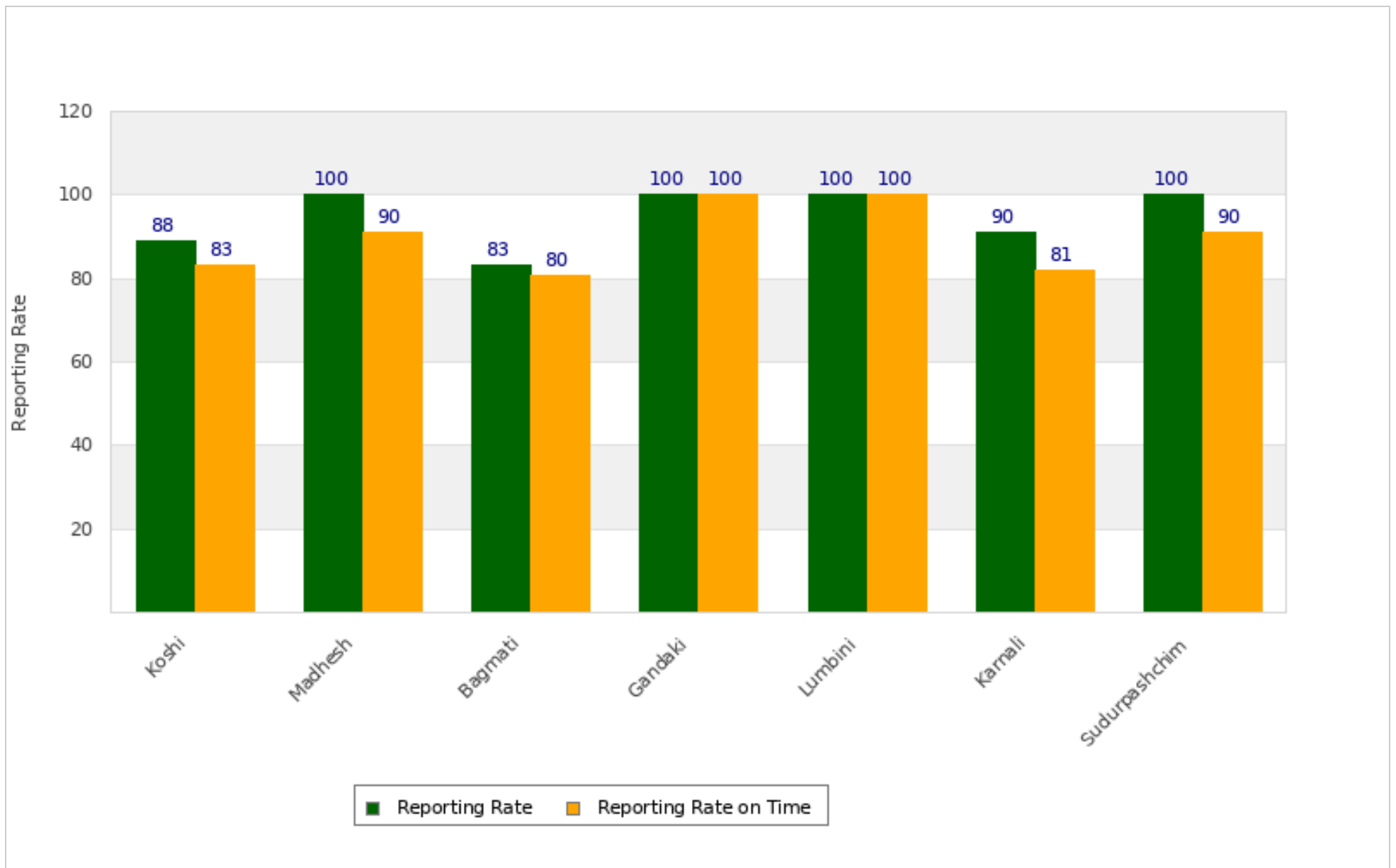
Most of the **Kala azar** cases were reported from KALIKOT (2 cases), DOTI (1 case), RUKUM WEST (1 case) and PANCHTHAR (1 case).

Most of the **Scrub Typhus** cases were reported from SANKHUWASABHA (14 cases), OKHALDHUNGA (9 cases), SYANGJA (8 cases), ACHHAM (7 cases) and SURKHET (5 cases).

Most of the **Enteric Fever** cases were reported from DARCHULA (8 cases), OKHALDHUNGA (7 cases), KATHMANDU (6 cases), PARSA (6 cases) and SINDHUPALCHOK (5 cases).

Most of the **Influenza Like Illness** cases were reported from SINDHUPALCHOK (34 cases), ACHHAM (18 cases), LALITPUR (9 cases), OKHALDHUNGA (7 cases) and BHAKTAPUR (6 cases).

### Province Reporting Status (Week 25, 2024)



**Acknowledgement:** The Epidemiology and Disease Control Division (EDCD) highly acknowledges the contribution from all the sentinel sites, medical recorders, EWARS focal persons, rapid response team members and technical support from WHO and GIZ for preparation of this bulletin.

**Note:** This bulletin is also available at the EDCD website. Other information can also be accessed at the website [www.edcd.gov.np](http://www.edcd.gov.np). If you have difficulty reading this bulletin, you can access it [online](#).