

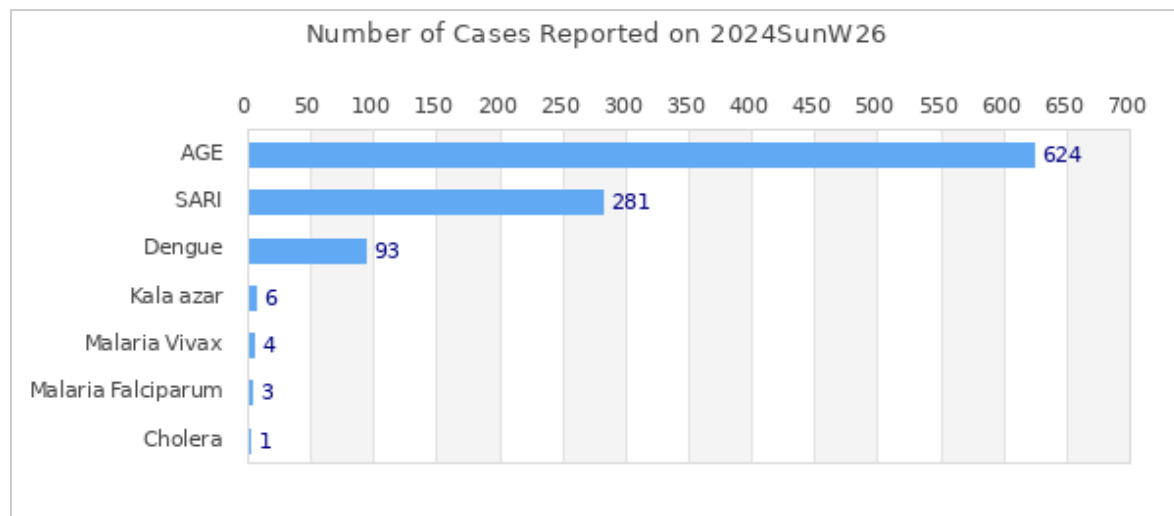


Highlights

Among the reported diseases, **AGE** is the leading cause of morbidity in Week 26 with **624** reported cases.

Overall reporting rate of Week 26 is **95.8%** with 113 out of 118 sentinel sites reporting to EWARS.

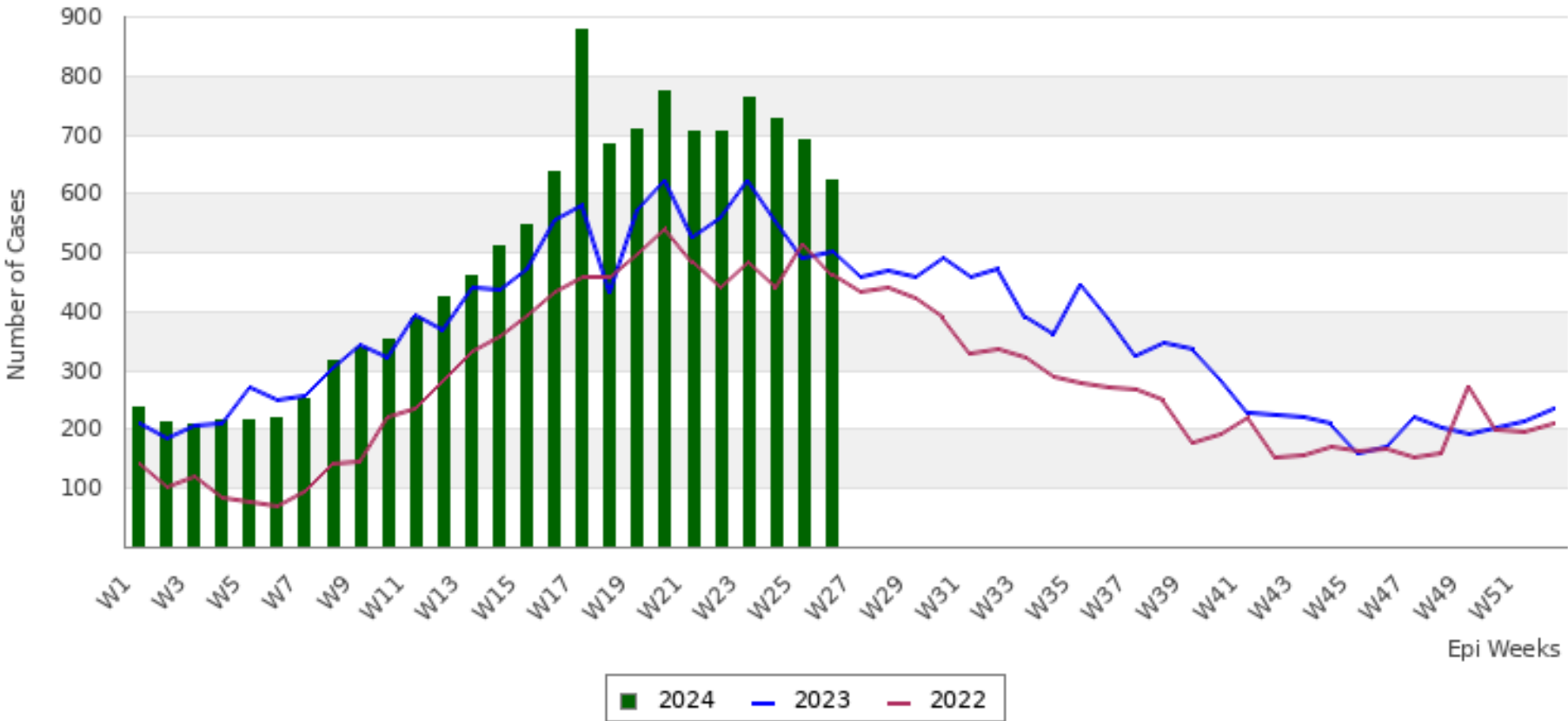
â€¢ 1003573 cases of Corona Virus disease (COVID-19) have been confirmed in Nepal, of which 991509 cases have been recovered so far.

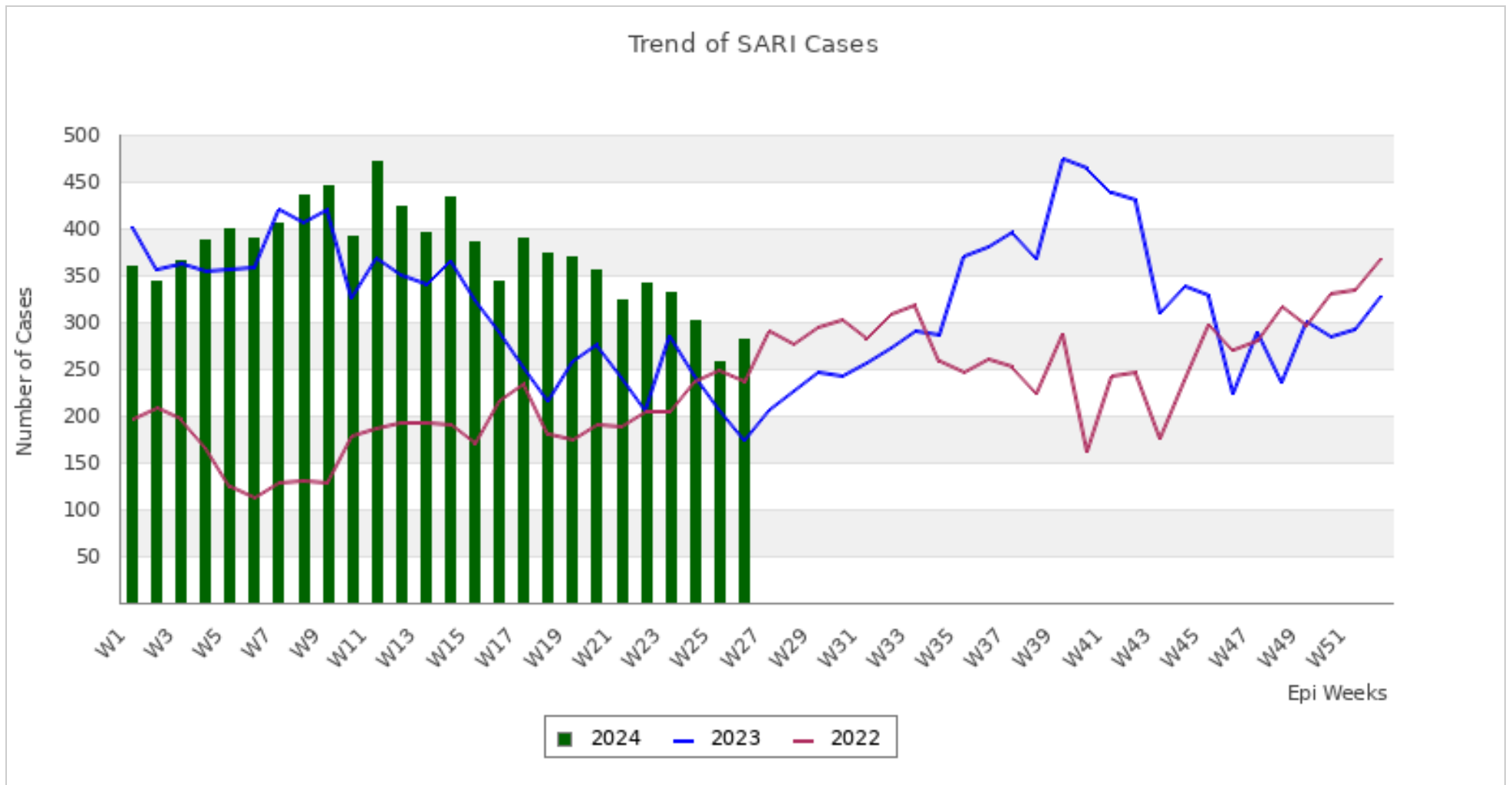


This bulletin includes data since January 2022 till date, including comparison of the same period last two year. Since, May 2019, 36 new sentinel sites (including public hospitals, private hospitals, and medical colleges) were added and was gradually oriented and started reporting, thus increasing the number of reporting sites. The current number of sentinel sites is 118.

Trend of Outbreak Prone Diseases/Syndromes

Trend of AGE Cases





Comparative Analysis by Disease/Syndrome (Week 26, 2024)

Disease	Week 25, 2024 (Previous Week)	Week 26, 2024 (This Week)	Change in No. of Cases	Week 26, 2023 (Last Year Same Week)
AGE	690	624	-66 ■	501
SARI	257	281	24 ■	173
Cholera	0	1	1 ■	0
Malaria Vivax	4	4	0 ■	2
Malaria Falciparum	0	3	3 ■	0
Dengue	65	93	28 ■	228

Kala azar	5	6	1	■	3
Scrub Typhus	80	92	12	■	15
Enteric Fever	83	72	-11	■	51
Influenza Like Illness	98	90	-8	■	64

■ Increase in number of cases

■ Decrease in number of cases

■ No change in number of cases

Summary Observation

Most of the **AGE** cases were reported from KATHMANDU (69 cases), LALITPUR (41 cases), PARSA (34 cases), BHAKTAPUR (25 cases) and KAILALI (22 cases).

Most of the **SARI** cases were reported from KATHMANDU (49 cases), MORANG (15 cases), RUPANDEHI (14 cases), KAILALI (12 cases) and SUNSARI (12 cases).

Most of the **Dengue** cases were reported from BHOJPUR (11 cases), KATHMANDU (7 cases), TERHATHUM (6 cases), JHAPA (5 cases) and KHOTANG (5 cases).

Most of the **Malaria Vivax** cases were reported from ACHHAM (1 case), DOTI (1 case), BAJURA (1 case) and SURKHET (1 case).

Malaria Falciparum case(s) were reported from MORANG (2 cases) and JHAPA (1 case).

Most of the **Kala azar** cases were reported from DHANUSA (2 cases), TAPLEJUNG (2 cases), DOTI (1 case) and KHOTANG (1 case).

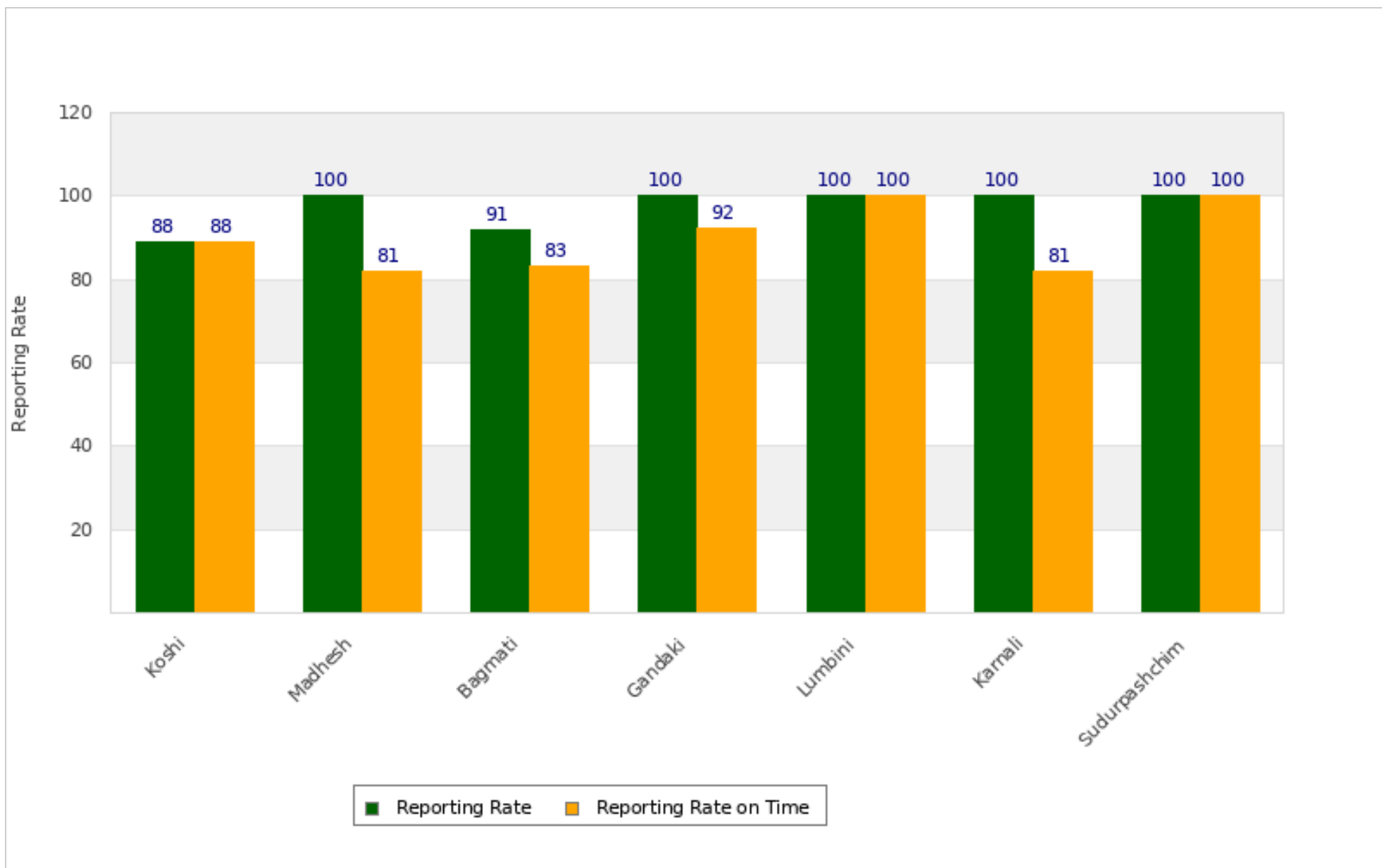
Cholera case(s) were reported from KAILALI (1 case).

Most of the **Scrub Typhus** cases were reported from SANKHUWASABHA (18 cases), CHITAWAN (8 cases), PALPA (8 cases), OKHALDHUNGA (7 cases) and ACHHAM (6 cases).

Most of the **Enteric Fever** cases were reported from DADEL DHURA (11 cases), DARCHULA (9 cases), MAHOTTARI (8 cases), BAITADI (7 cases) and PARSA (5 cases).

Most of the **Influenza Like Illness** cases were reported from ACHHAM (19 cases), SINDHUPALCHOK (17 cases), OKHALDHUNGA (8 cases), RUKUM WEST (7 cases) and BAJURA (6 cases).

Province Reporting Status (Week 26, 2024)



Acknowledgement: The Epidemiology and Disease Control Division (EDCD) highly acknowledges the contribution from all the sentinel sites, medical recorders, EWARS focal persons, rapid response team members and technical support from WHO and GIZ for preparation of this bulletin.

Note: This bulletin is also available at the EDCD website. Other information can also be accessed at the website www.edcd.gov.np. If you have difficulty reading this bulletin, you can access it [online](#).