

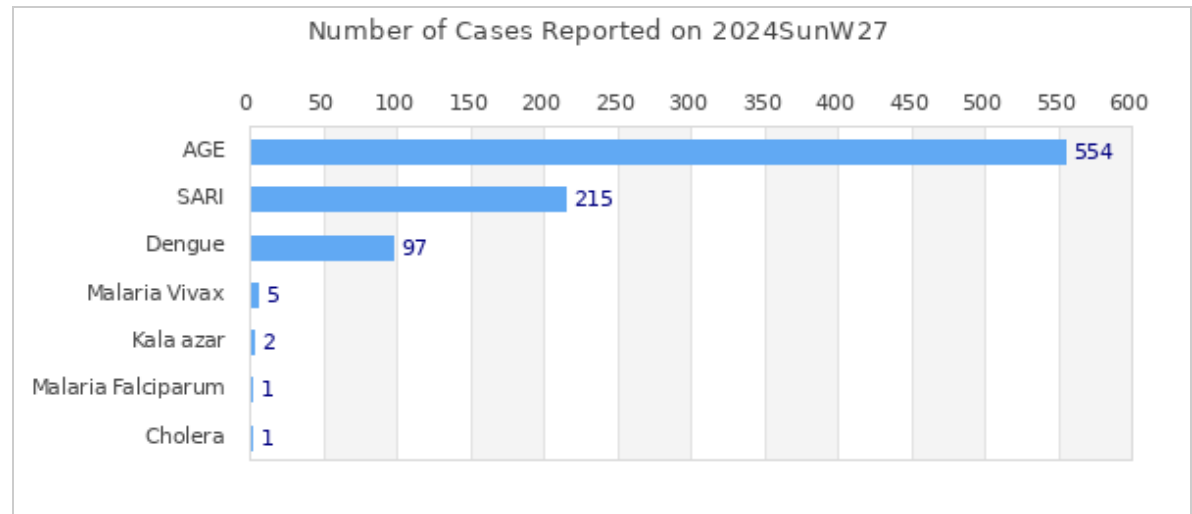


## Highlights

Among the reported diseases, **AGE** is the leading cause of morbidity in Week 27 with **554** reported cases.

Overall reporting rate of Week 27 is **94.1%** with 111 out of 118 sentinel sites reporting to EWARS.

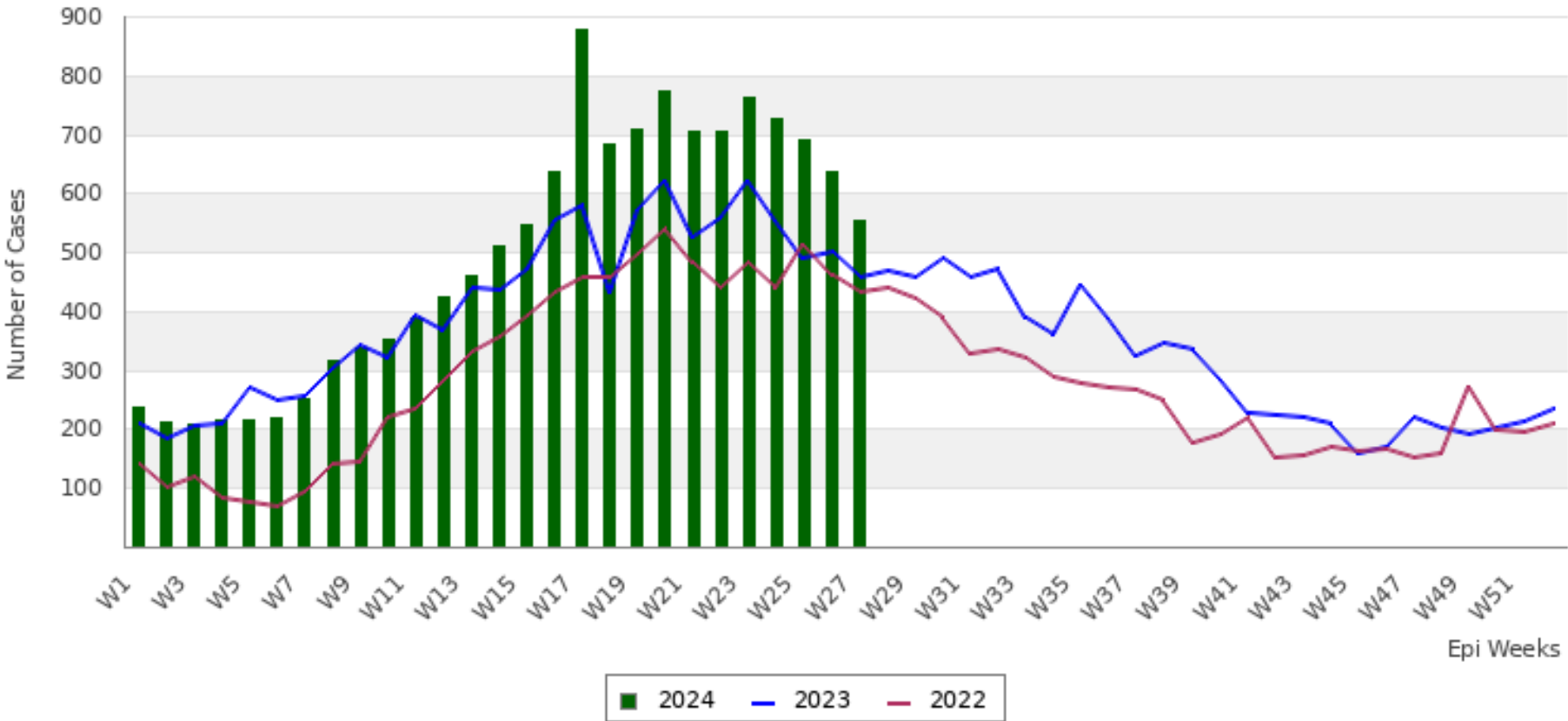
â€¢ 1003576 cases of Corona Virus disease (COVID-19) have been confirmed in Nepal, of which 991509 cases have been recovered so far. â€¢ 1003576 cases of Corona Virus disease (COVID-19) have been confirmed in Nepal, of which 991509 cases have been recovered so far.

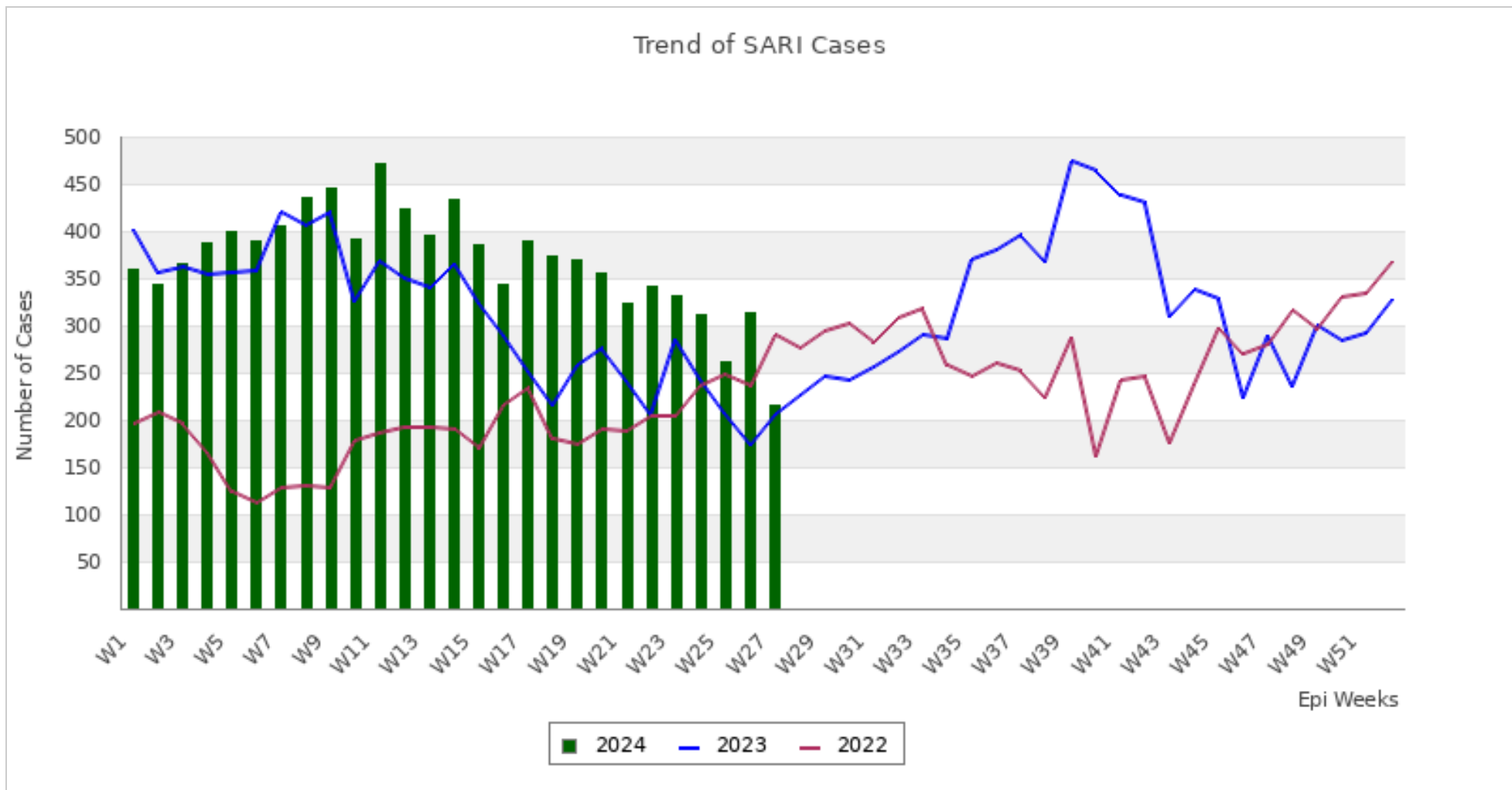


This bulletin includes data since January 2022 till date, including comparison of the same period last two year. Since, May 2019, 36 new sentinel sites (including public hospitals, private hospitals, and medical colleges) were added and was gradually oriented and started reporting, thus increasing the number of reporting sites. The current number of sentinel sites is 118.

## Trend of Outbreak Prone Diseases/Syndromes

Trend of AGE Cases





### Comparative Analysis by Disease/Syndrome (Week 27, 2024)

Disease	Week 26, 2024 (Previous Week)	Week 27, 2024 (This Week)	Change in No. of Cases	Week 27, 2023 (Last Year Same Week)
AGE	638	554	-84 <span style="color: green;">■</span>	457
SARI	313	215	-98 <span style="color: green;">■</span>	206
Cholera	1	1	0 <span style="color: gray;">■</span>	0
Malaria Vivax	4	5	1 <span style="color: red;">■</span>	2
Malaria Falciparum	3	1	-2 <span style="color: green;">■</span>	0
Dengue	93	97	4 <span style="color: red;">■</span>	443

<b>Kala azar</b>	6	2	-4	■	5
<b>Scrub Typhus</b>	92	132	40	■	18
<b>Enteric Fever</b>	74	62	-12	■	92
<b>Influenza Like Illness</b>	96	101	5	■	34

■ Increase in number of cases

■ Decrease in number of cases

■ No change in number of cases

### Summary Observation

Most of the **AGE** cases were reported from KATHMANDU (69 cases), LALITPUR (34 cases), PARSA (34 cases), PALPA (23 cases) and BHAKTAPUR (23 cases).

Most of the **SARI** cases were reported from KATHMANDU (21 cases), BHAKTAPUR (12 cases), KASKI (10 cases), CHITAWAN (10 cases) and MORANG (10 cases).

Most of the **Dengue** cases were reported from KATHMANDU (10 cases), CHITAWAN (8 cases), BHOJPUR (8 cases), KAVREPALANCHOK (7 cases) and KASKI (6 cases).

Most of the **Malaria Vivax** cases were reported from KANCHANPUR (1 case), KAILALI (1 case), RUPANDEHI (1 case), KAVREPALANCHOK (1 case) and SINDHUPALCHOK (1 case).

**Malaria Falciparum** case(s) were reported from KANCHANPUR (1 case).

**Kala azar** case(s) were reported from KAILALI (1 case) and SALYAN (1 case).

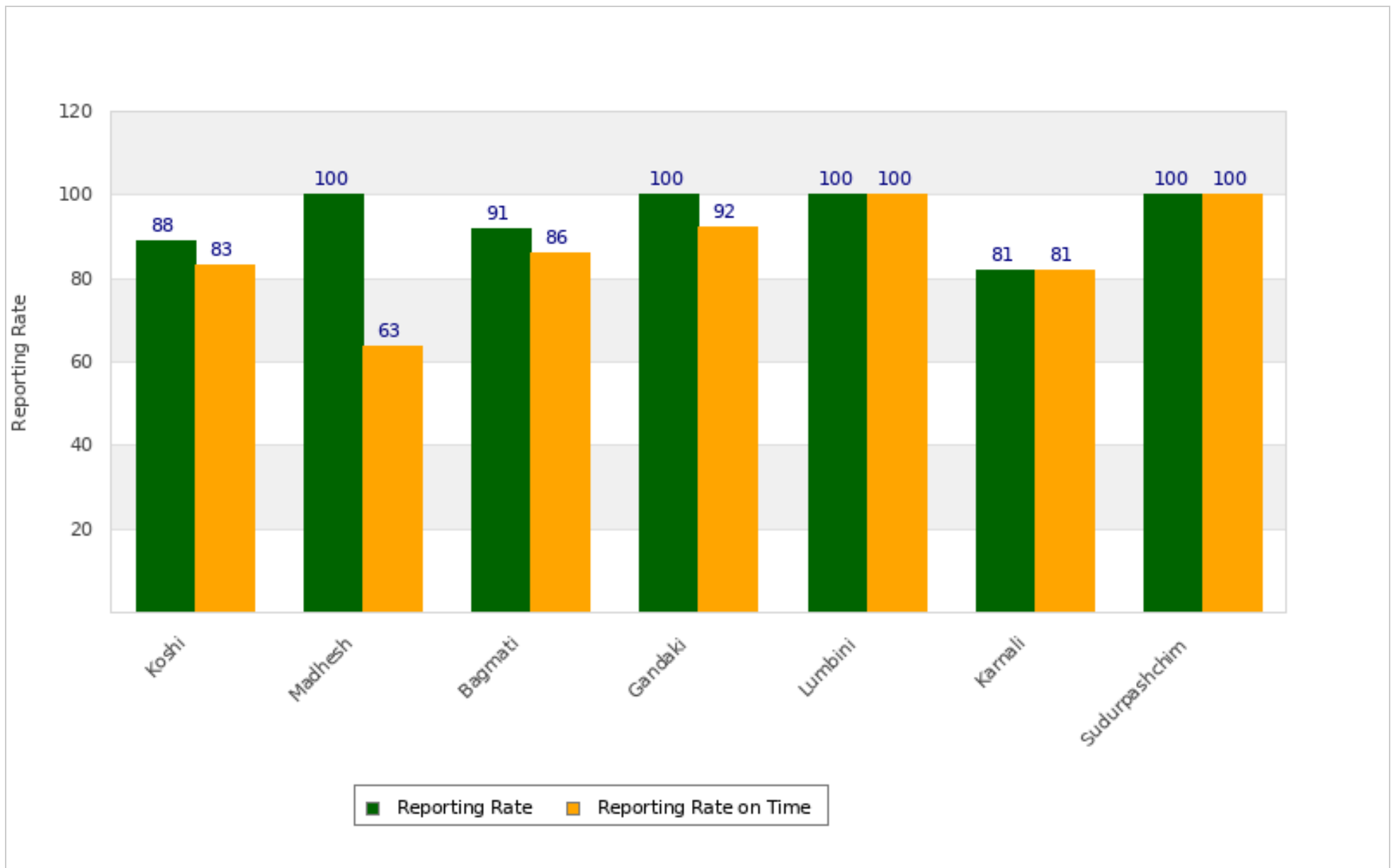
**Cholera** case(s) were reported from CHITAWAN (1 case).

Most of the **Scrub Typhus** cases were reported from DADEL DHURA (29 cases), SANKHUWASABHA (29 cases), OKHALDHUNGA (9 cases), BAITADI (8 cases) and ACHHAM (5 cases).

Most of the **Enteric Fever** cases were reported from DADEL DHURA (10 cases), KATHMANDU (5 cases), PARSA (5 cases), SYANGJA (4 cases) and KASKI (3 cases).

Most of the **Influenza Like Illness** cases were reported from SINDHUPALCHOK (24 cases), ACHHAM (20 cases), RUKUM WEST (14 cases), BHAKTAPUR (7 cases) and LALITPUR (6 cases).

### Province Reporting Status (Week 27, 2024)



**Acknowledgement:** The Epidemiology and Disease Control Division (EDCD) highly acknowledges the contribution from all the sentinel sites, medical recorders, EWARS focal persons, rapid response team members and technical support from WHO and GIZ for preparation of this bulletin.

**Note:** This bulletin is also available at the EDCD website. Other information can also be accessed at the website [www.edcd.gov.np](http://www.edcd.gov.np). If you have difficulty reading this bulletin, you can access it [online](#).