

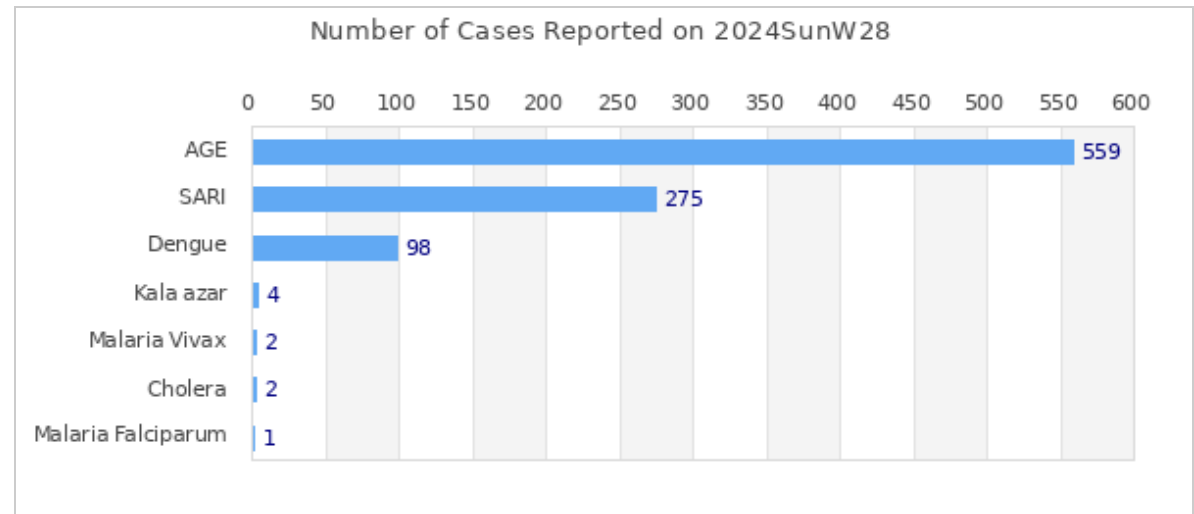


## Highlights

Among the reported diseases, **AGE** is the leading cause of morbidity in Week 28 with **559** reported cases.

Overall reporting rate of Week 28 is **94.1%** with 111 out of 118 sentinel sites reporting to EWARS.

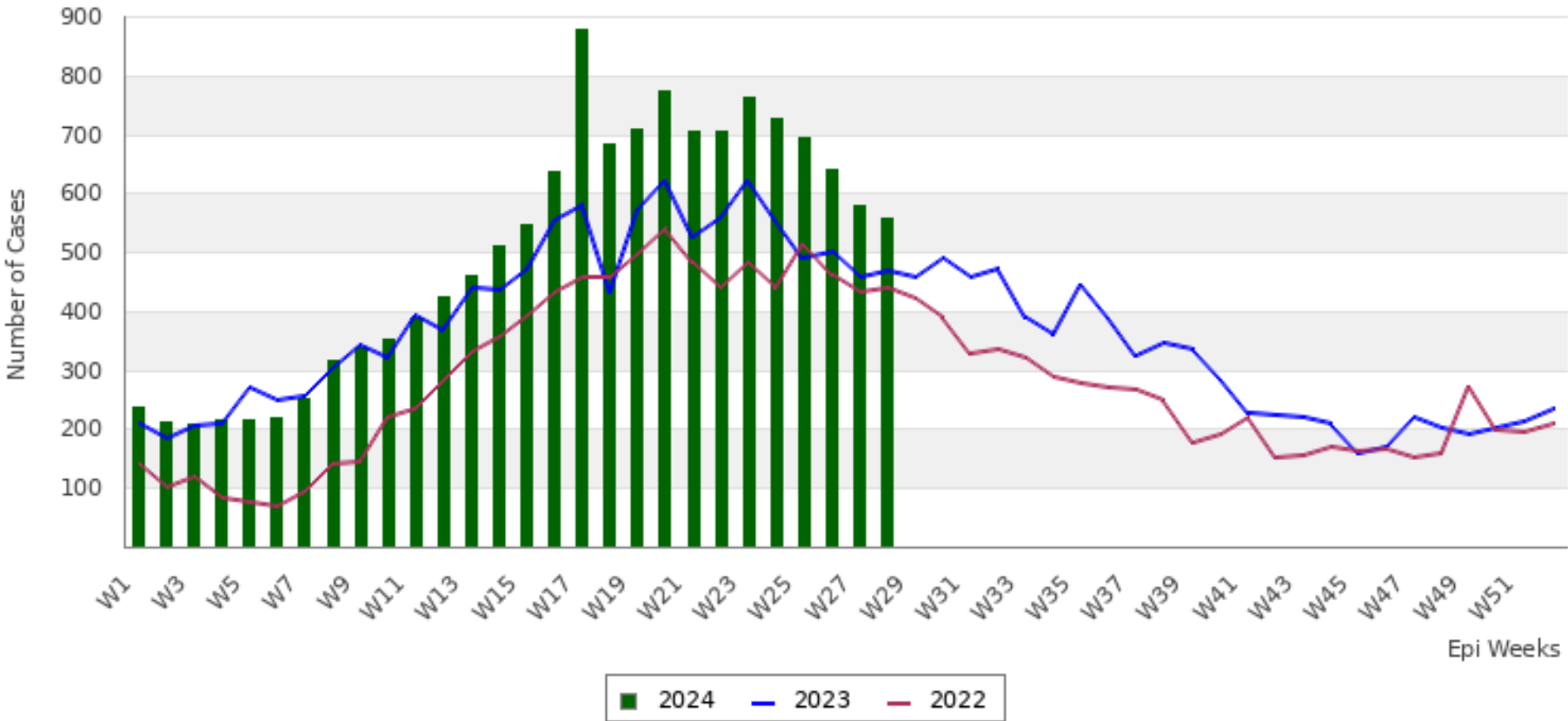
â€¢ 1003577 cases of Corona Virus disease (COVID-19) have been confirmed in Nepal, of which 991509 cases have been recovered so far

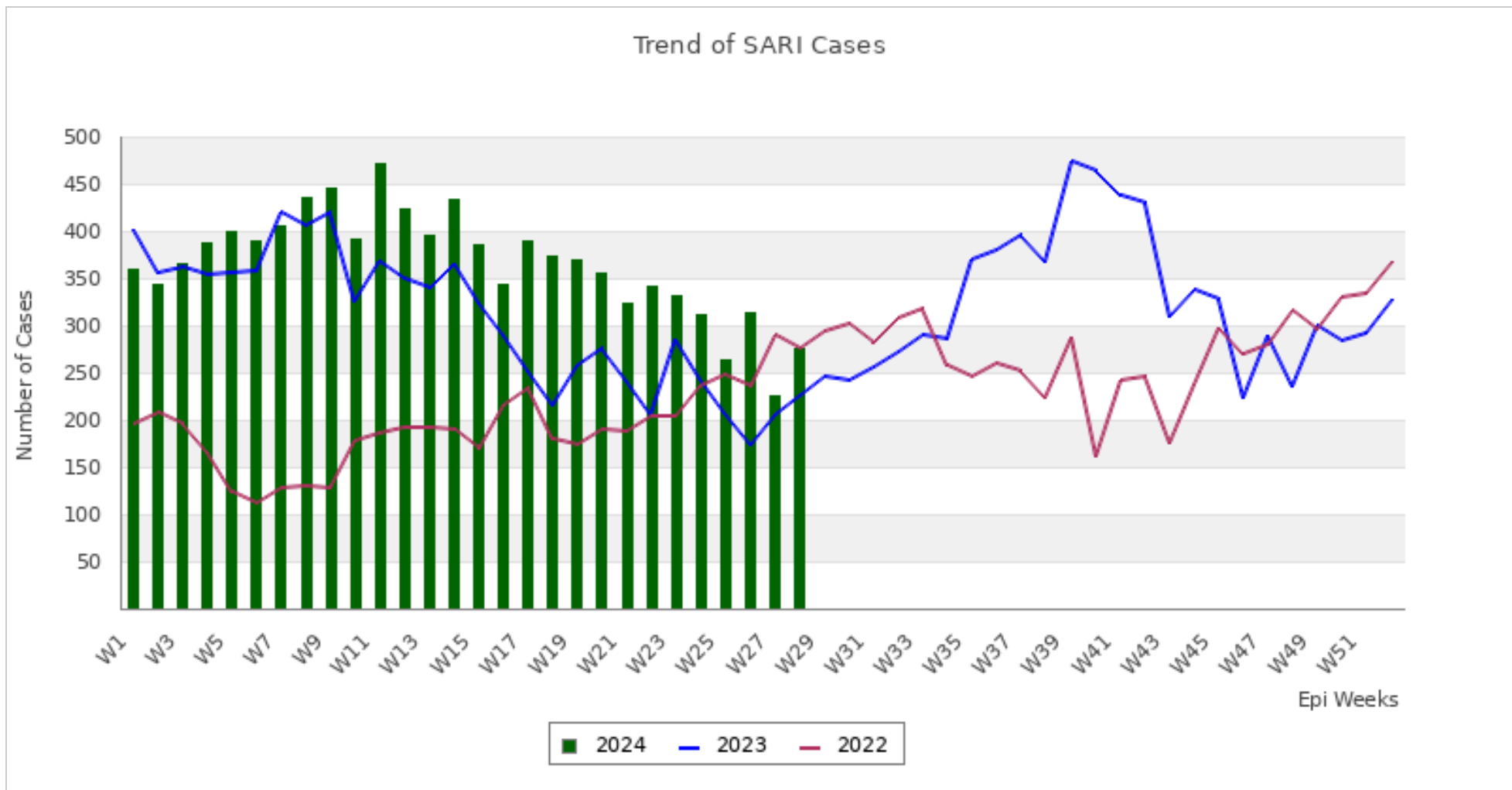


This bulletin includes data since January 2022 till date, including comparison of the same period last two year. Since, May 2019, 36 new sentinel sites (including public hospitals, private hospitals, and medical colleges) were added and was gradually oriented and started reporting, thus increasing the number of reporting sites. The current number of sentinel sites is 118.

## Trend of Outbreak Prone Diseases/Syndromes

Trend of AGE Cases





### Comparative Analysis by Disease/Syndrome (Week 28, 2024)

Disease	Week 27, 2024 (Previous Week)	Week 28, 2024 (This Week)	Change in No. of Cases	Week 28, 2023 (Last Year Same Week)
AGE	580	559	-21 <span style="color: green;">■</span>	467
SARI	225	275	50 <span style="color: red;">■</span>	225
Cholera	1	2	1 <span style="color: red;">■</span>	2
Malaria Vivax	5	2	-3 <span style="color: green;">■</span>	2
Malaria Falciparum	1	1	0 <span style="color: gray;">■</span>	0
Dengue	106	98	-8 <span style="color: green;">■</span>	741

<b>Kala azar</b>	2	4	2	■	5
<b>Scrub Typhus</b>	147	112	-35	■	35
<b>Enteric Fever</b>	62	92	30	■	99
<b>Influenza Like Illness</b>	101	79	-22	■	25

■ Increase in number of cases     
■ Decrease in number of cases     
■ No change in number of cases

### Summary Observation

Most of the **AGE** cases were reported from KATHMANDU (68 cases), PARSA (32 cases), KAILALI (29 cases), PALPA (22 cases) and LALITPUR (22 cases).

Most of the **SARI** cases were reported from KATHMANDU (24 cases), KASKI (18 cases), MORANG (17 cases), KAILALI (11 cases) and SUNSARI (11 cases).

Most of the **Dengue** cases were reported from KATHMANDU (17 cases), KAVREPALANCHOK (10 cases), KASKI (6 cases), LAMJUNG (5 cases) and MAKWANPUR (5 cases).

**Malaria Vivax** case(s) were reported from KANCHANPUR (1 case) and DADEL DHURA (1 case).

**Malaria Falciparum** case(s) were reported from RAUTAHAT (1 case).

Most of the **Kala azar** cases were reported from DOTI (1 case), SURKHET (1 case), LALITPUR (1 case) and MORANG (1 case).

**Cholera** case(s) were reported from KANCHANPUR (1 case) and KATHMANDU (1 case).

Most of the **Scrub Typhus** cases were reported from ACHHAM (18 cases), DADEL DHURA (12 cases), SURKHET (7 cases), LAMJUNG (7 cases) and OKHALDHUNGA (6 cases).

Most of the **Enteric Fever** cases were reported from DADEL DHURA (13 cases), PARSA (9 cases), SUNSARI (7 cases), ROLPA (6 cases) and OKHALDHUNGA (5 cases).

Most of the **Influenza Like Illness** cases were reported from ACHHAM (25 cases), BAITADI (20 cases), RUKUM WEST (10 cases), BAJURA (4 cases) and LALITPUR (4 cases).

### Province Reporting Status (Week 28, 2024)



**Acknowledgement:** The Epidemiology and Disease Control Division (EDCD) highly acknowledges the contribution from all the sentinel sites, medical recorders, EWARS focal persons, rapid response team members and technical support from WHO and GIZ for preparation of this bulletin.

**Note:** This bulletin is also available at the EDCD website. Other information can also be accessed at the website [www.edcd.gov.np](http://www.edcd.gov.np). If you have difficulty reading this bulletin, you can access it [online](#).