

# Early Warning and Reporting System (EWARS)- Weekly Bulletin: Nepal

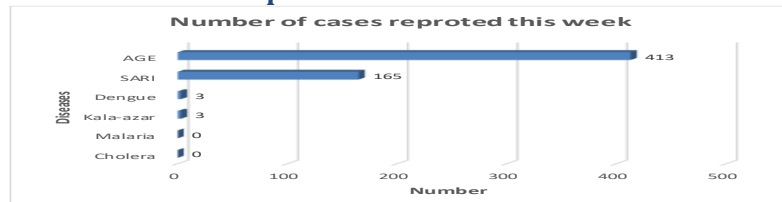
## 21<sup>st</sup> Epidemiological Week, 2022

### 5<sup>th</sup> June, 2022

#### Highlights

- 979199 cases of Coronavirus disease (COVID-19) have been confirmed in Nepal, of which 967137 cases have been recovered so far.
- Of the reported cases, Acute Gastro-Enteritis (AGE) is the leading cause of morbidity in week 21.

#### Number of cases reported for each disease this week

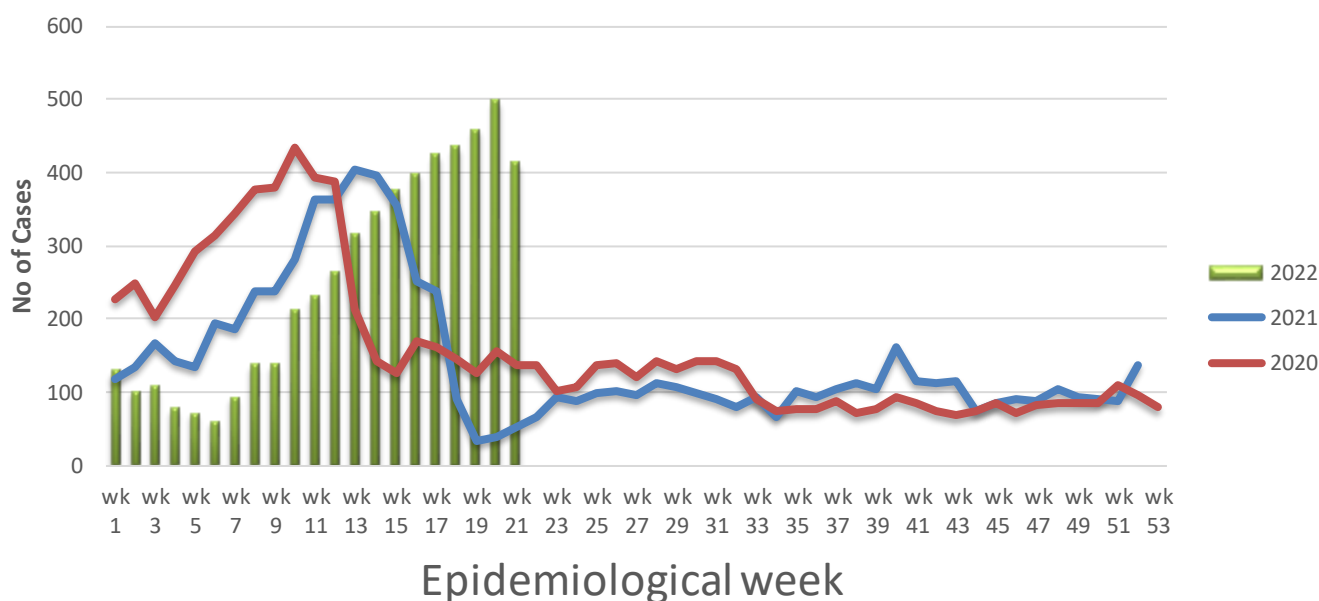


**Note:** This bulletin includes data since January 2021 till date, including comparison of the same period last year. Since, May 2019, 36 new sentinel sites (including public hospitals, private hospitals, and medical colleges) were added and were gradually oriented and started reporting, thus increasing the number of reporting sites. The current number of sentinel sites is 118.

### 1. Acute Gastro-Enteritis (AGE)

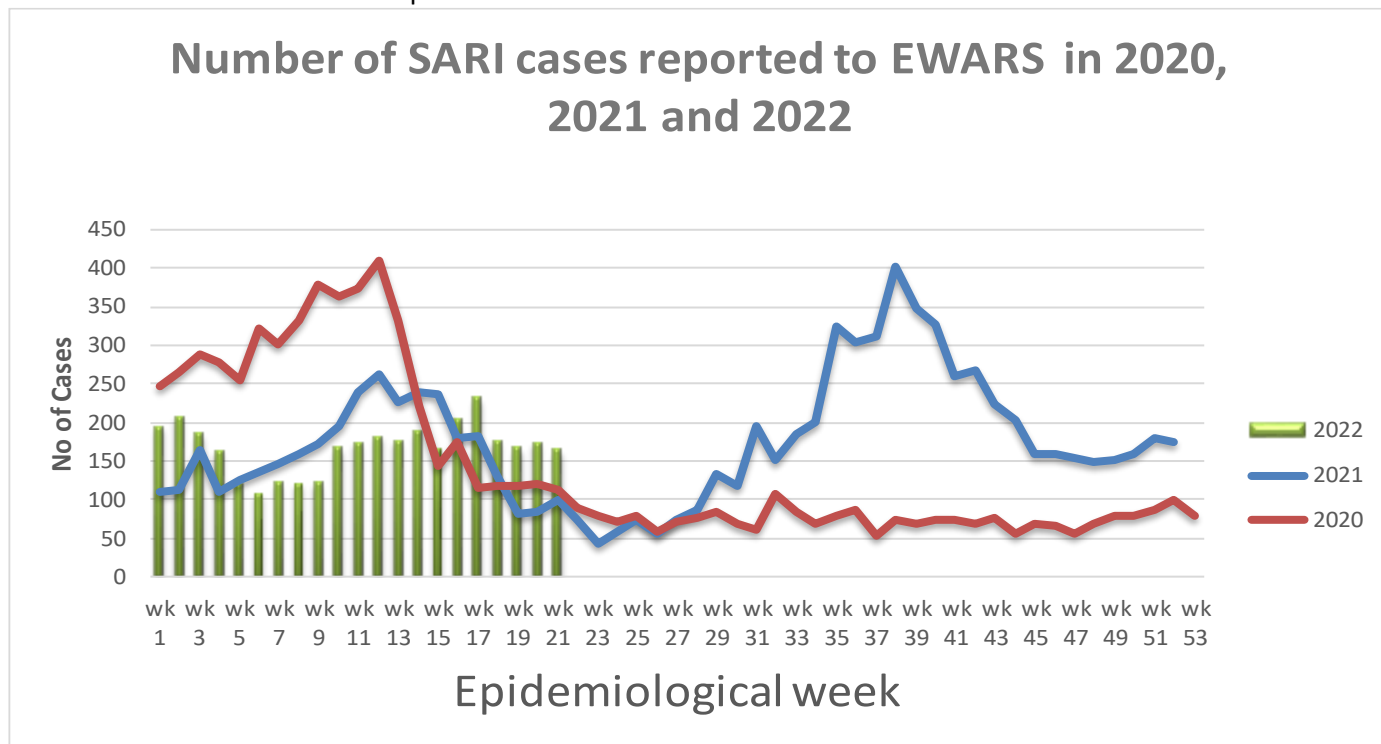
- 413 cases of AGE were reported this week. Most of these cases were reported from Kapilbastu (49 cases), Dang(29 cases), Parsa (28 cases), Rukum West and Rupandehi (25 cases from each districts), Bara (24 cases), Kathmandu (19 cases), Lalitpur (18 cases), Bhaktapur (17 cases), Morang (13 cases), Kanchanpur (12 cases), Bajhang and Lamjung (10 cases from each districts), Doti (9 cases), Okhaldhunga, Sankhuwasabha, and Sunsari (8 cases from each districts), Ilam, Bardiya, and Jumla (7 cases from each districts), Kaski (5 cases), Kavrepalanchok, and Baitadi (5 cases from each districts), Myagdi, Gulmi, Dolakha, and Jhapa (4 cases from each districts).
- 55 cases of AGE were reported this week in 2021.

### Number of AGE cases reported to EWARS in 2020, 2021 and 2022



## 2. Severe Acute Respiratory Infection (SARI)

- 165 cases of SARI were reported this week. Most of these cases were reported from Suekhet (29 cases), Morang (29 cases), Jhapa (13 cases), Sunsari (9 cases), Dailekh, and Udayapur (8 cases from each districts), Bajhang, Dhankuta, and Lalitpur (5 cases from each districts), Salyan, Darchula, Palpa, Saptari, and Syangja (4 cases from each districts).
- 107 cases of SARI were reported this week in 2021.



## 3. Malaria

- Zero case of malaria was reported this week.
- Zero case of malaria was reported this week in 2021.

## 4. Dengue

- Three cases of dengue were reported this week; one each case was reported from Parbat, Kanchanpur, and Bajura districts.
- Six case of dengue were reported this week in 2021.

## 5. Kala-azar

- Three cases of kala-azar were reported this week; two case were reported from Kalikot district, and one case from Khotang district.
- Zero case of kala-azar was reported this week in 2021.

## 6. Cholera

- Zero case of Cholera was reported this week
- Zero case of Cholera was reported this week in 2021.

## Other diseases

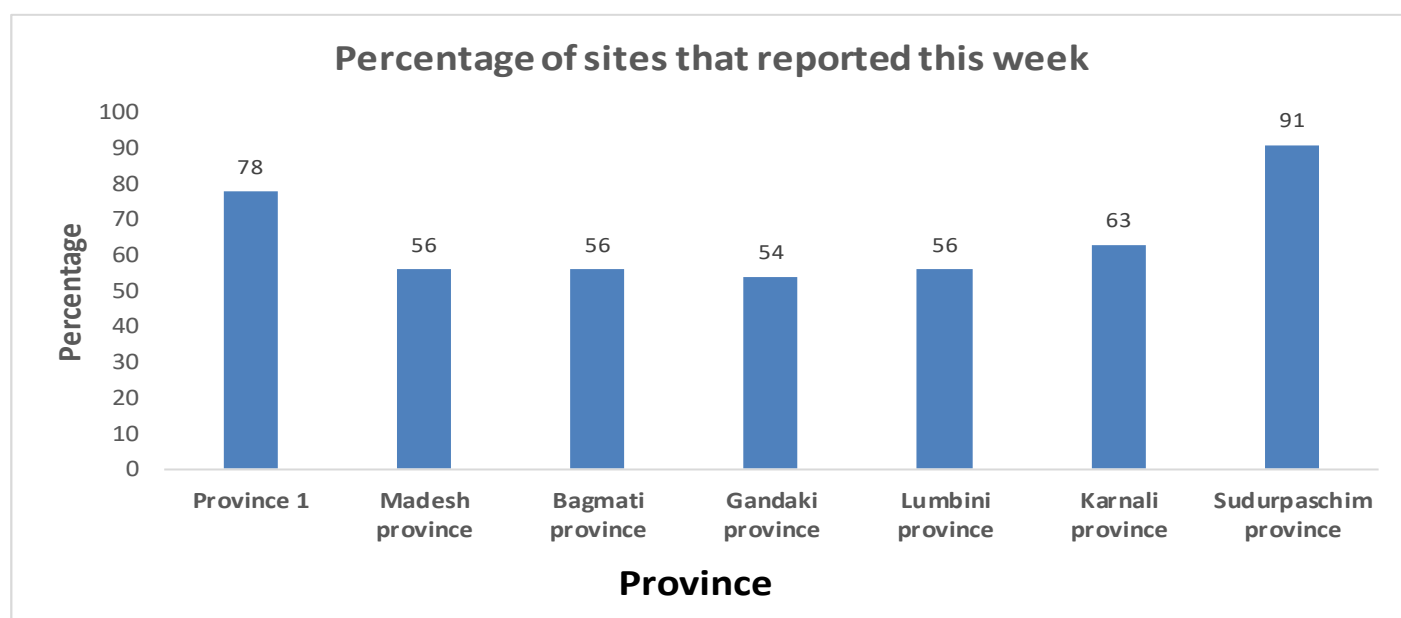
### Scrub typhus

- 23 cases of scrub typhus were reported this week. Most of the cases were reported from Darchula (4 cases), Palpa (3 cases), Bardiya, Okhaldhunga, Bajhang, Gorkha, and Syangja (2 cases from each districts).
- 13 cases of scrub typhus were reported this week in 2021.

**Table: Comparison with previous week by diseases, 2022**

| Disease   | Week 21 | Week 20 |
|-----------|---------|---------|
| AGE       | 413     | 498     |
| SARI      | 165     | 174     |
| Malaria   | 0       | 0       |
| Kala-azar | 3       | 3       |
| Dengue    | 3       | 3       |
| Cholera   | 0       | 0       |

### Province wise reporting status:



**Acknowledgement:** The Epidemiology and Disease Control Division (EDCD) highly acknowledges the contribution from all the sentinel sites, medical recorders, EWARS focal persons, rapid response team members and technical support from WHO and GIZ for preparation of this bulletin.

**Note:** This bulletin is also available at the EDCD website (please click [here](#)). Other information can also be accessed at the website [www.edcd.gov.np](http://www.edcd.gov.np). Thank you.



**Government of Nepal**  
**Ministry of Health and Population**  
**Department of Health Services**  
**Epidemiology and Disease Control Division**  
**Kathmandu, Nepal**