

**Early Warning and Reporting System (EWARS)**

# **Weekly Bulletin**

**(32<sup>nd</sup> Epidemiological Week)**

**19 August, 2018**



**Government of Nepal**  
**Ministry of Health and Population**  
**Department of Health Services**  
**Epidemiology and Disease Control Division**  
**Kathmandu, Nepal**  
[ewarsedcd@gmail.com](mailto:ewarsedcd@gmail.com)

This bulletin includes the updates from the Early Warning Reporting System (EWARS). It includes data since January 2018 till date, including comparison of same period during last year.

## The Early Warning and Reporting System (EWARS)

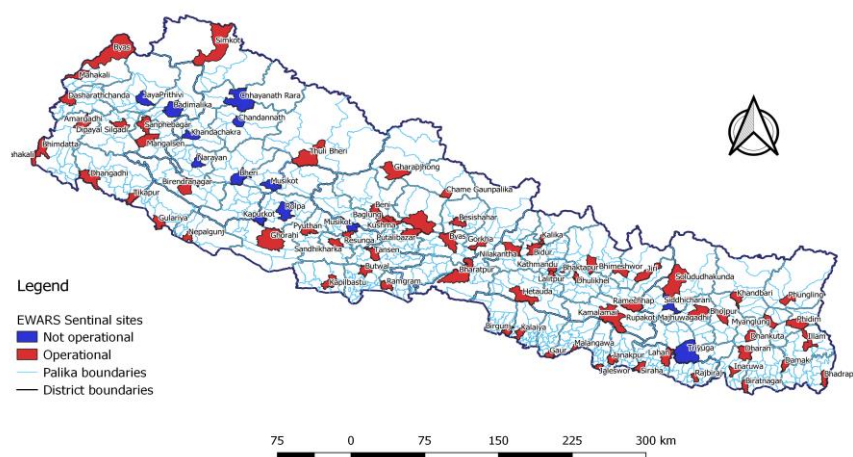
### Highlights

- **Kala-azar:** One case of Kala azar is reported this week from Lumbini Zonal Hospital, Rupandehi and the case is from Airawati Rural Municipality of Pyuthan District.
- **Malaria:** One case of Malaria (*Plasmodium Vivax*) is reported this week from Tikapur Hospital, Kailali and the case is from Tikapur Municipality of Kailali district.
- **Dengue:** One death from Dengue is reported this week from Lumbini Zonal Hospital, Rupandehi and the deceased was from Tilottama Municipality of Rupandehi district. The patient was admitted and treated at CRIMSON Hospital Manigram. Similarly additional six cases of Dengue are reported, 3 from Lumbini Zonal Hospital, Rupandehi, two from Mechi Zonal Hospital, Jhapa and one from Seti Zonal Hospital, Kailali. The cases are from Arghakhanchi, Nawalparasi, Palpa, Ilam, Jhapa and Darchula district.
- **Scrub Typhus:** Thirty seven cases of Scrub Typhus are reported this week. The cases are from Palpa, Syangja, Baitadi, Chitwan, Dadeldhura, Dhading, Gorkha, Gulmi, Jajarkot, Kapilbastu, Lamjung, Nuwakot, Ramechhap, Rupandehi and Syangja district.
- **AGE:** One death from AGE is reported this week from Lumbini Zonal Hospital, Rupandehi and the deceased was from Butwal Sub Metropolitan of Rupandehi district.
- **Leptospirosis:** One death from Leptospirosis is reported this week from Lumbini Zonal Hospital, Rupandehi and the deceased was from Kapilbastu Municipality of Kapilbastu district. The patient was receiving treatment at CRIMSON Hospital, Manigram.

The EWARS was established in 1997 to strengthen the flow of information on vector-borne and other outbreak prone infectious diseases from the district to Epidemiology and Disease Control Division (EDCD) and Vector-Borne Disease Research and Training Center (VBDRTC), Hetauda. Rapid Response Teams (RRTs) can be mobilized at short notice to facilitate prompt outbreak response at Central, Regional and District level. RRTs can also support local level health institutions for investigation and outbreak control activities.

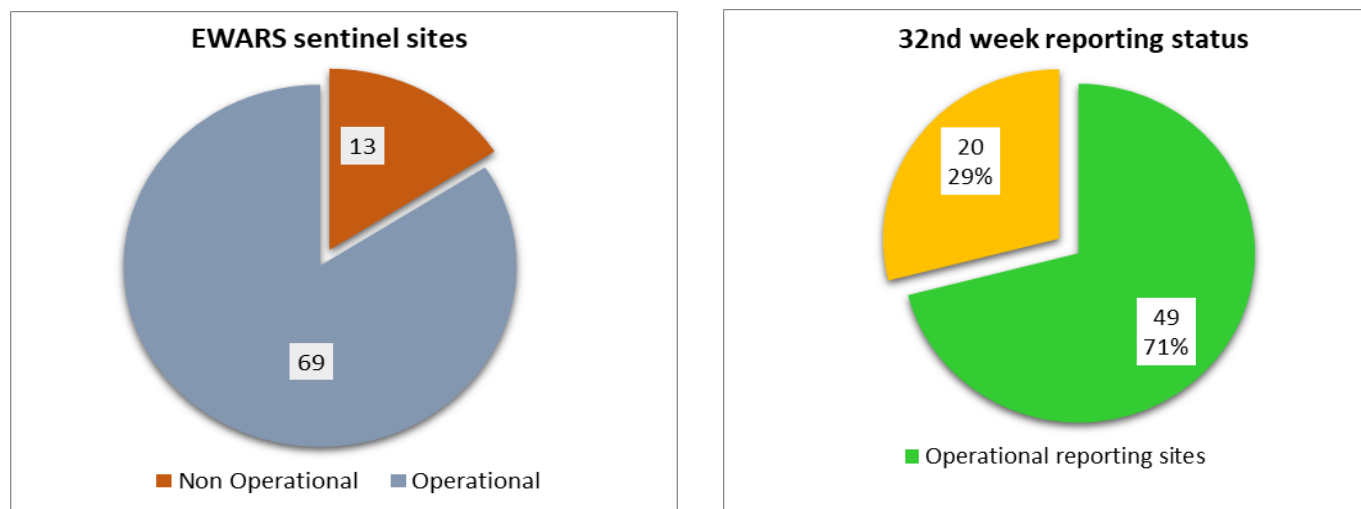
This information system is hospital-based and is currently operational in 68 hospitals (out of 82 sites) throughout Nepal (Figure 1). So far, the EWARS mainly focuses on the **weekly reporting** of number of cases and deaths (including "zero" reports) of six priority diseases/syndromes—Malaria, Kala-azar, Dengue, Acute Gastroenteritis (AGE), Cholera and Severe Acute Respiratory Infection (SARI), and other epidemic potential diseases/syndromes (like enteric fever). It equally focuses on **immediate reporting** (to be reported within 24 hours of diagnosis) of one confirmed case of Cholera, Kala-azar severe and complicated Malaria and one suspect/clinical case of Dengue as well as 5 or more cases of AGE and SARI from the same geographical locality in one week period.

EWARS Sentinel Sites



## Reporting Status

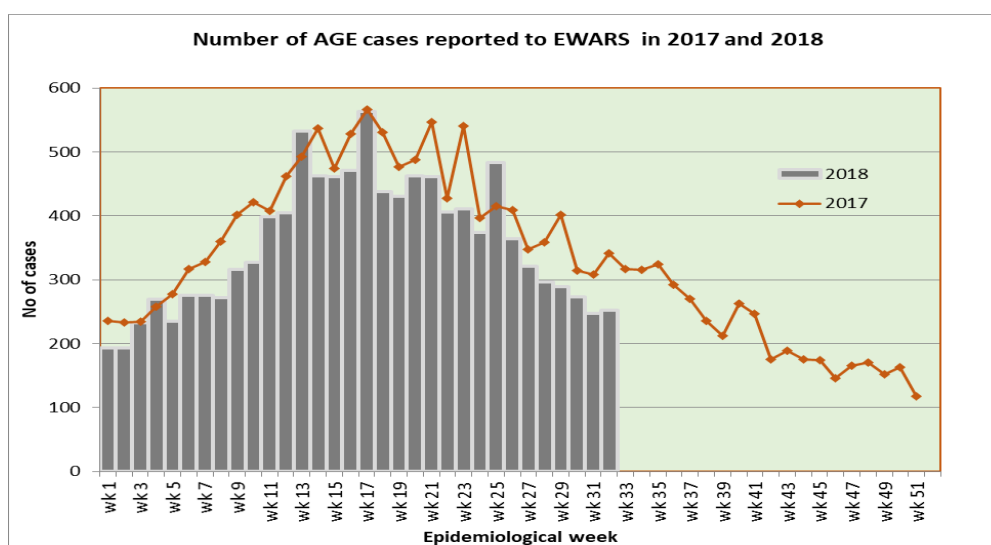
Out of 69 functional EWARS sentinel sites, report was received from 49 sentinel sites (71 percent) whereas 20 sentinel sites did not report in 32<sup>nd</sup> Epidemiological week of 2018. The reporting coverage is same as compared to previous week.



### 1.1 Acute Gastro-Enteritis and Cholera

252 cases of AGE are reported in 32<sup>nd</sup> epidemiological week of 2018. Among 252 cases, the majority of cases are from Achham (26 cases), Kailali (17 cases), Dolakha (16 cases), Dhanusha (16 cases), Saptari (15 cases), Kanchanpur (15 cases), Jhapa (11 cases), Kapilbastu (10 cases), Makwanpur (9 cases), Rupandehi (8 cases) and Kathmandu (8 cases) district. The number of AGE cases reported in 32<sup>nd</sup> week this year did not exceed the number of AGE cases reported in the same week last year (341 cases).

One death from AGE is reported this week from Lumbini Zonal Hospital, Rupandehi and the deceased was from Butwal Sub Metropolitan of Rupandehi district. Twelve deaths from AGE are reported so far this year. Twenty deaths from AGE were reported in 2017.

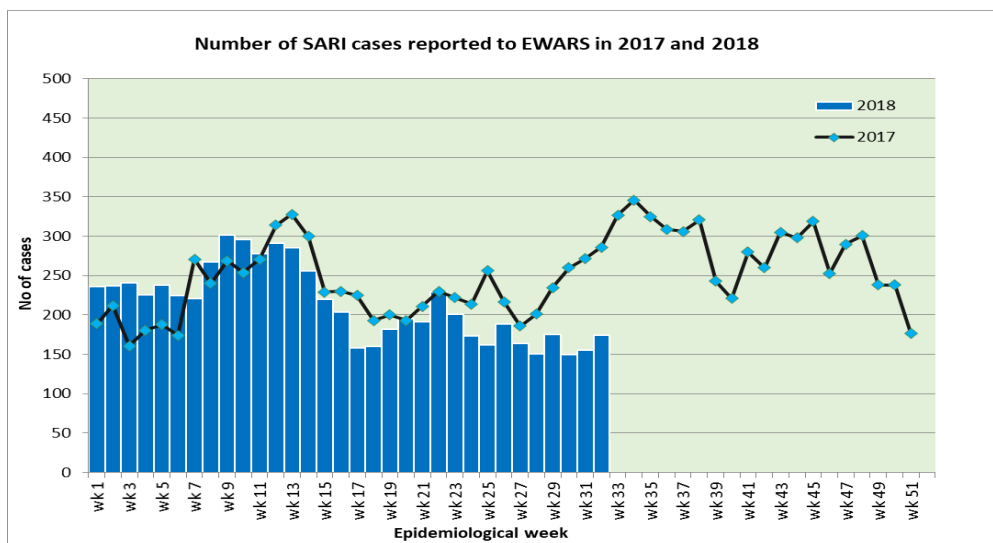


**Cholera:** A total of 3 cases of Cholera have been reported this year. The samples are confirmed positive by National Public Health Laboratory and the cases are from Nuwakot, Kathmandu and Lalitpur district.

## 1.2 Severe Acute Respiratory Infection (SARI)

174 cases of SARI are reported in 32<sup>nd</sup> epidemiological week of 2018. The cases of SARI reported this week did not exceed the number reported in the same week last year (286 cases). Among 174 reported cases, the majority of cases are from Lalitpur (20 cases), Jhapa (20 cases), Morang (15 cases), Kathmandu (11 cases), Rupandehi (11 cases), Ilam (8 cases), Sindhuli (7 cases), Kailali (6 cases) and Dhankuta (6 cases) district.

No death from SARI is reported this week. 29 deaths from SARI are reported so far this year. Eighty two deaths from SARI were reported in 2017.



## 1.3 Enteric Fever

69 cases of Enteric fever are reported this week including 8 from Dhankuta, 8 from Sindhuli, 6 from Kaski, 4 from Ilam, 4 from Lamjung and 4 from Siraha district. No death from Enteric fever is reported so far this year. Three deaths from Enteric Fever were reported in 2017.

## 1.4 Malaria

One case of Malaria (*Plasmodium Vivax*) is reported this week from Tikapur Hospital, Kailali and the case is from Tikapur Municipality of Kailali district.

## 1.5 Dengue

One death from Dengue is reported this week from Lumbini Zonal Hospital, Rupandehi and the deceased was from Tilottama Municipality of Rupandehi district. The patient was admitted and treated at CRIMSON Hospital Manigram.

Similarly additional six cases of Dengue are reported this week, 3 from Lumbini Zonal Hospital, Rupandehi, two from Mechi Zonal Hospital, Jhapa and one from Seti Zonal Hospital, Kailali. The cases are from Arghakhanchi, Nawalparasi, Palpa, Ilam, Jhapa and Darchula district.

Forty two cases of Dengue including two death are reported so far this year. 1201 cases of dengue are reported through EWARS in 2017.

## 1.6 Kala-azar

One case of Kala azar is reported this week from Lumbini Zonal Hospital, Rupandehi and the case is from Airawati Rural Municipality of Pyuthan District.

One Hundred thirteen cases of Kala azar including two deaths are reported so far this year. Two hundred twelve cases of Kala-azar were reported through EWARS in 2017.

## 1.7 Scrub Typhus

Thirty seven cases of Scrub Typhus are reported this week, 16 from United Mission Hospital, Palpa, 6 from Lumbini Zonal Hospital, Rupandehi, Six from Kanti Children Hospital, Kathmandu, Five from District Hospital, Dhading and two each from Sukraraj Tropical and Infectious Disease Hospital, Teku and Seti Zonal Hospital, Kailali. The cases are from Palpa, Syangja, Baitadi, Chitwan, Dadeldhura, Dhading, Gorkha, Gulmi, Jajarkot, Kapilbastu, Lamjung, Nuwakot, Ramechhap, Rupandehi and Syangja district.

One Hundred forty seven cases of scrub typhus including one death are reported so far this year. 451 cases of Scrub Typhus were reported through EWARS in 2017.

### Timeliness & completeness of reporting from sentinel sites:

Code	Sentinel Sites	Timeliness (This Week)	Completeness (%)	Site Code	Sentinel Sites	Timeliness (This Week)	Completeness (%)
101	Mechi ZH, Jhapa	On Time	100	136	DH, Illam	On Time	100
102	Koshi ZH, Morang	On Time	100	137	Dhulikhel H., Kavre	On Time	100
103	DH, Sunsari	On Time	100	138	DH, Solukhumbu	On Time	96
104	BPKIHS, Dharan	No Reporting	96	139	DH, Dolpa	No Reporting	0
105	DH, Dhankuta	On Time	100	140	DH, Humla	No Reporting	0
106	SZH, Saptari	On Time	53	201	L. Comm DH, Lamjung	On Time	100
107	RKUP Lahan, Siraha	On Time	100	202	DH, Dhading	On Time	83
108	DH, Siraha	No Reporting	78	203	DH, Ramechhap	On Time	100
109	JZH, Dhanusha	On Time	100	204	Bhaktapur Hospital	On Time	10
110	DH, Rautahat	No Reporting	10	205	Patan Hospital, Lalitpur	On Time	100
111	DH, Bara	No Reporting	96	206	DH, Gorkha	No Reporting	24
112	NSRH, Parsa	On Time	92	207	DH Trishuli, Nuwakot	No Reporting	12
113	DH, Makwanpur	On Time	100	208	Charikot PHCC, Dolakha	On Time	96
114	Bharatpur Hospital, Chitwan	On Time	100	209	Jiri H, Dolakha	On Time	100
115	Kanti CH, Kathmandu	On Time	100	210	DH, Syangja	On Time	85
116	STIDH, Kathmandu	On Time	100	211	DH, Tanahun	No Reporting	10
117	UMH, Palpa	On Time	100	212	PAHS/WRH, Kaski	On Time	100
118	PCH, Nawalparasi	No Reporting	96	213	DH, Myagdi	On Time	60
119	PBH, Kapilbastu	On Time	100	214	DH, Gulmi	No Reporting	74
120	LZH, Rupandehi	On Time	100	215	DZH, Baglung	On Time	100
121	RSRH Dang	On Time	100	216	DH, Parbat	On Time	60
122	MWRH, Surkhet	On Time	100	217	DH, Arghakhanchi	On Time	22
123	BZH, Banke	No Reporting	68	218	DH, Manang	On Time	96
124	SZH, Kailali	On Time	70	219	DH, Mustang	On Time	68
125	MZH, Kanchanpur	On Time	100	220	DH, Pyuthan	No Reporting	88

126	DH, Doti	On Time	100	229	DH, Achham	On Time	100
127	DH, Bardiya	On Time	100	230	DH, Baitadi	On Time	80
128	DH, Mahottari	No Reporting	10	231	DH, Darchula	On Time	56
129	DH, Dadeldhura	No Reporting	0	234	DH, Taplejung	No Reporting	38
130	DH, Rasuwa	No Reporting	88	235	DH, Panchthar	No Reporting	80
131	DH, Sankhuwasabha	On Time	40	236	DH, Terhathum	No Reporting	93
132	AMDA Hosp., Jhapa	On Time	100	237	DH, Bhojpur	On Time	100
133	DH, Chautara	On Time	100	238	DH, Khotang	No Reporting	30
134	DH, Sarlahi	No Reporting	96	301	Bayalpata Hosp., Achham	On Time	100
135	DH, Sindhuli	On Time	100	302	Tikapur Hospital, Kailali	On Time	60
						<b>Excellent (&gt;80)</b>	
						<b>Satisfactory (50-79)</b>	
						<b>Bad(&lt;50)</b>	

### Acknowledgement

The Epidemiology and Disease Control Division highly acknowledges the contribution from all the medical recorders, EWARS focal persons, rapid response team members and support from WHO for preparation of this bulletin.

**Note:** EWARS reporting form (in MS Excel format) is available at EDCD's official website [www.edcd.gov.np](http://www.edcd.gov.np). This bulletin is also available at the website.