

Early Warning and Reporting System (EWARS)- Weekly Bulletin: Nepal

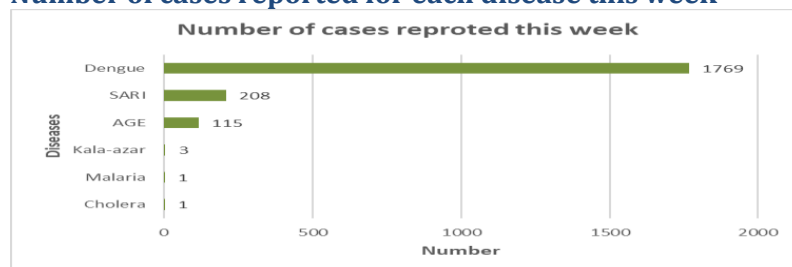
39th Epidemiological Week, 2022

9th October, 2022

Highlights

- 999886 cases of Coronavirus disease (COVID-19) have been confirmed in Nepal, of which 987298 cases have been recovered so far.
- Of the reported cases, Dengue is the leading cause of morbidity in week 39.

Number of cases reported for each disease this week

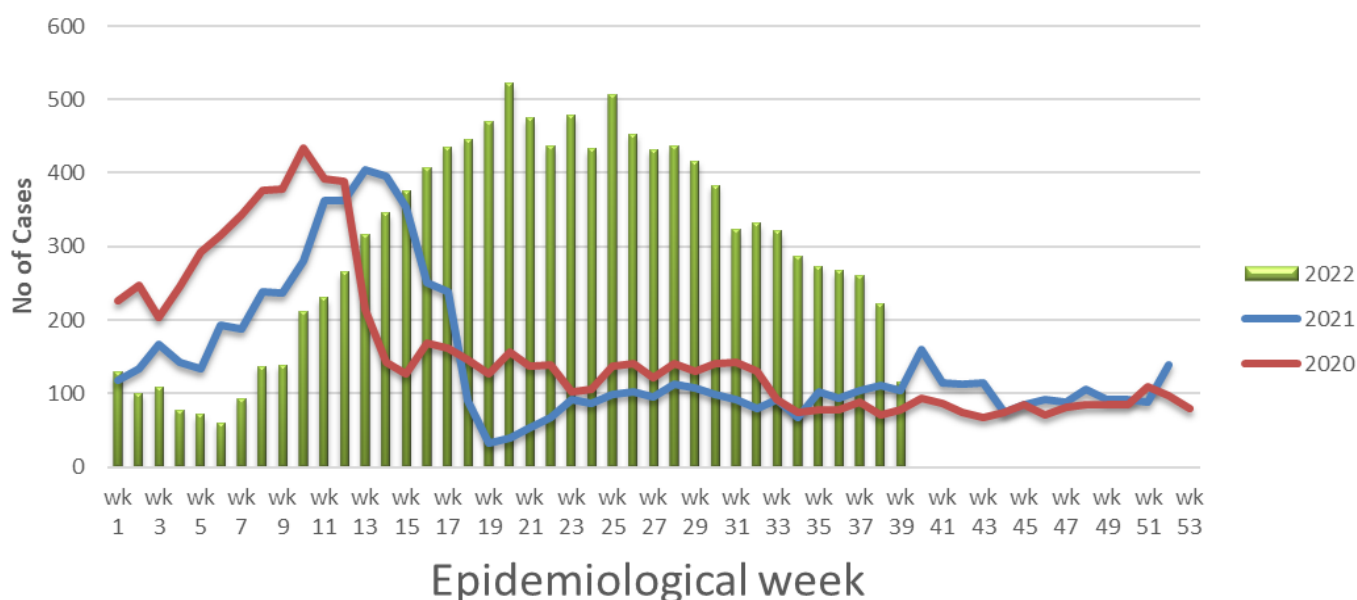


Note: This bulletin includes data since January 2021 till date, including comparison of the same period last two year. Since, May 2019, 36 new sentinel sites (including public hospitals, private hospitals, and medical colleges) were added and were gradually oriented and started reporting, thus increasing the number of reporting sites. The current number of sentinel sites is 118.

1. Acute Gastro-Enteritis (AGE)

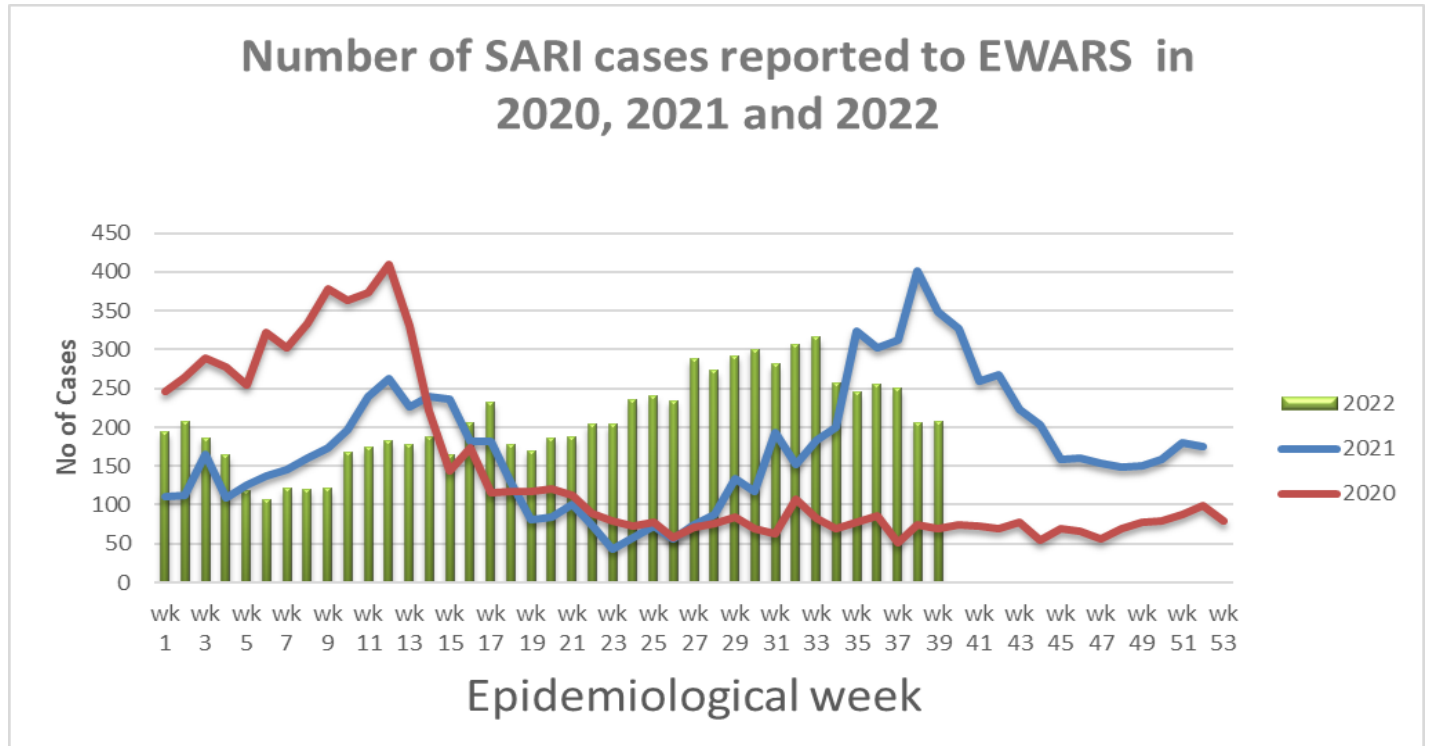
- 115 cases of AGE were reported this week. Most of these cases were reported from Parsa (23 case), Kathmandu (11 case), Bara (8 case), Lalitpur, Kapilbastu, and Darchula (6 case from each district), Rukum West, and Siraha (4 case from each district).
- 116 cases of AGE were reported this week in 2021.

Number of AGE cases reported to EWARS in 2020, 2021 and 2022



2. Severe Acute Respiratory Infection (SARI)

- 208 cases of SARI were reported this week. Most of these cases were reported from Kathmandu (38 case), Rupandehi (27 case), Jhapa (24 case), Morang (12 case), Dhankuta, and Dhading (8 case from each district), Bhaktapur, and Bara (7 case from each district), Kailali (6 case), Darchula, Sunsari, Parsa, and Ramechhap (5 case from each district), Sindhupalchok (4 case).
- 373 cases of SARI were reported this week in 2021.



3. Malaria

- One case of malaria (M. Vivax 1) was reported this week; the case was reported from Pyuthan district.
- One case of malaria was reported this week in 2021.

4. Kala-azar

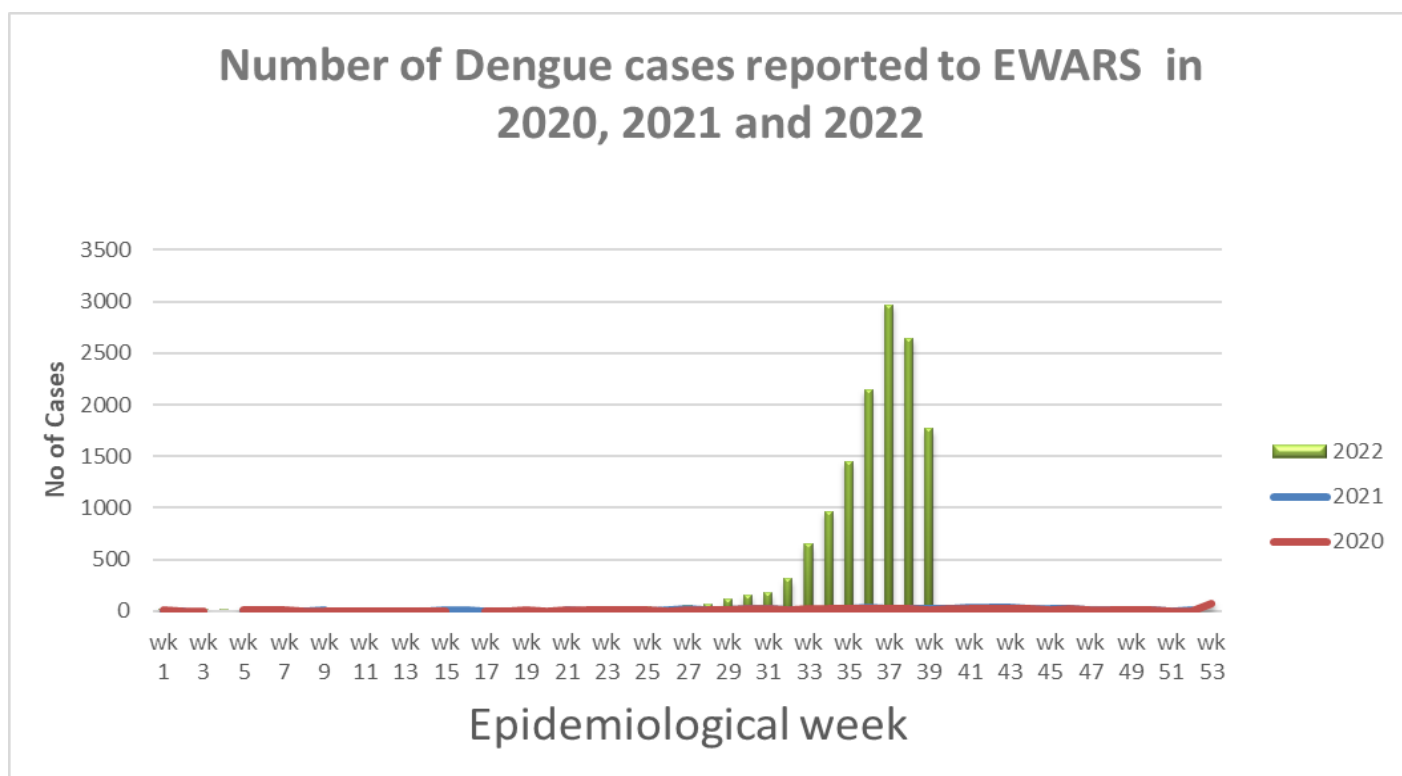
- Three cases of kala-azar were reported this week; one each case was reported from Panchthar, Kailali, and Makwanpur.
- 10 cases of kala-azar were reported this week in 2021.

5. Cholera

- One case of Cholera was reported this week; the case was reported from Kathmandu district.
- Zero case of Cholera was reported this week in 2021.

6. Dengue

- 1769 cases of dengue were reported this week. Most of these cases were reported from Kathmandu (729 case), Lalitpur (139 case), Dhading (110 case), Rupandehi (64 case), Darchula (52 case), Kailali (47 case), Dang (40 case), Dhankuta (25 case), Makwanpur (24 case), Kapilbastu, Bhaktapur, and Khotang (22 case from each district), Parbat, and Nuwakot (21 case from each district), Kaski, and Ramechhap (20 case from each district), Kanchanpur (19 case), Nawalparasi East (18 case), Sindhupalchok (16 case), Kavrepalanchok, Baglung, and Palpa (15 case from each district), Parsa (14 case), Udayapur, Sunsari, and Tanahu (13 case from each district), Chitawan (12 case), Lamjung, Jhapa, Panthar, and Sankhuwasabha (11 case from each district), Bara, Gorkha, and Morang (10 case from each district), Banke, and Sindhuli (9 case from each district), Sarlahi (8 case), Dolakha, and Pyuthan (7 case from each district), Ilam, Bajura, Rautahat, Arghakhachi, Gulmi, and Myagdi (6 case form each district).
- 28 cases of dengue were reported this week in 2021.



Other diseases

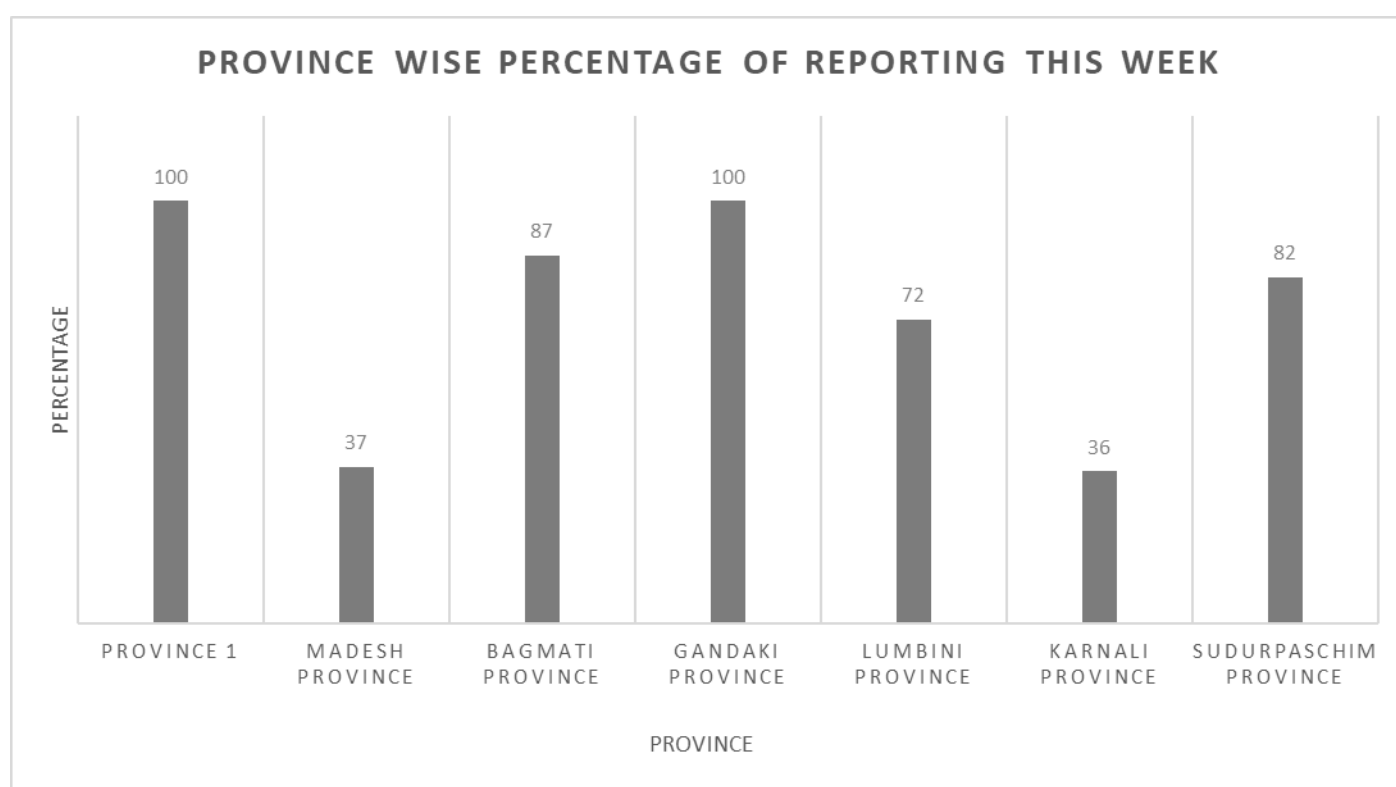
Scrub typhus

- 131 cases of scrub typhus were reported this week. Most of the cases were reported from Achham (22 case), Kanchanpur (20 case), Darchula (15 case), Baitadi (8 case), Bajura (7 case), Nawalparasi East, Palpa and Rupandehi (5 case from each district), Chitawan (4 case).
- 62 case of scrub typhus were reported this week in 2021.

Table: Comparison with previous week by diseases, 2022

Disease	Week 39	Week 38
AGE	115	222
SARI	208	205
Malaria	1	1
Kala-azar	3	4
Dengue	1769	2643
Cholera	1	0

Province wise reporting status:



Acknowledgement: The Epidemiology and Disease Control Division (EDCD) highly acknowledges the contribution from all the sentinel sites, medical recorders, EWARS focal persons, rapid response team members and technical support from WHO and GIZ for preparation of this bulletin.

Note: This bulletin is also available at the ED CD website (please click [here](#)). Other information can also be accessed at the website www.edcd.gov.np. Thank you.



**Government of Nepal
Ministry of Health and Population
Department of Health Services
Epidemiology and Disease Control Division
Kathmandu, Nepal**