

Early Warning and Reporting System (EWARS)

Weekly Bulletin

(40th Epidemiological Week)

14 October, 2018



Government of Nepal
Ministry of Health and Population
Department of Health Services
Epidemiology and Disease Control Division
Kathmandu, Nepal
ewarsedcd@gmail.com

This bulletin includes the updates from the Early Warning and Reporting System (EWARS). It includes data since January 2018 till date, including comparison of same period during last year.

The Early Warning and Reporting System (EWARS)

Highlights

Dengue: Five cases of Dengue are reported this week, one each from Rupandehi, Dhading, Saptari, Mahottari, and Palpa.

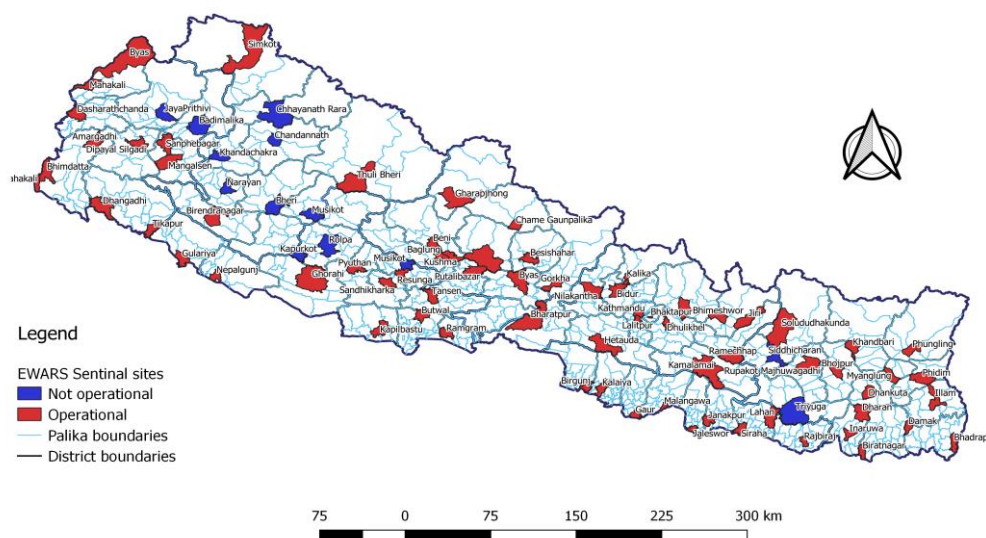
Scrub typhus: Forty-seven cases of Scrub typhus are reported this week, majority of cases are from Gulmi(7), Rupandehi(6) and Palpa(6).

SARI: One death from SARI is reported this week from United Mission Hospital, Palpa and the deceased was from Parbat district.

The EWARS was established in 1997 to strengthen the flow of information on vector-borne and other outbreak prone infectious diseases from the district to Epidemiology and Disease Control Division (EDCD) and Vector-Borne Disease Research and Training Center (VBDRTC), Hetauda. Rapid Response Teams (RRTs) can be mobilized at short notice to facilitate prompt outbreak response at Central, Regional and District level. RRTs can also support local level health institutions for investigation and outbreak control activities.

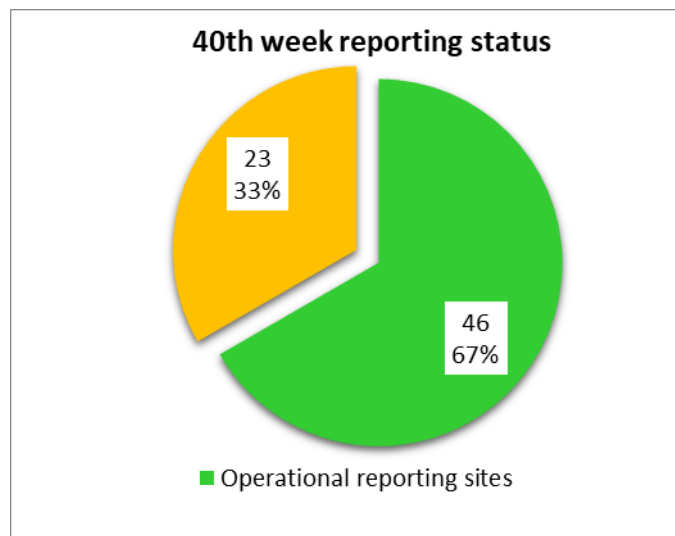
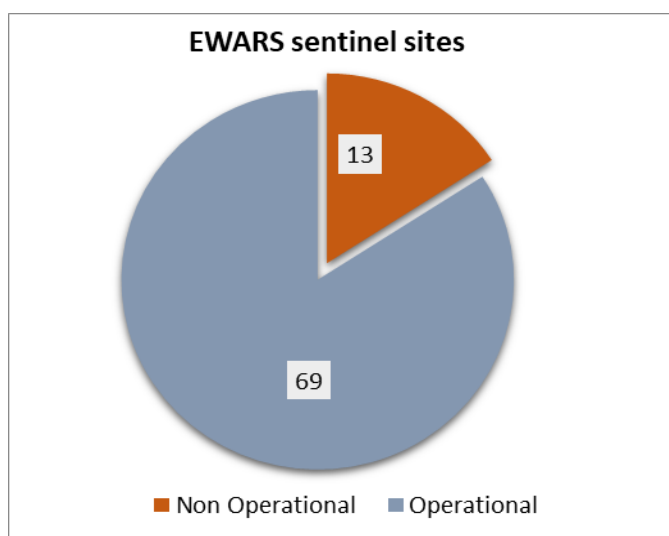
This information system is hospital-based and is currently operational in 69 hospitals (out of 82 sites) throughout Nepal (Figure 1). So far, the EWARS mainly focuses on the **weekly reporting** of number of cases and deaths (including "zero" reports) of six priority diseases/syndromes—Malaria, Kala-azar, Dengue, Acute Gastroenteritis (AGE), Cholera and Severe Acute Respiratory Infection (SARI), and other epidemic potential diseases/syndromes (like enteric fever). It equally focuses on **immediate reporting** (to be reported within 24 hours of diagnosis) of one confirmed case of Cholera, Kala-azar severe and complicated Malaria and one suspect/clinical case of Dengue as well as 5 or more cases of AGE and SARI from the same geographical locality in one-week period.

EWARS Sentinel Sites



Reporting Status

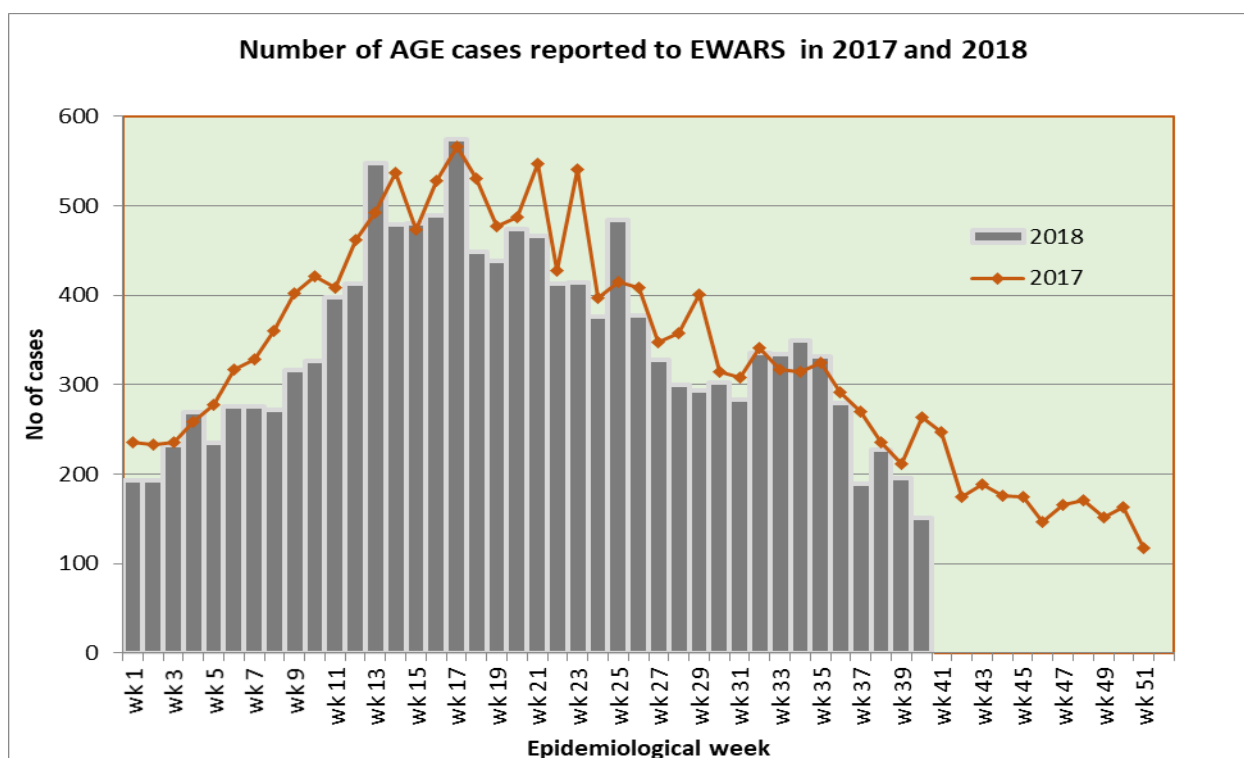
Out of 69 functional EWARS sentinel sites, report was received from 46 sentinel sites (67 percent) whereas 23 sentinel sites did not report in the 40th epidemiological week of 2018. The reporting coverage has increased as compared to previous week.



1.1 Acute Gastro-Enteritis and Cholera

151 cases of AGE are reported in the 40th epidemiological week of 2018. Among 151 cases, the majority of cases are from Surkhet (15 cases), Kapilbastu (11 cases), Bhaktapur (11 cases), and Dhanusha (9 cases). The number of AGE cases reported in the 40th week this year are fewer than those reported in the same week last year (263 cases).

No death from AGE is reported this week. Fourteen deaths from AGE are reported so far this year. Twenty deaths from AGE were reported in 2017.

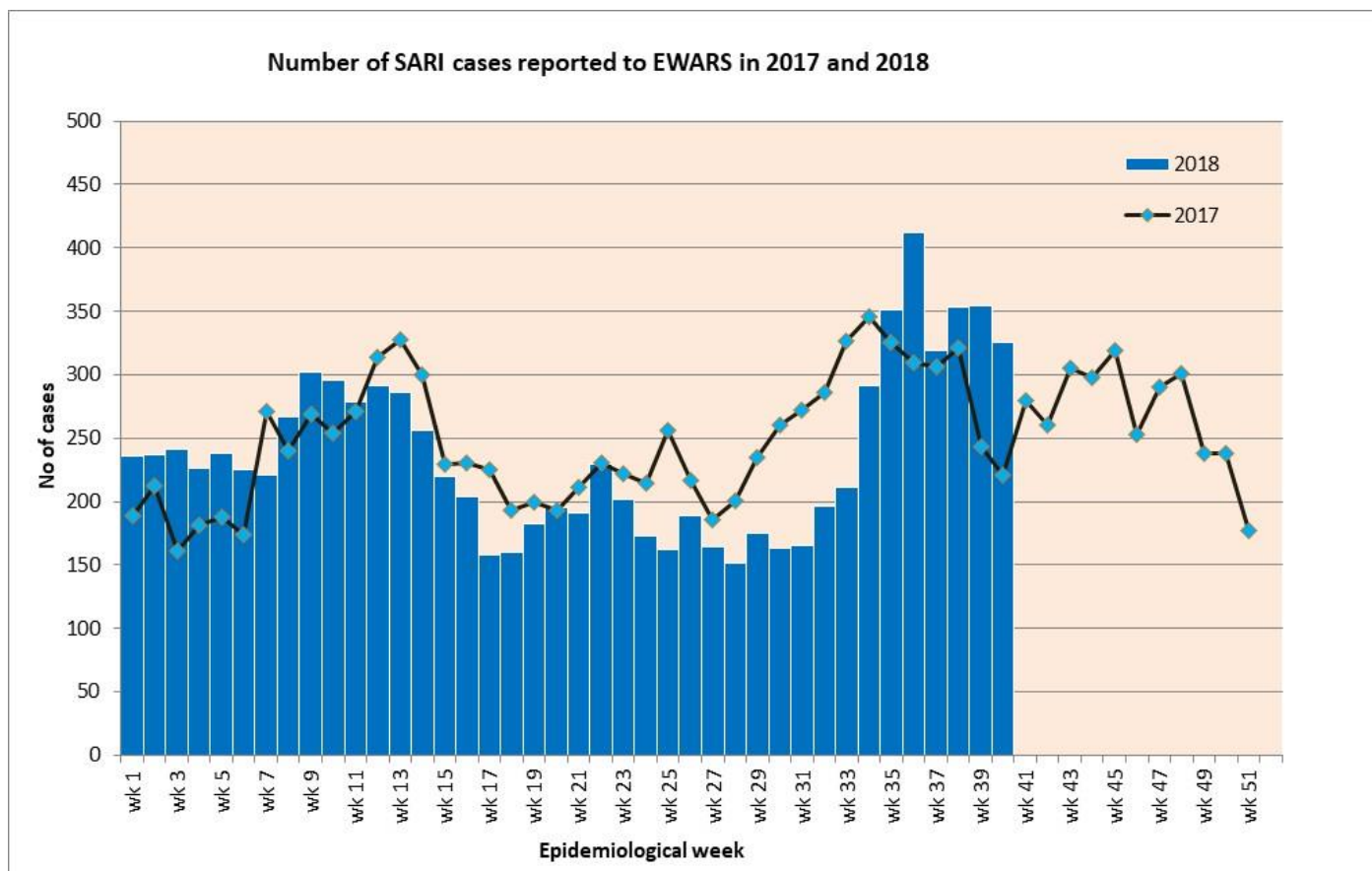


Cholera: A total of 3 cases of Cholera have been reported this year. The samples are confirmed positive by National Public Health Laboratory and the cases are from Nuwakot, Kathmandu and Lalitpur district.

1.2 Severe Acute Respiratory Infection (SARI)

326 cases of SARI are reported in the 40th epidemiological week this year. The cases of SARI reported this week are more than those reported in the same week last year (243 cases). Among 326 reported cases, the majority of cases are from Morang (33 cases), Kailali (30 cases), Palpa (25 cases), Jhapa (22 cases), and Kanchanpur (17 cases).

One death from SARI is reported this week from United Mission Hospital, Palpa and the deceased was from Parbat district. Thirty-three deaths from SARI are reported so far this year. Eighty-two deaths from SARI were reported in 2017.



1.3 Enteric Fever

96 cases of Enteric fever are reported this week. The majority of the cases are from Dhading (47 cases), Lamjung (9 cases), and Sindhupalchok (7 cases) districts. No death from Enteric fever is reported so far this year. Three deaths from Enteric fever were reported in 2017.

1.4 Malaria

No case of Malaria is reported this week. The number of malaria cases reported this week in the previous year was 2.

1.5 Dengue

Five cases of Dengue are reported this week, one each from Rupandehi, Dhading, Saptari, Mahottari, and Palpa. Ninety cases of Dengue including two deaths are reported so far this year. Twelve hundred and one cases of dengue were reported through EWARS in 2017. The number of dengue cases reported in the 40th week this year are less than those reported in the same week last year (56 cases).

1.6 Kala-azar

Two cases of Kala-azar are reported this week, one from Pyuthan and one from Arghakhanchi district. One hundred thirty-six cases of Kala azar including two deaths are reported so far this year. Two hundred twelve cases of Kala-azar were reported through EWARS in 2017.

1.7 Scrub typhus

Fourty-seven cases of Scrub typhus are reported this week, majority of cases are from Gulmi(7), Rupandehi(6) and Palpa(6).

The number of Scrub typhus cases reported in the 40th week this year are less than those reported in the same week last year (23 cases). Four hundred eighty-two cases of Scrub typhus including one death are reported so far this year. Four hundred fifty-one cases of Scrub typhus were reported through EWARS in 2017.

Timeliness of reporting from sentinel sites:

| Code | Sentinel Sites | Timeliness (This Week) | Site Code | Sentinel Sites | Timeliness (This Week) |
|------|-----------------------------|------------------------|-----------|---------------------------|------------------------|
| 101 | Mechi ZH, Jhapa | On Time | 136 | DH, Illam | On Time |
| 102 | Koshi ZH, Morang | On Time | 137 | Dhulikhel H., Kavre | On Time |
| 103 | DH, Sunsari | On Time | 138 | DH, Solukhumbu | On Time |
| 104 | BPKIHS, Dharan | On Time | 139 | DH, Dolpa | No Reporting |
| 105 | DH, Dhankuta | On Time | 140 | DH, Humla | No Reporting |
| 106 | SZH, Saptari | On Time | 201 | L. Comm DH, Lamjung | On Time |
| 107 | RKUP Lahan, Siraha | On Time | 202 | DH, Dhading | On Time |
| 108 | DH, Siraha | No Reporting | 203 | DH, Ramechhap | On Time |
| 109 | JZH, Dhanusha | On Time | 204 | Bhaktapur Hospital | On Time |
| 110 | DH, Rautahat | No Reporting | 205 | Patan Hospital, Lalitpur | On Time |
| 111 | DH, Bara | On Time | 206 | DH, Gorkha | No Reporting |
| 112 | NSRH, Parsa | No Reporting | 207 | DH Trishuli, Nuwakot | No Reporting |
| 113 | DH, Makwanpur | On Time | 208 | Charikot PHCC, Dolakha | On time |
| 114 | Bharatpur Hospital, Chitwan | No Reporting | 209 | Jiri H, Dolakha | On time |
| 115 | Kanti CH, Kathmandu | On Time | 210 | DH, Syangja | No Reporting |
| 116 | STIDH, Kathmandu | On Time | 211 | DH, Tanahun | No Reporting |
| 117 | UMH, Palpa | On Time | 212 | PAHS/WRH, Kaski | On time |
| 118 | PCH, Nawalparasi | No Reporting | 213 | DH, Myagdi | On time |
| 119 | PBH, Kapilbastu | On Time | 214 | DH, Gulmi | On time |
| 120 | LZH, Rupandehi | On Time | 215 | DZH, Baglung | On time |
| 121 | RSRH Dang | On Time | 216 | DH, Parbat | No Reporting |
| 122 | MWRH, Surkhet | On Time | 217 | DH, Arghakhanchi | On Time |
| 123 | BZH, Banke | No Reporting | 218 | DH, Manang | No Reporting |
| 124 | SZH, Kailali | On Time | 219 | DH, Mustang | No Reporting |
| 125 | MZH, Kanchanpur | On Time | 220 | DH, Pyuthan | No Reporting |
| 126 | DH, Doti | No Reporting | 229 | DH, Achham | On Time |
| 127 | DH, Bardiya | On Time | 230 | DH, Baitadi | On Time |
| 128 | DH, Mahottari | On Time | 231 | DH, Darchula | On Time |
| 129 | DH, Dadeldhura | No Reporting | 234 | DH, Taplejung | No Reporting |
| 130 | DH, Rasuwa | No Reporting | 235 | DH, Panchthar | No Reporting |
| 131 | DH, Sankhuwasabha | On Time | 236 | DH, Terhathum | No Reporting |
| 132 | AMDA Hosp., Jhapa | On Time | 237 | DH, Bhojpur | On Time |
| 133 | DH, Chautara | No Reporting | 238 | DH, Khotang | No Reporting |
| 134 | DH, Sarlahi | On Time | 301 | Bayalpata Hosp., Achham | On Time |
| 135 | DH, Sindhuli | On Time | 302 | Tikapur Hospital, Kailali | On Time |

Acknowledgement The Epidemiology and Disease Control Division highly acknowledges the contribution from all the medical recorders, EWARS focal persons, rapid response team members and support from WHO for preparation of this bulletin.

Note: EWARS reporting form (in MS Excel format) is available at EDCCD's official website www.edcd.gov.np . This bulletin is also available at the website.