

Early Warning and Reporting System (EWARS)

Weekly Bulletin

(41st Epidemiological Week)

23 October 2016



Government of Nepal
Ministry of Health
Department of Health Services
Epidemiology and Disease Control Division
Kathmandu, Nepal
ewarsedcd@gmail.com

This bulletin includes the updates from the Early Warning Reporting System (EWARS). It includes data since January 2015 till date, including comparison of same period during last year.

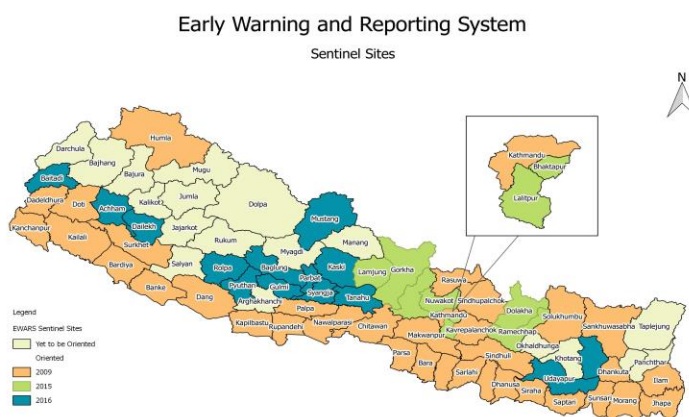
Section 1: The Early Warning and Reporting System (EWARS)

Highlights

- **Dengue:** A total of 329 Dengue cases have been reported from 13 different districts since January 2016 out of which 272 cases from Chitwan, 35 from Jhapa, 2 from Kathmandu (one imported), 3 from Parsa, 2 from Rupandehi, 7 from Kailali, 2 from Kanchanpur and one each from Lalitpur, Dhading, Kavre, Saptari, Kaski and Syangja district. A health team from EDCC has been mobilized on 20 October 2016 for the Dengue outbreak control and management.
- **Scrub Typhus:** A total of 428 cases of Scrub Typhus cases including 9 deaths have been reported from 39 different districts of Nepal Since July, 2016. Out of which 307 cases are from Chitwan District.
- **Cholera:** 160 cholera cases were confirmed by the National Public Health Laboratory so far since 30 June, 29 cases in Kathmandu, 112 cases in Lalitpur, 1 in Bhaktapur, 1 in Kavrepalanchok, 6 in Dhading, 3 in Saptari and 8 from unidentified place.
- **Malaria:** Two cases of Malaria (*Plasmodium vivax*) are reported this week, one each from BPKIHS, Dharan and United Mission Hospital, Palpa and the cases are from Udayapur and Gulmi district respectively. Similarly one case of Malaria (*Plasmodium falciparum*) was reported in 40th week from Sukraraj Tropical and Infectious Disease Hospital, Teku and the case was from Bhaktapur district.
- **Kala-azar:** Three cases of Kala-azar are reported this week, one from Sukraraj Tropical and Infectious Disease Hospital, Teku and two from United Mission Hospital, Palpa and the cases are from Sarlahi and Palpa district.
- One death from AGE is reported this week from United Mission Hospital, Palpa and the case was from Gulmi District.
- One death from SARI is reported this week from Koshi Zonal Hospital, Morang and the case was from Biratnagar Sub Metropolitan

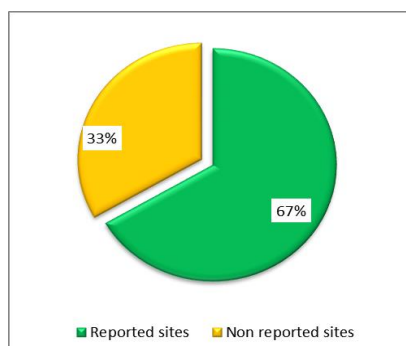
The EWARS was established in 1997 to strengthen the flow of information on vector-borne and other outbreak prone infectious diseases from the district to Epidemiology and Disease Control Division (EDCC) and Vector-Borne Disease Research and Training Center (VDBRTC), Hetauda. Rapid Response Teams (RRTs) can be mobilized at short notice to facilitate prompt outbreak response at Central, Regional and District level. They can also support local level health institutions for investigation and outbreak control activities.

This information system is hospital-based and is currently operational in 60 hospitals (out of 81 sites) throughout Nepal (Figure 1). So far, the EWARS mainly focuses on the **weekly reporting** of number of cases and deaths (including "zero" reports) of six priority diseases/syndromes—Malaria, Kala-azar, Dengue, Acute Gastroenteritis (AGE), Cholera and Severe Acute Respiratory Infection (SARI), and other epidemic potential diseases/syndromes (like enteric fever). It equally focuses on **immediate reporting** (to be reported within 24 hours of diagnosis) of one confirmed case of Cholera, Kala-azar severe and complicated Malaria and one suspect/clinical case of Dengue as well as 5 or more cases of AGE and SARI from the same geographical locality in one week period.



Reporting Status

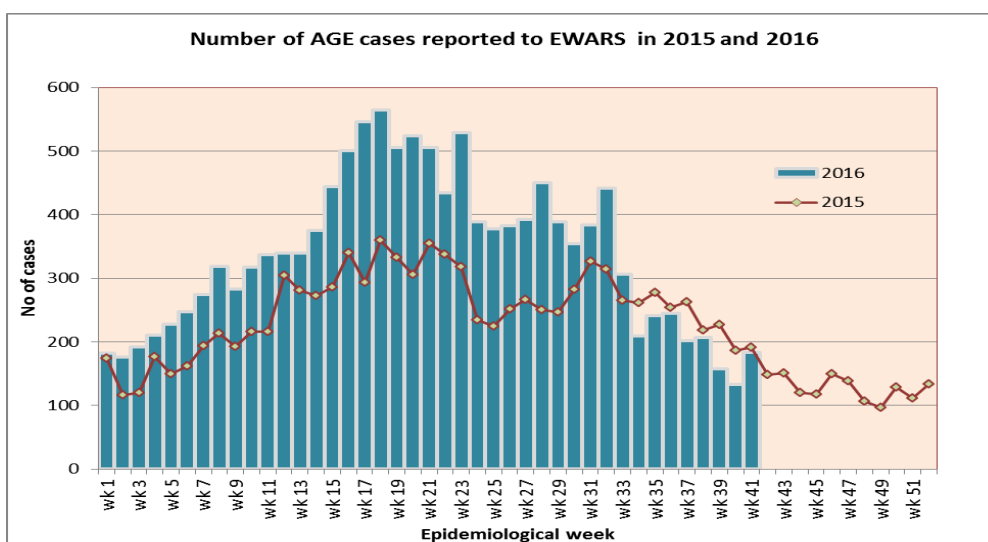
Out of 60 functional EWARS sentinel sites, report was received from 40 sentinel sites (67 percent) whereas 20 sentinel sites did not report in 41st Epidemiological week. The reporting coverage is decreased as compared to the previous week.



1.1 Acute Gastro-Enteritis and Cholera

183 cases of AGE are reported in 41st epidemiological week of 2016. Among 183 cases, the majority of cases are from Kanchanpur (33 cases), Kathmandu (15 cases), Sunsari (14 cases), Dhanusha (12 cases), Syangja (11 cases), Lamjung (10 cases), Bardiya (9 cases), Kaski (7 cases) and Morang (6 cases) and Sarlahi (6 cases) district. The number of AGE cases reported in 41st week this year did not exceed the number of AGE cases reported in the same week last year (192 cases).

One death from AGE is reported this week from United Mission Hospital, Palpa and the case was from Gulmi District. Twelve deaths from AGE are reported so far this year.

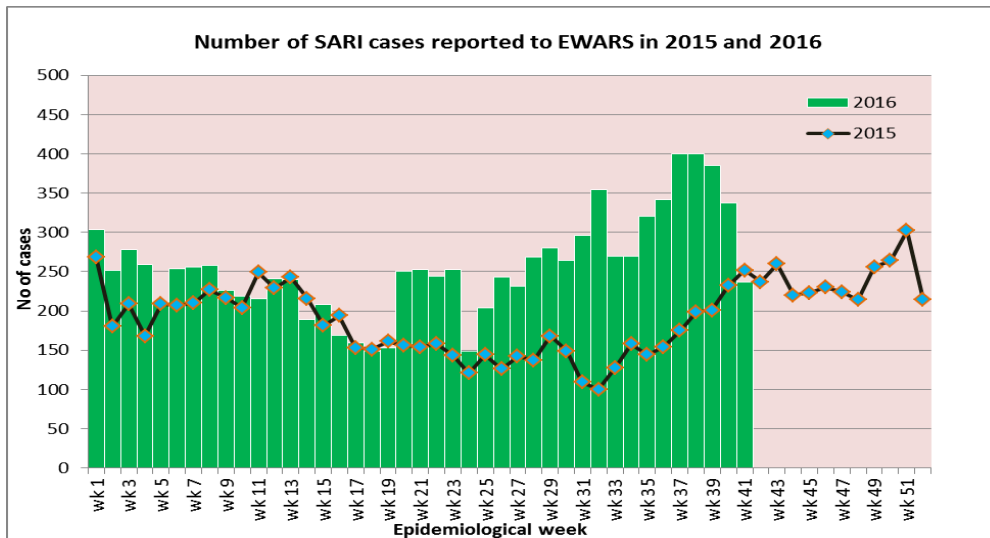


- Cholera:** 160 cholera cases were confirmed by the National Public Health Laboratory so far since 30 June, 29 cases in Kathmandu, 112 cases in Lalitpur, 1 in Bhaktapur, 1 in Kavrepalanchok, 6 in Dhading, 3 in Saptari and 8 from unidentified place. The last case confirmed by NPHL on 21 October 2016, is from Bhumidada, Kavrepalanchok.

1.2 Severe Acute Respiratory Infection (SARI)

237 cases of SARI are reported in 41st epidemiological week of 2016. The cases of SARI reported this week did not exceed the number reported in the same week last year (252 cases). Among 237 cases, the majority of cases are from, Jhapa (35 cases), Morang (31 cases), Palpa (17 cases), Bardiya (16 cases), Saptari (15 cases), Kanchanpur (12 cases), Dhankuta (10 cases), Siraha (8 cases) and Lalitpur (8 cases) district. There is decrease in number of SARI cases in comparison to last week.

One death from SARI is reported this week from Koshi Zonal Hospital, Morang and the case was from Biratnagar Sub Metropolitan. Sixty deaths from SARI are reported so far this year.



1.3 Enteric Fever

55 cases of Enteric fever are reported this week. The majority of cases are from Sindhuli (6 cases), Syangja (6 cases), Palpa (5 cases), Gulmi (5 cases), Lamjung (5 cases), Baglung (4 cases) and Siraha (4 cases) district.

1.4 Malaria

Two cases of Malaria (*Plasmodium vivax*) are reported this week, one each from BPKIHS, Dharan and United Mission Hospital, Palpa and the cases are from Udayapur and Gulmi district respectively. Similarly one case of Malaria (*Plasmodium falciparum*) was reported in 40th week from Sukraraj Tropical and Infectious Disease Hospital, Teku and the case was from Bhaktapur district.

Sixty three cases of Malaria are reported so far this year. Ninety cases of Malaria were reported through EWARS in 2015.

1.5 Dengue

A total of 329 Dengue cases have been reported from 13 Different districts since January 2016 out of which 272 cases from Chitwan, 35 from Jhapa, 2 from Kathmandu(one imported), 3 from Parsa, 2 from Rupandehi, 7 from Kailali, 2 from Kanchanpur and one each from Lalitpur, Dhading, Kavre, Saptari, Kaski and Syangja district. A health team from EDCD has been mobilized on 20 October 2016 for the Dengue outbreak control and management (mosquito larva search and destroy and to orient different stake holders and journalists from Ratnanagar and Kairini Municipalities).

1.6 Kala-azar

Three cases of Kala-azar are reported this week, one from Sukraraj Tropical and Infectious Disease Hospital, Teku and two from United Mission Hospital, Palpa and the cases are from Sarlahi and Palpa district. Similarly two cases of Kala-azar were reported in 40th week from Janakpur Zonal Hospital, Dhanusha and the cases were from Mahottari and Sarlahi district.

Timeliness & completeness of reporting from sentinel sites:

Site Code	Sentinel Sites	Timeliness (this week)	Completeness (%)	Site code	Sentinel Sites	Timeliness (%)	Completeness (%)
101	Mechi ZH, Jhapa	On time	100	130	DH, Rasuwa	No reporting	65
102	Koshi ZH, Morang	On time	100	131	DH, Sankhuwasabha	No reporting	0
103	DH, Sunsari	On time	100	132	AMDA Hosp., Jhapa	On time	100
104	BPKIHS, Dharan	On time	100	133	DH, Chautara	On time	100
105	DH, Dhankuta	On time	100	134	DH, Sarlahi	On time	100
106	SZH, Saptari	On time	100	135	DH, Sindhuli	On time	100
107	RKUP Lahan, Siraha	On time	100	136	DH, Illam	On time	100
108	DH, Siraha	On time	100	137	Dhulikhel H., Kavre	On time	97
109	JZH, Dhanusha	On time	100	138	DH, Solukhumbu	No reporting	73
110	DH, Rautahat	On time	86	139	DH, Dolpa	No reporting	0
111	DH, Bara	No reporting	0	140	DH, Humla	No reporting	0
112	NSRH, Parsa	No reporting	89	201	Lamjung Comm DH, Lamjung	On time	100
113	DH, Makawanpur	On time	100	202	DH, Dhading	No reporting	95
114	NZH, Chitwan	On time	100	203	DH, Ramechhap	On time	100
115	Kanti CH, Kathmandu	On time	90	204	Bhaktapur Hospital	On time	56
116	STH, Kathmandu	On time	100	205	Patan Hospital, Lalitpur	On time	86
117	UMH, Palpa	On time	100	206	DH, Gorkha	On time	65
118	PCH, Nawalparasi	No reporting	92	207	DH Trishuli, Nuwakot	No reporting	5
119	PBH, Kapilvastu	No reporting	92	208	Charikot PHCC, Dolakha	On time	90
120	LZH, Rupandehi	No reporting	92	209	Jiri H, Dolakha	On time	90
121	RSRH Dang	No reporting	97	210	DH, Syangja	On time	100
122	MWRH, Surkhet	No reporting	87	211	DH, Tanahun	No reporting	95
123	BZH, Banke	No reporting	0	212	WRH, Kaski	On time	100
124	SZH, Kailali	No reporting	53	214	DH, Gulmi	No reporting	92
125	MZH, Kanchanpur	On time	100	215	DZH, Baglung	On time	100
126	DH, Doti	On time	86	219	DH, Mustang	No reporting	95
127	DH, Bardiya	On time	100	220	DH, Pyuthan	On time	100
128	DH, Mahottari	On time	100	221	DH, Rolpa	No reporting	34
129	DH, Dadeldhura	No reporting	0	229	DH, Achham	On time	92
				230	DH, Baitadi	On time	100
				237	DH, Bhojpur	On time	100
				240	DH, Udaypur	On time	95

	Excellent (>80)
	Satisfactory (50-79)
	Bad (<50)

Acknowledgement

The Epidemiology and Disease Control Division highly acknowledges the contribution from all the medical recorders, EWARS focal persons, rapid response team members and support from WHO and NHSSP for preparation of this bulletin.

Note: EWARS reporting form (in MS Excel format) is available at EDCCD's official website www.edccd.gov.np. This bulletin is also available at the website.