

# Early Warning and Reporting System (EWARS)- Weekly Bulletin: Nepal

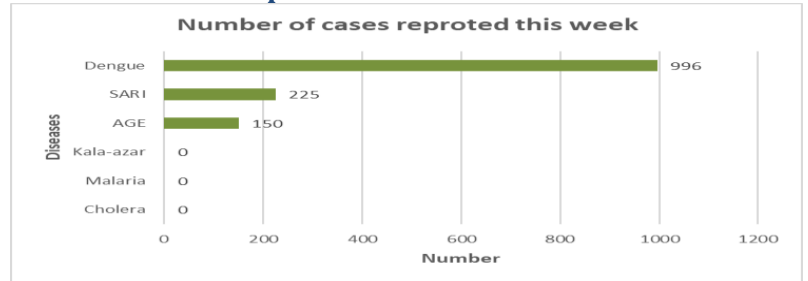
## 44<sup>th</sup> Epidemiological Week, 2022

### 13<sup>th</sup> November, 2022

#### Highlights

- 1000806 cases of Coronavirus disease (COVID-19) have been confirmed in Nepal, of which 988273 cases have been recovered so far.
- Of the reported cases, Dengue is the leading cause of morbidity in week 44.

#### Number of cases reported for each disease this week

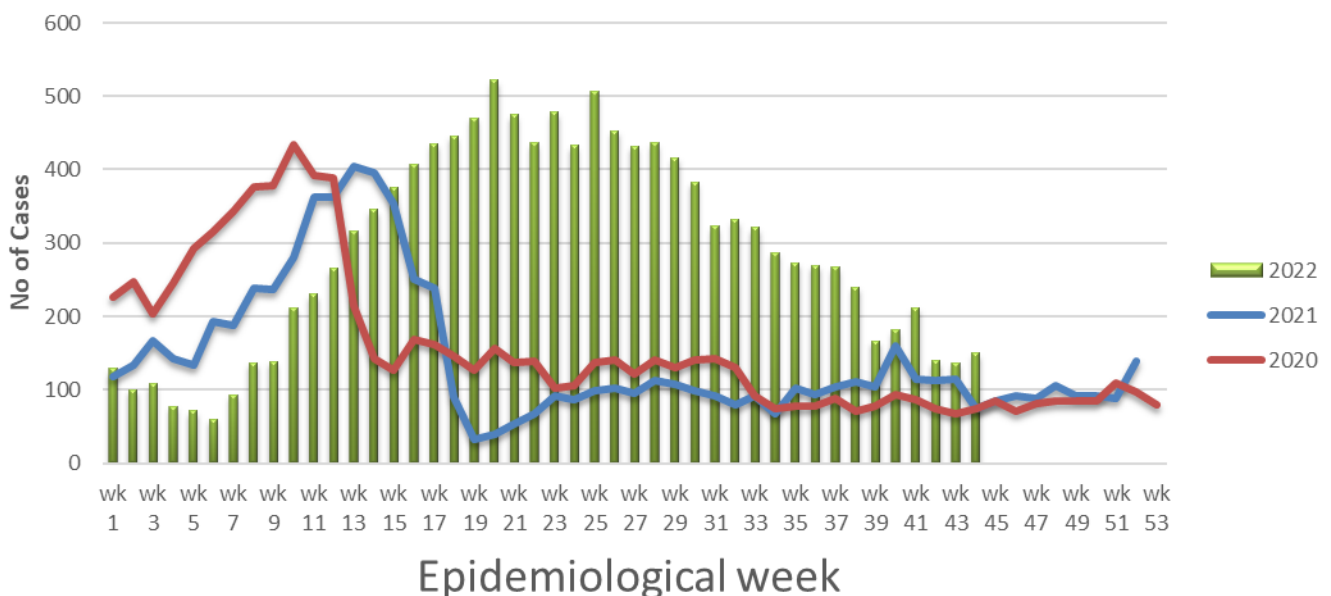


**Note:** This bulletin includes data since January 2021 till date, including comparison of the same period last two year. Since, May 2019, 36 new sentinel sites (including public hospitals, private hospitals, and medical colleges) were added and were gradually oriented and started reporting, thus increasing the number of reporting sites. The current number of sentinel sites is 118.

#### 1. Acute Gastro-Enteritis (AGE)

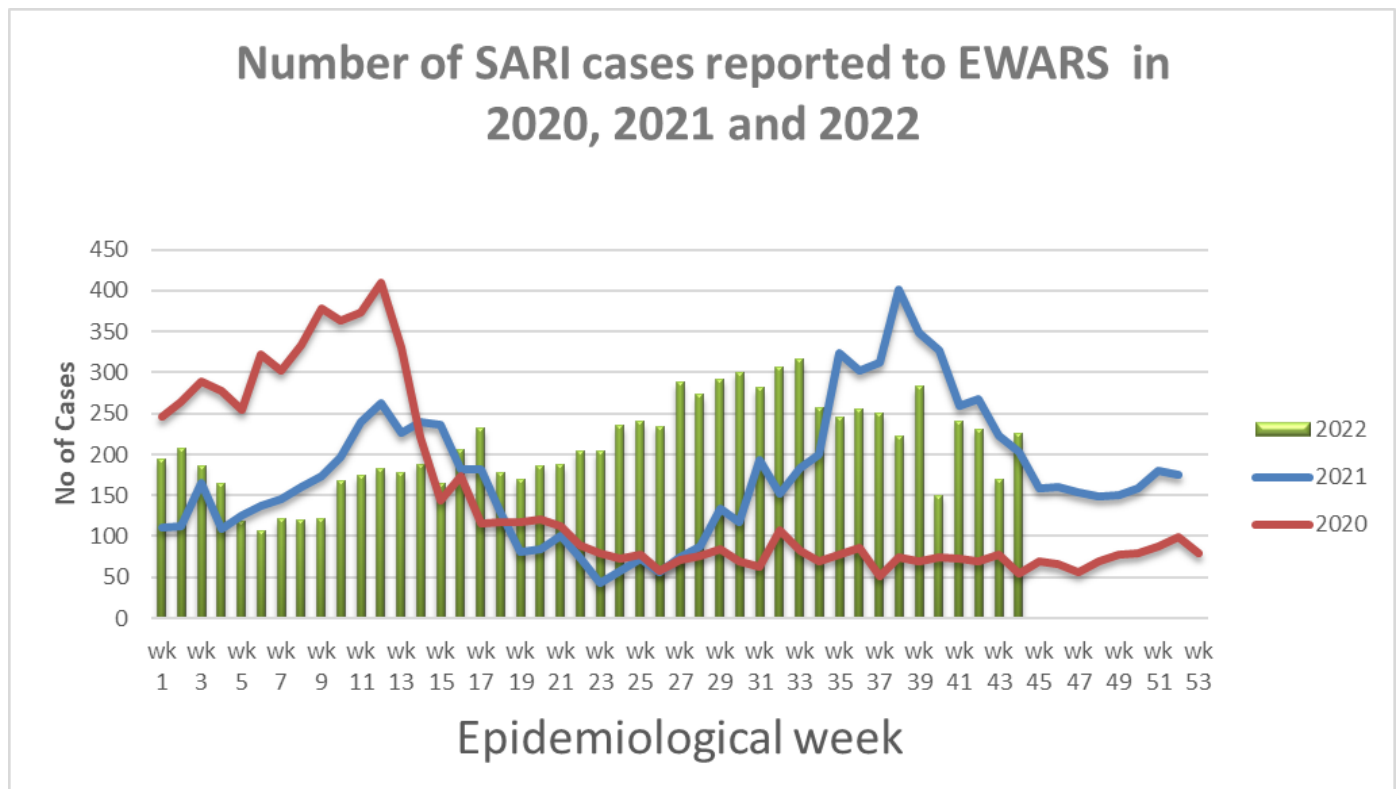
- 150 cases of AGE were reported this week. Most of these cases were reported from Parsa (22 case), Kathmandu (16 case), Mahottari, and Bara (9 case from each district), Kapilbastu, and Bardiya (8 case from each district), Saptari (6 case), rukum West, Sunsari, and Ilam (5 case from each district).
- 76 cases of AGE were reported this week in 2021.

#### Number of AGE cases reported to EWARS in 2020, 2021 and 2022



## 2. Severe Acute Respiratory Infection (SARI)

- 225 cases of SARI were reported this week. Most of these cases were reported from Jhapa, and Rupandehi (20 case from each district), Morang (16 case), Kathmandu, and Kailali (13 case from each district), Parsa (10 case), Kapilbastu (9 case), Ropla, Bajura, and Bardiya (7 case from each district), Kanchanpur (6 case from each district), Bara, Pyuthan, and Nuwakot (5 case from each district).
- 206 cases of SARI were reported this week in 2021.



## 3. Malaria

- Zero case of malaria was reported this week.
- Two cases of malaria were reported this week in 2021.

## 4. Kala-azar

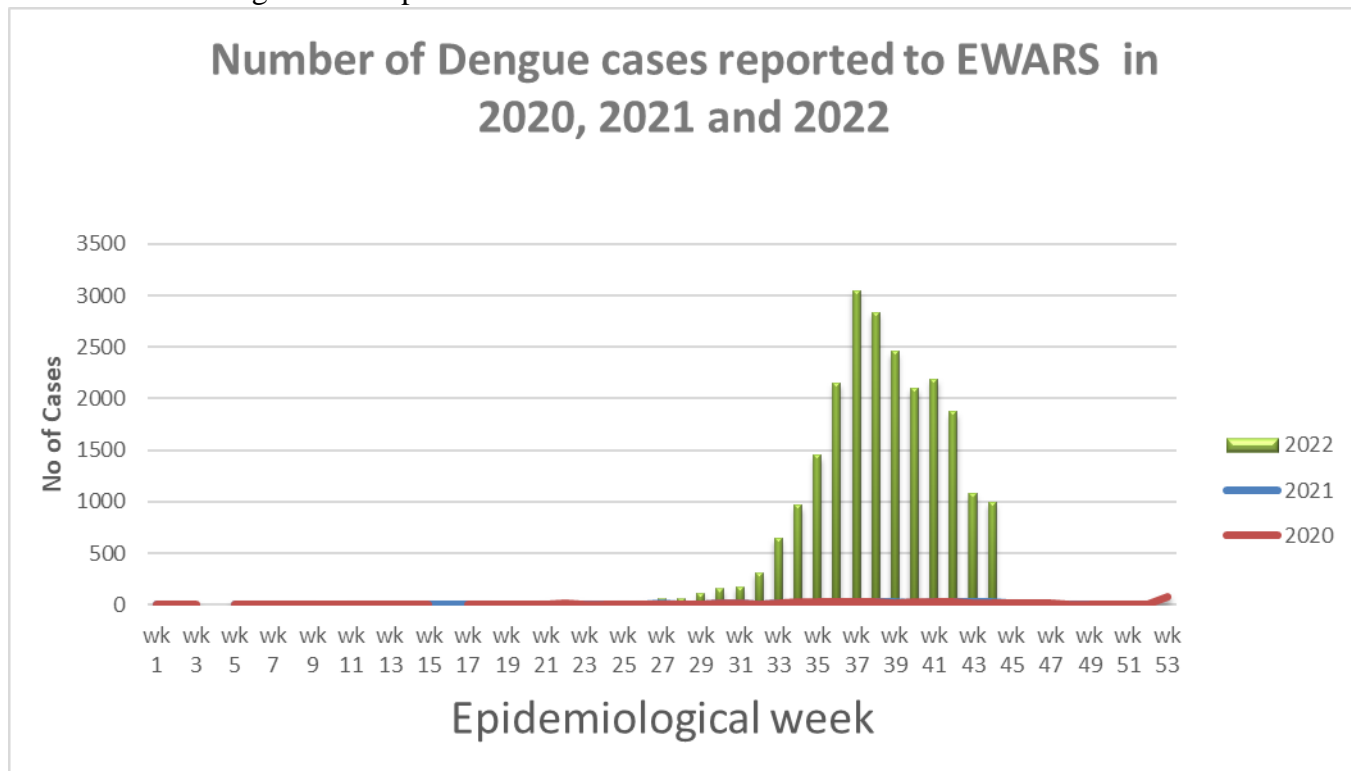
- Zero cases of kala-azar were reported this week.
- 15 cases of kala-azar were reported this week in 2021.

## 5. Cholera

- Zero case of Cholera was reported this week.
- One case of Cholera was reported this week in 2021.

## 6. Dengue

- 996 cases of dengue were reported this week. Most of these cases were reported from Kathmandu (320 case), Dhading (136 case), Chitawan (54 case), Tanahu (37 case), Lalitpur (35 case), Rupandehi (30 case), Bara (25 case), Makwanpur (24 case), Kaski (22 case), Bhaktapur (17 case), Gorkha (16 case), Dang (15 case), Baglung (14 case), Sunsari, and Nawalparasi East (13 case from each district), Parbat, and Kavrepalanchok (12 case from each district), Sankhuwasabha (11 case), Bardiya (10 case), Kailali, Parsa, Sindhuli, and Ilam (9 case from each district), Kapilbastu, and Morang (8 case from each district), Rautahat, Lamjung, and Sarlahi (7 case from each district), Sidhupalchok, Jhapa, and Nawalparasi West (6 case from each district), Bhojpur, Dhankuta, Salyan, Nuwakot, Baitadi, Arghakhanchi, and Panchthar (5 case from each district).
- 27 cases of dengue were reported this week in 2021.



## Other diseases

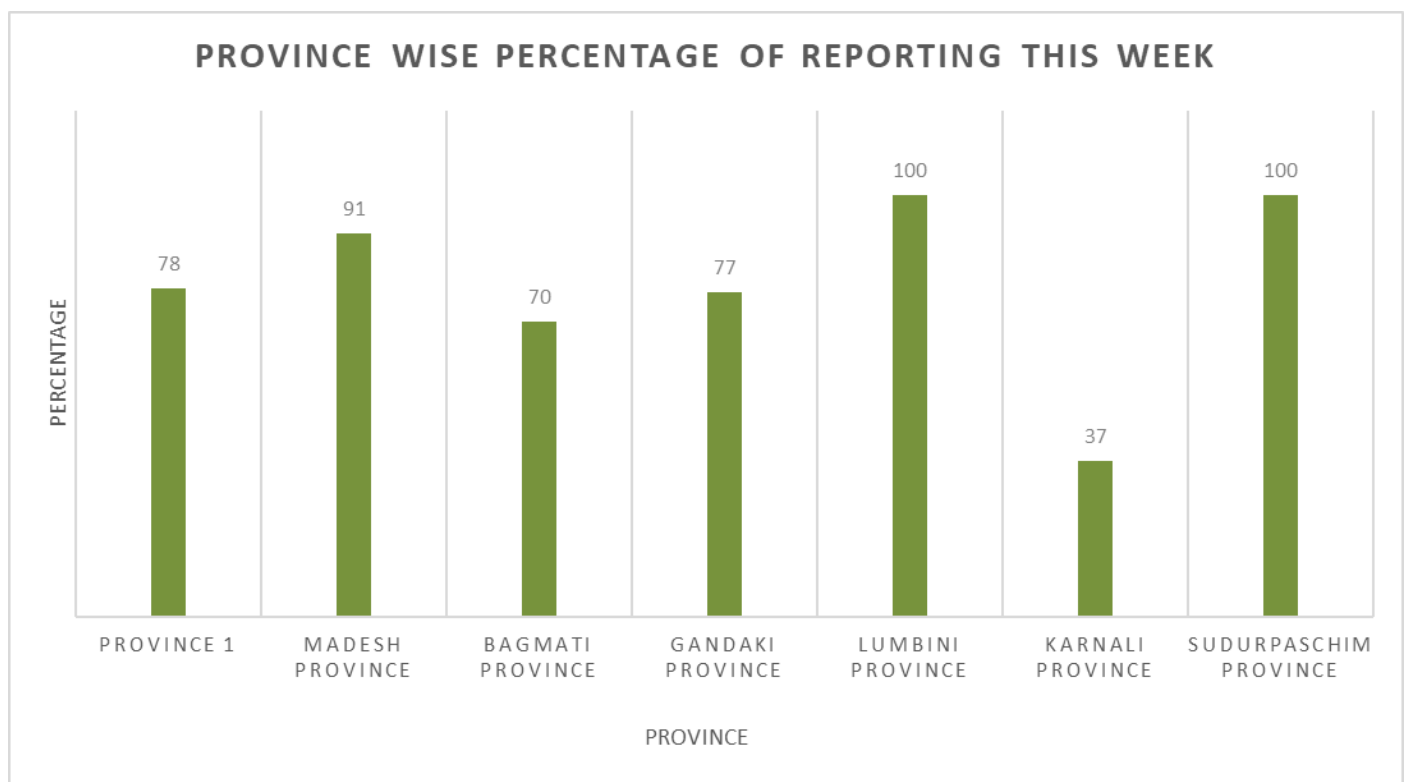
### Scrub typhus

- 72 cases of scrub typhus were reported this week. Most of the cases were reported from Bardiya (13 case), Kailali (12 case), Bajura, Baitadi, Achham, Rupandehi, and Kanchanpur (6 case from each district), Darchula, and Chitawan (5 case from each district).
- 72 cases of scrub typhus were reported this week in 2021.

**Table: Comparison with previous week by diseases, 2022**

Disease	Week 44	Week 43
AGE	150	137
SARI	225	170
Malaria	0	1
Kala-azar	0	2
Dengue	996	1075
Cholera	0	0

**Province wise reporting status:**



**Acknowledgement:** The Epidemiology and Disease Control Division (EDCD) highly acknowledges the contribution from all the sentinel sites, medical recorders, EWARS focal persons, rapid response team members and technical support from WHO and GIZ for preparation of this bulletin.

**Note:** This bulletin is also available at the EDCCD website (please click [here](#)). Other information can also be accessed at the website [www.edcd.gov.np](http://www.edcd.gov.np). Thank you.



**Government of Nepal**  
**Ministry of Health and Population**  
**Department of Health Services**  
**Epidemiology and Disease Control Division**  
**Kathmandu, Nepal**