

**Early Warning and Reporting System (EWARS)**

# **Weekly Bulletin**

**(47<sup>th</sup> Epidemiological Week)**

**02 December, 2018**



**Government of Nepal**  
**Ministry of Health and Population**  
**Department of Health Services**  
**Epidemiology and Disease Control Division**  
**Kathmandu, Nepal**  
[ewarsedcd@gmail.com](mailto:ewarsedcd@gmail.com)

This bulletin includes the updates from the Early Warning and Reporting System (EWARS). It includes data since January 2018 till date, including comparison of same period during last year.

## The Early Warning and Reporting System (EWARS)

### Highlights

**SARI:** One death from SARI is reported this week from Bhojpur municipality, Bhojpur. A total of 131 cases of SARI are reported this week.

**Malaria:** Four cases of Malaria are reported this week (one each from Achham, Kailali, Palpa and Siraha).

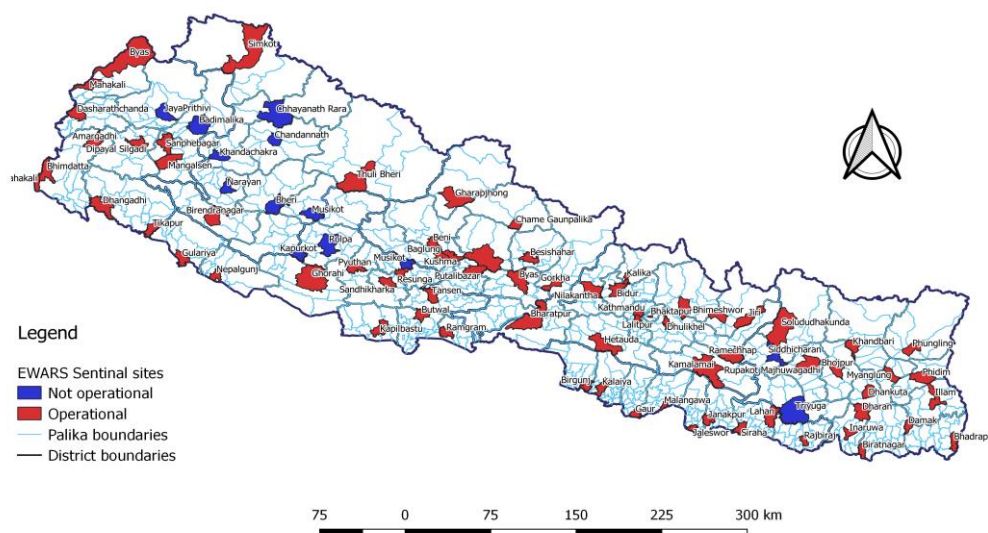
**Dengue:** Four cases of Dengue are reported this week (two from Banke and two from Palpa).

**Kala-azar:** Four cases of Kala-azar are reported this week (one each from Humla, Mahottari, Morang and Okhaldhunga).

The EWARS was established in 1997 to strengthen the flow of information on vector-borne and other outbreak prone infectious diseases from the district to Epidemiology and Disease Control Division (EDCD) and Vector-Borne Disease Research and Training Center (VBDRTC), Hetauda. Rapid Response Teams (RRTs) can be mobilized at short notice to facilitate prompt outbreak response at Central, Regional and District level. RRTs can also support local level health institutions for investigation and outbreak control activities.

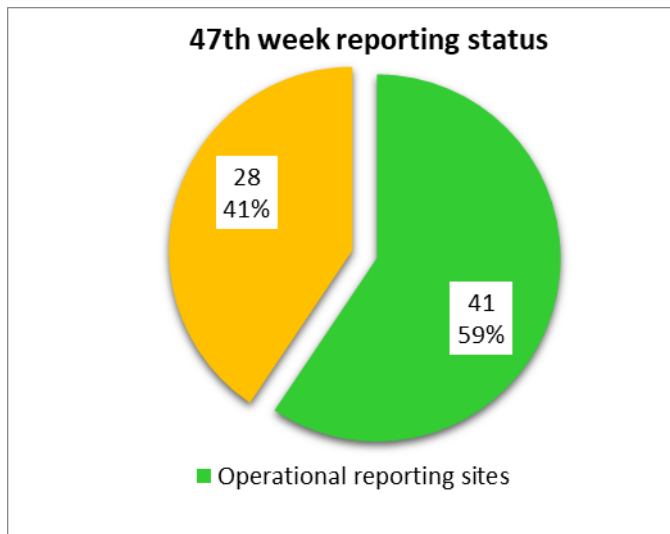
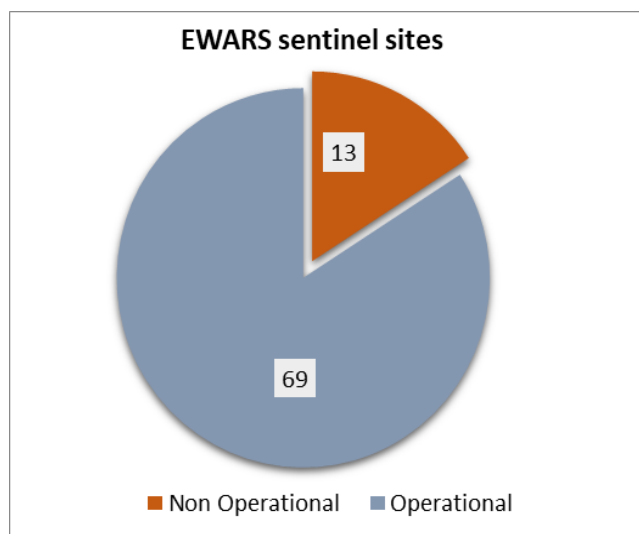
This information system is hospital-based and is currently operational in 69 hospitals (out of 82 sites) throughout Nepal (Figure 1). So far, the EWARS mainly focuses on the **weekly reporting** of number of cases and deaths (including "zero" reports) of six priority diseases/syndromes—Malaria, Kala-azar, Dengue, Acute Gastroenteritis (AGE), Cholera and Severe Acute Respiratory Infection (SARI), and other epidemic potential diseases/syndromes (like enteric fever). It equally focuses on **immediate reporting** (to be reported within 24 hours of diagnosis) of one confirmed case of Cholera, Kala-azar severe and complicated Malaria and one suspect/clinical case of Dengue as well as 5 or more cases of AGE and SARI from the same geographical locality in one-week period.

### EWARS Sentinel Sites



## Reporting Status

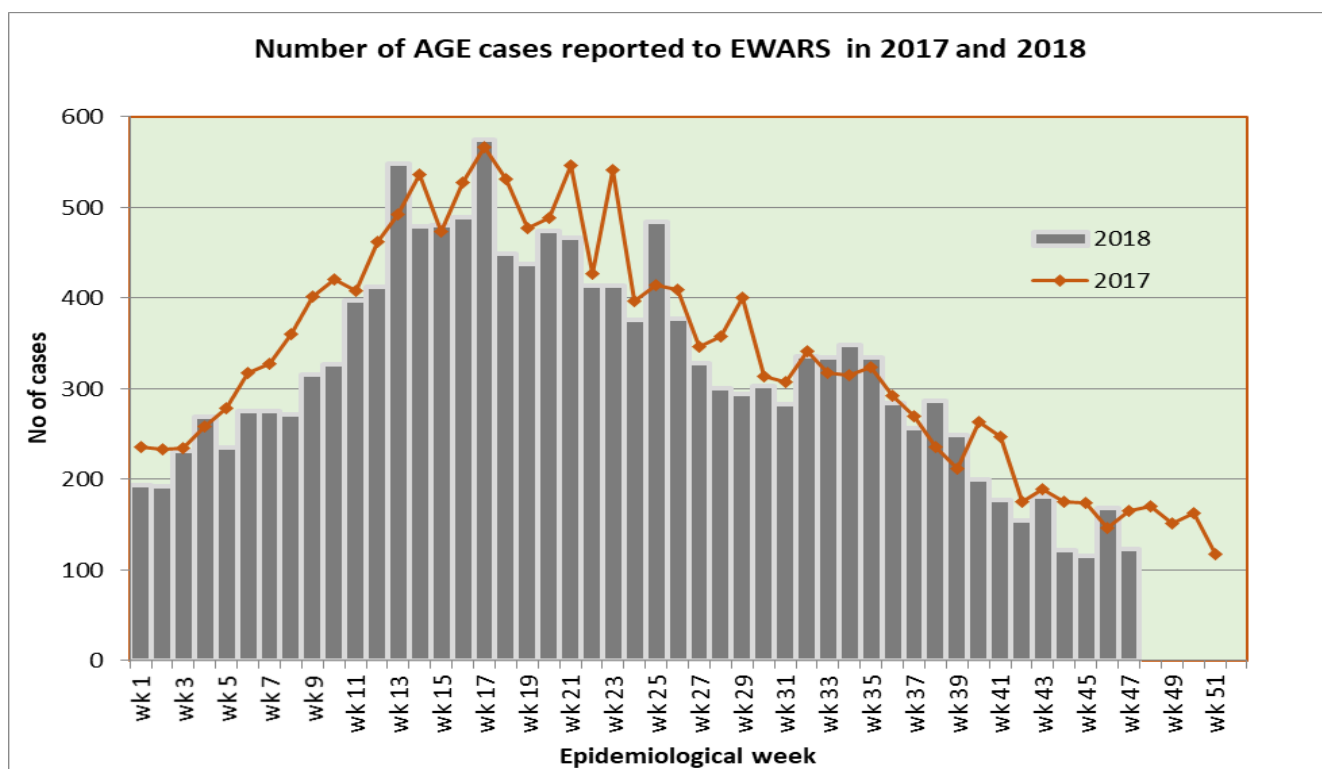
Out of 69 functional EWARS sentinel sites, report was received from 41 sentinel sites (59%) whereas 28 sentinel sites did not report in the 47<sup>th</sup> epidemiological week of 2018. The reporting coverage has increased compared to the last week.



### 1.1 Acute Gastro-Enteritis and Cholera

123 cases of AGE are reported in the 47<sup>th</sup> epidemiological week of 2018. The majority of these cases are from Dhanusha (15 cases), Kapilvastu (13 cases) Achham (10 cases) and Lamjung (10 cases). The number of AGE cases reported in the 47<sup>th</sup> week this year are fewer than those reported in the same week last year (176 cases).

No death from AGE is reported this week. Fifteen deaths from AGE are reported so far this year. Twenty deaths from AGE were reported in 2017.

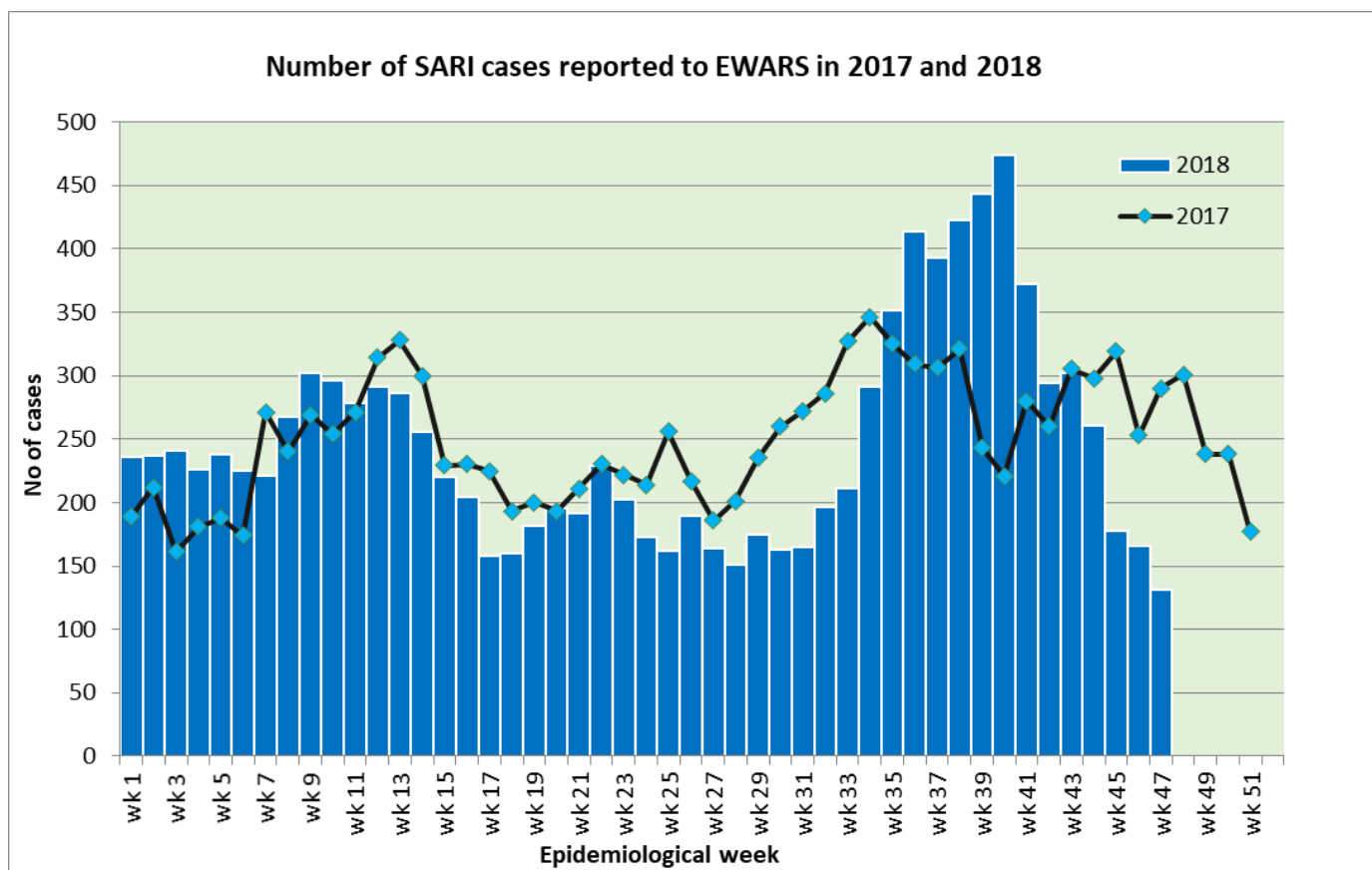


**Cholera:** A total of 3 cases of Cholera have been reported this year. The samples are confirmed positive by National Public Health Laboratory and the cases are from Nuwakot, Kathmandu and Lalitpur district.

## 1.2 Severe Acute Respiratory Infection (SARI)

131 cases of SARI are reported in the 47<sup>th</sup> epidemiological week this year. The majority of these cases are from Saptari (21 cases), Morang (16 cases) and Kailali (11 cases). The cases of SARI reported this week are fewer compared to those from the same week last year (320 cases).

One death from SARI is reported this week from Bhojpur municipality, Bhojpur. Forty-two deaths from SARI are reported so far this year. Eighty-two deaths from SARI were reported in 2017.



## 1.3 Enteric Fever

32 cases of Enteric fever are reported this week. The majority of the cases are from Lamjung (12 cases), Kaski (6 cases) and Morang (3 cases). No death from Enteric fever is reported so far this year. Three deaths from Enteric fever were reported in 2017.

## 1.4 Malaria

Four cases of Malaria are reported this week (one each from Achham, Kailali, Palpa and Siraha). Three cases of Malaria were reported this week in 2017.

## 1.5 Dengue

Four cases of Dengue are reported this week (two from Banke and two from Palpa).

One hundred ninety-five cases of Dengue including two deaths are reported so far this year. Twelve hundred and one cases of Dengue were reported through EWARS in 2017.

## 1.6 Kala-azar

Four cases of Kala-azar are reported this week (one each from Humla, Mahottari, Morang and Okhaldhunga).

One hundred seventy-one cases of Kala-azar including two deaths are reported so far this year. Two hundred twelve cases of Kala-azar were reported through EWARS in 2017.

## 1.7 Scrub typhus

15 cases of Scrub typhus are reported this week, and the majority of the cases are from Rupandehi (3 cases), Kailali (3 cases) and Bardiya (2 cases).

The number of Scrub typhus cases reported this week are fewer compared to the same week last year (7 cases). Seven hundred forty-eight cases of Scrub typhus including two deaths are reported so far this year. Four hundred fifty-one cases of Scrub typhus were reported through EWARS in 2017.

### Timeliness and completeness of reporting from sentinel sites:

Code	Sentinel Sites	Timeliness (This Week)	Completeness (%)	Site Code	Sentinel Sites	Timeliness (This Week)	Completeness (%)
101	Mechi ZH, Jhapa	No reporting	98	136	DH, Illam	No reporting	98
102	Koshi ZH, Morang	On time	100	137	Dhulikhel H., Kavre	On time	96
103	DH, Sunsari	No reporting	98	138	DH, Solukhumbu	On time	81
104	BPKIHS, Dharan	No reporting	98	139	DH, Dolpa	No reporting	0
105	DH, Dhankuta	On time	100	140	DH, Humla	No reporting	0
106	SZH, Saptari	On time	72	201	L. Comm DH, Lamjung	On time	100
107	RKUP Lahan, Siraha	On time	100	202	DH, Dhading	On time	81
108	DH, Siraha	On time	98	203	DH, Ramechhap	On time	100
109	JZH, Dhanusha	On time	98	204	Bhaktapur Hospital	No reporting	23
110	DH, Rautahat	No reporting	70	205	Patan Hospital, Lalitpur	On time	100
111	DH, Bara	On time	100	206	DH, Gorkha	No reporting	96
112	NSRH, Parsa	No reporting	96	207	DH Trishuli, Nuwakot	On time	6
113	DH, Makwanpur	No reporting	96	208	Charikot PHCC, Dolakha	On time	100
114	Bharatpur Hospital, Chitwan	On time	100	209	Jiri H, Dolakha	No reporting	96
115	Kanti CH, Kathmandu	On time	100	210	DH, Syangja	No reporting	98
116	STIDH, Kathmandu	On time	98	211	DH, Tanahun	No reporting	77
117	UMH, Palpa	On time	100	212	PAHS/WRH, Kaski	On time	100
118	PCH, Nawalparasi	On time	96	213	DH, Myagdi	On time	74
119	PBH, Kapilbastu	On time	85	214	DH, Gulmi	No reporting	81
120	LZH, Rupandehi	On time	100	215	DZH, Baglung	No reporting	96
121	RSRH Dang	On time	98	216	DH, Parbat	On time	59
122	MWRH, Surkhet	On time	100	217	DH, Arghakhanchi	On time	63

123	BZH, Banke	On time	79	218	DH, Manang	On time	74
124	SZH, Kailali	On time	64	219	DH, Mustang	On time	45
125	MZH, Kanchanpur	On time	100	220	DH, Pyuthan	No reporting	55
126	DH, Doti	On time	98	229	DH, Achham	No reporting	96
127	DH, Bardiya	On time	96	230	DH, Baitadi	No reporting	83
128	DH, Mahottari	No reporting	74	231	DH, Darchula	No reporting	27
129	DH, Dadeldhura	No reporting	0	234	DH, Taplejung	No reporting	18
130	DH, Rasuwa	No reporting	83	235	DH, Panchthar	No reporting	96
131	DH, Sankhuwasabha	No reporting	96	236	DH, Terhathum	No reporting	18
132	AMDA Hosp., Jhapa	On time	100	237	DH, Bhojpur	On time	94
133	DH, Chautara	On time	100	238	DH, Khotang	No reporting	40
134	DH, Sarlahi	No reporting	98	301	Bayalpata Hosp., Achham	On time	100
135	DH, Sindhuli	On time	100	302	Tikapur Hospital, Kailali	On time	81
						Excellent (>80)	
						Satisfactory (50-79)	
						Bad(<50)	

**Acknowledgement** The Epidemiology and Disease Control Division highly acknowledges the contribution from all the medical recorders, EWARS focal persons, rapid response team members and support from WHO for preparation of this bulletin.

**Note:** EWARS reporting form (in MS Excel format) is available at EDCCD's official website [www.edccd.gov.np](http://www.edccd.gov.np) . This bulletin is also available at the website.